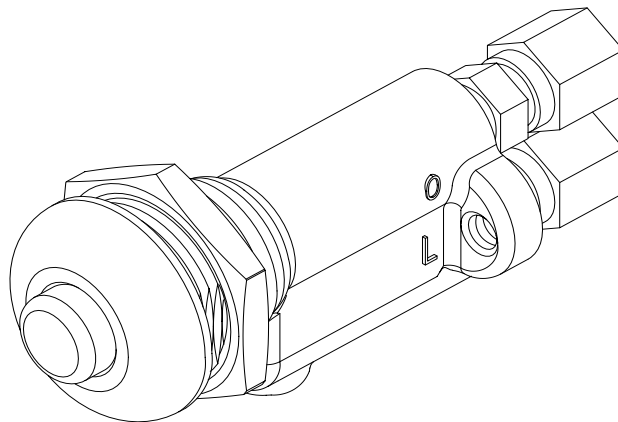




WILLOUGHBY



INSTALLATION INSTRUCTIONS

Flush valve actuator assembly - rear mount

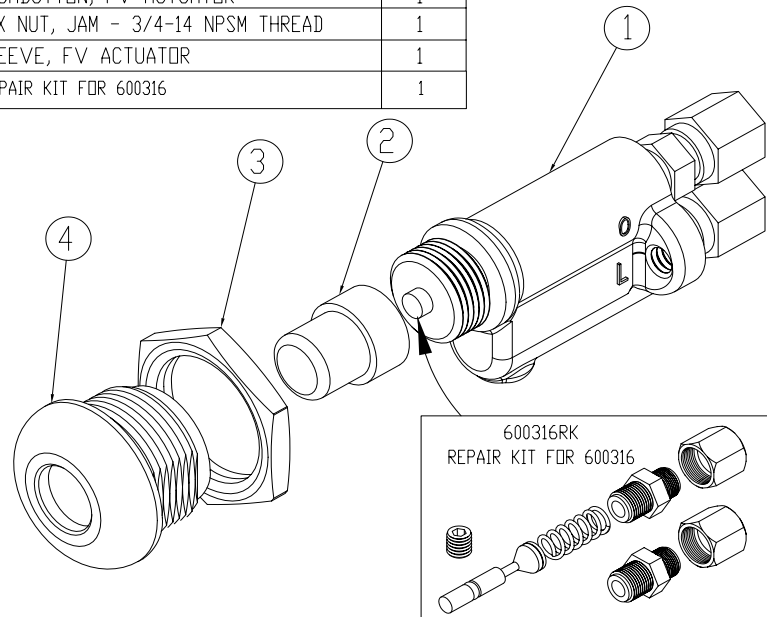
Model Number:
600317PM

Visit our website at <http://www.willoughby-ind.com>
2210 West Morris Street • P.O. Box 21217 • Indianapolis, IN 46221
(317) 638-2381 • Fax: (317) 638-6110 • (800) 428-4065

Rev. 4/2007

600317PM
Flush valve actuator assembly - panel mount

| ITEM NO. | PART NUMBER | DESCRIPTION | QTY. |
|----------|-------------|-----------------------------------|------|
| 1 | 600316 | CASTING ASSY, FV ACTUATOR | 1 |
| 2 | 600063 | PUSHBUTTON, FV ACTUATOR | 1 |
| 3 | 600612N | HEX NUT, JAM - 3/4-14 NPSM THREAD | 1 |
| 4 | 380162 | SLEEVE, FV ACTUATOR | 1 |
| N/A | 600316RK | REPAIR KIT FOR 600316 | 1 |



- 1.) Insert sleeve (4) into specified hole in fixture/panel and secure with locknut (3).
- 2.) Insert pushbutton (2) into sleeve (4).
- 3.) Install casting assembly (1) into sleeve (4) by turning clockwise until fully tight.
- 4.) Insert tubing into fitting nuts on casting assembly (1) and tighten.

Note:

It is not necessary to remove fitting nuts to install tubing. Be sure to insert tubing fully before tightening.

Observe "L" and "O" markings on casting assembly. Mark each tube so that it can be identified and connected to the corresponding fitting on the flush valve body. Failure to complete this step will cause damage to the actuator.

- 5.) Connect tubing to its corresponding fitting (L and O) on the flush valve body, see step 4 notes..

Visit our website at <http://www.willoughby-ind.com>

2210 West Morris Street • P.O. Box 21217 • Indianapolis, IN 46221

(317) 638-2381 • Fax: (317) 638-6110 • (800) 428-4065



Willoughby Warranty

Willoughby Industries, Inc. warrants to commercial and institutional purchasers only that each unit will be free from defects in workmanship and materials under normal use and service for one year from date of shipment.

This warranty does not cover installation or any other labor charges and does not apply to any components damaged by accident, abuse, improper installation or improper maintenance. This warranty does not cover any installation that did not comply with national, state and local building, plumbing, or electrical codes. The warranty is limited to replacing or repairing at Willoughby's option, transportation charges prepaid by the purchaser, component or part which upon our inspection shall be deemed as defective within the limitations of this warranty. The replacement or repair of defective units as stated in this warranty shall constitute the sole remedy of the purchaser and the sole liability of Willoughby Industries, Inc. Willoughby Industries, Inc. shall not otherwise be liable under any indirect damages caused by defects in the repair or replacement thereof.

This warranty only extends to commercial and institutional purchasers and does not extend to any others, including consumer customers of commercial institutional purchasers. This warranty is in lieu of all other warranties, expressed or implied, including implied warranty of merchantability or fitness for a particular purpose or otherwise.