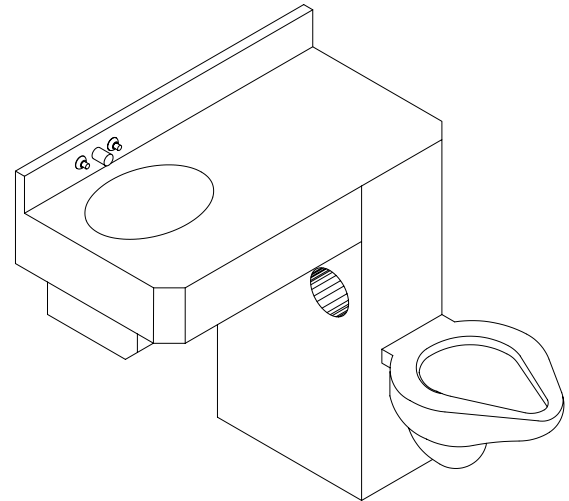




## 3696-FA Series Front Access Combination Units Handicap (ADA Compliant) 36" Wide, (90° Chase)

✓	MODEL NUMBER	FIXTURE BASE LOCATION	TOILET/LAV OUTLETS	TOILET SEAT LOCATION
	ECW-3696-L-ON-HC-FA	ON-FLOOR	WALL/WALL	LEFT
	ECW-3696-R-ON-HC-FA	ON-FLOOR	WALL/WALL	RIGHT
	ECF-3696-L-ON-HC-FA	ON-FLOOR	FLOOR/WALL	LEFT
	ECF-3696-R-ON-HC-FA	ON-FLOOR	FLOOR/WALL	RIGHT



### Recommended Specifications

Front access combination lavatory/toilet shall be Willoughby Model No. **EC \_\_\_-3696-\_\_\_-ON-HC-FA** (select from table above).

Fixture shall be fabricated from 14 gauge, type 304 stainless steel. The construction shall be all-welded, with exposed stainless surfaces polished to a #4 satin finish.

Standard toilet shall include: elongated toilet bowl with contoured seat, integral crevice-free self-draining flushing rim with positive afterfill and fully enclosed 3" O.D. trap which shall maintain a minimum 3 1/2" seal and pass a 2 5/8" ball. Toilet shall be blowout type which requires 25 psi minimum flushing pressure. Integral hydraulic flush valve shall be factory installed.

Standard lavatory shall include: oval shaped, 13" x 9 1/2" x 6" deep, with Willoughby all stainless steel single hole filler/bubbler spout, fast drain with air vent, slip joint brass union p-trap (1 1/2"NPT), factory installed (PM2) dual temperature pneumatic metering valve assembly, and self draining soap dishes.

Removable access panels, attached with security screws, shall provide access to fixture interior.

Fixture shall with stand loads up to 2,000 lbs. with no measurable deflection and loads up to 5,000 lbs. with no permanent damage.

Anchoring shall be from the front, anchoring holes provided. Anchoring hardware by others. Unit requires no chase area for installation and maintenance.

*On back to back fixture installations do not use standard cross type waste fitting: cross flow may result due to blow-out jet action. Use sanitary or offset type waste fittings.*

Note: for 1.6 gallon flush, unit will pass a 2 1/8" ball.

Visit our website at <http://www.willoughby-ind.com>

2210 West Morris Street • P.O. Box 21217 • Indianapolis, IN 46221

(317) 638-2381 • Fax: (317) 638-6110 • (800) 428-4065

## MODEL NUMBER AND OPTIONS:

### 1.) Toilet Waste Location:

- ECW Wall
- ECF Floor

### 2.) Base Model Number:

- 3696-FA 36" Front Access Combination

### 3.) Toilet Orientation:

- L Offset Left
- R Offset Right

### 4.) Fixture Mounting:

- ON On-Floor

### 5.) Bubblers Selection:

- BP Penal Bubbler
- BC Code Bubbler
- FL Lav/Filler
- BPH Anti-Suicide Bublter

### 6.) Valve Selection:

- NV No Valve
- PS1 Single Temp. Pneu. Self-Closing
- PS2 Dual Temp. Pneu. Self-Closing
- PM1 Single Temp. Pneu. Metering
- PM2 Dual Temp. Pneu. Metering
- EL1 Single Temp. Electronic
- EL2 Dual Temp. Electronic
- PBH Anti-Suicide Pushbutton

### 7.) Lavatory Waste:

- OV Lavatory Overflow
- CW1 Combined Waste w/o Clean-out
- CW2 Combined Waste w/ Clean-out
- SD Slow Drain

### 8.) Toilet Waste:

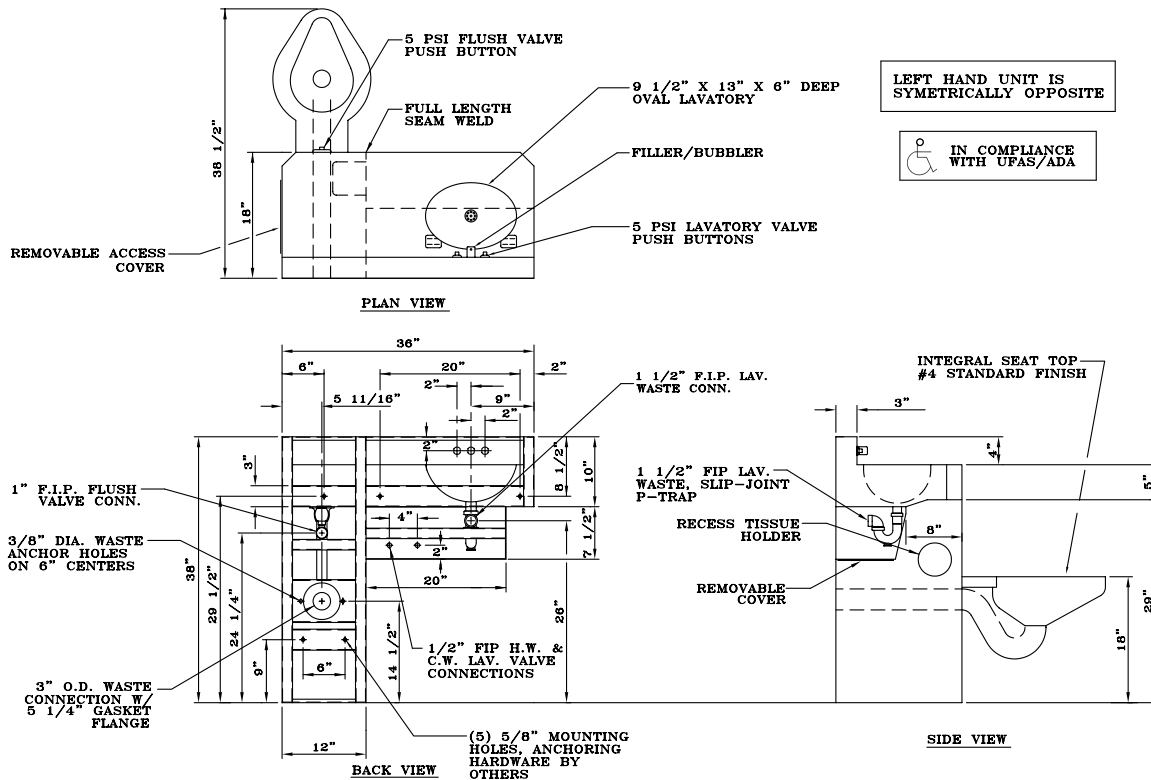
- TWE Toilet Waste Extension
- TW3 Coupling & 3" Clean-out for TWE
- TW4 Floor Outlet Waste Conn.
- TW5 Coupling & 4" Clean-out for TWE
- PC Pinned Clean-out PVC
- PCB Pinned Clean-out Brass

### 9.) Options:

- T4 Top-Four Overflow Preventer (Requires Hydraulic Flush Valve)
- LF Low-Flow, 1.6 Gallon Flush
- HS Hinged Plastic Seat
  - Black
  - White
- RTH Recessed Tissue Holder (Specify Loc)
- ISH Integral Shelf
- TB1 Toothbrush Holder (Specify Loc)
- TB2 Dual Toothbrush Holder (Specify Loc)
- TH1 Single Towel Hook (Specify Loc)
- TH2 Dual Towel Hook (Specify Loc)
- HPS High Polish Seat
- VG Ventilation Grille (Specify Loc & Free Area)
- MT Metal Template
- WS Wall Sleeve
- FV Flush Valve
- SK Anti-Suicide Skirt
- TG 12 Gauge Cabinet
- GB Grab Bar (s) \_\_\_\_\_
- Other: \_\_\_\_\_
- Other: \_\_\_\_\_

Approved For Manufacturing By: \_\_\_\_\_ Date: \_\_\_\_\_ Company: \_\_\_\_\_  
 Wall Thickness \_\_\_\_\_ Wall Type \_\_\_\_\_

VERIFY ALL DIMENSIONS PRIOR TO ROUGH-IN



## Willoughby Industries, Inc.