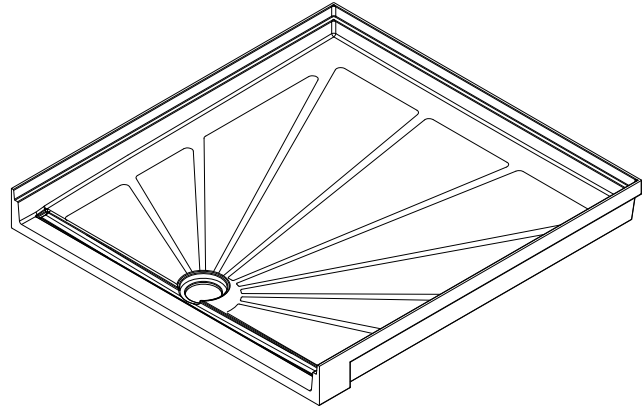


Aquasurf® Solid Surface Shower Receptors

ADA Accessible W/ Trench Drain

✓	MODEL NUMBER	SIZE
	AS-S3840FA	36" x 36" TRANSFER PAN
	AS-S3462FA	30" x 60" ACCESSIBLE PAN



36x36 Shown

Recommended Specifications _____

Solid Surface Shower Receptor shall be Aquasurf® Solid Surface Products cast model

#AS-S _____ (select from table).

Aquasurf® Solid Surface Products Shower Receptors are designed for single and multiple applications. The Shower Receptor shall be a monolithic cast component of Aquasurf® Solid Surface Products polymer materials, composed of fully densified aluminum trihydrate mineral fillers, homogeneously blended in a engineered, UV stabilized, acrylic modified polyester resin.

Shower Receptor shall have integrally molded support bracing on bottom, positive sloped non-slip textured interior floor, and integral perimeter flange. Aquasurf® Solid Surface Products Shower Receptors shall incorporate, integral threshold, and curb, and 3 1/2" standard drain opening, (for 2" No-Hub connection).

ADA Accessibility (consult local code requirements for design integration) shall incorporate a front forward drain, with integrally sloped trench, allowing for drainage of shower curtain run off. The integral front transition strip shall provide room floor drainage toward trench and shower access ramping.

Shower Receptor shall be available in Solid Color or Granite Pattern (indicate color selection). Solid Surface Shower Receptor shall comply with ANSI Z124.2.

Vandal Resistance:

Aquasurf® Solid Surface Products Shower Receptors offer high impact, chip, scratch, and burn resistance. Topical surface damages can easily be repaired with minor abrasive applications (3M #7448 Scotch-Brite®). The viral, bacteriological, chemical, mildew, and mold resistance provides a sanitary, easily cleaned, durable, low maintenance component.

Optional Features:

Aquasurf® Solid Surface Products wall panel kits with overlay battens, coved corners; soap/shampoo assemblies provide all components required to complete shower area enclosure (refer to selection sheet for unit designation).

Visit our website at <http://www.willoughby-ind.com>

2210 West Morris Street • P.O. Box 21217 • Indianapolis, IN 46221

(317) 638-2381 • Fax: (317) 638-6110 • (800) 428-4065

MODEL NUMBER AND OPTIONS:

1.) Receptacle Type:

- AS-S3840FA 36x36 Transfer Pan
- AS-S3462FA 30x60 Accessible Pan

2.) Wall Kits (3/8" Panels):

- ASK-S363672 (3)-36x72 Panels
- ASK-S603672 (2)-36x72 Panels
(2)-29x72 Panels
(1)-AS-B0272 Batten Trim

3.) Commercial Wall Kits (1/4" Panels):

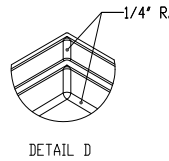
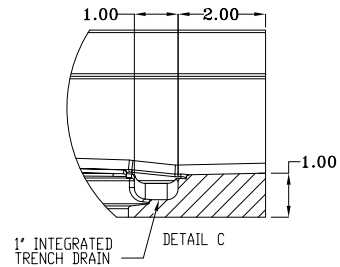
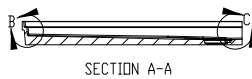
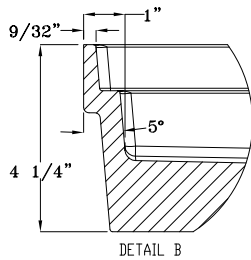
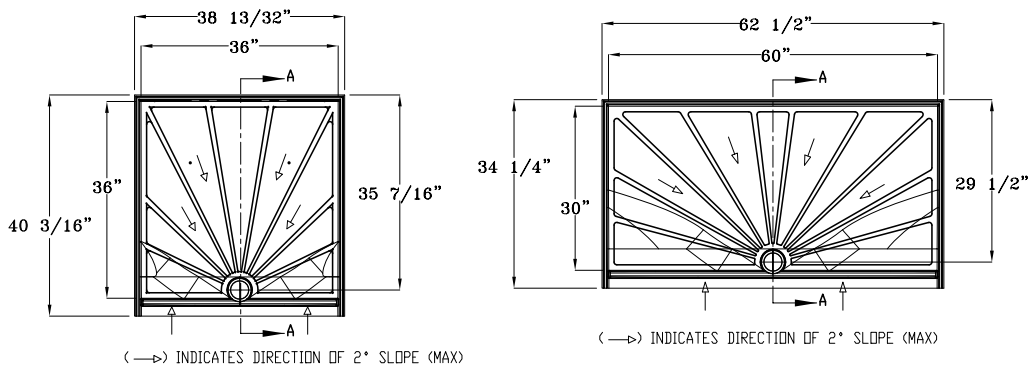
- ASK-S363684 (3)-36x84 Panels
- ASK-S603684 (2)-36x84 Panels
(2)-29x84 Panels
(1)-AS-B0296 Batten Trim

4.) Accessories:

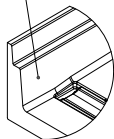
- AS-ISCR Inside Corner Overlay Trim
- AS-IS-CV8 Inside Corner Cove Overlay
- ASK-UP84 Upgrade Kit to 84"
- AS-SSH Soap/Shampoo Holder

Drawing Approved For Manufacturing By: _____ Date: _____ Company: _____
 Wall Thickness: _____ Wall Type: _____

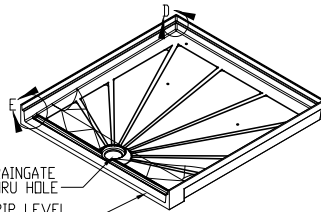
VERIFY ALL DIMENSIONS PRIOR TO ROUGH-IN



BEVELED FINISHED SURFACE TO BE EVEN WITH WALL



4 1/2" DRAINGATE
 3 1/2" THRU HOLE
 TOP EDGE OF TRANSITION STRIP LEVEL WITH TOP OF FINISHED FLOOR



Willoughby Industries, Inc.