

CES-912 Hand Sink

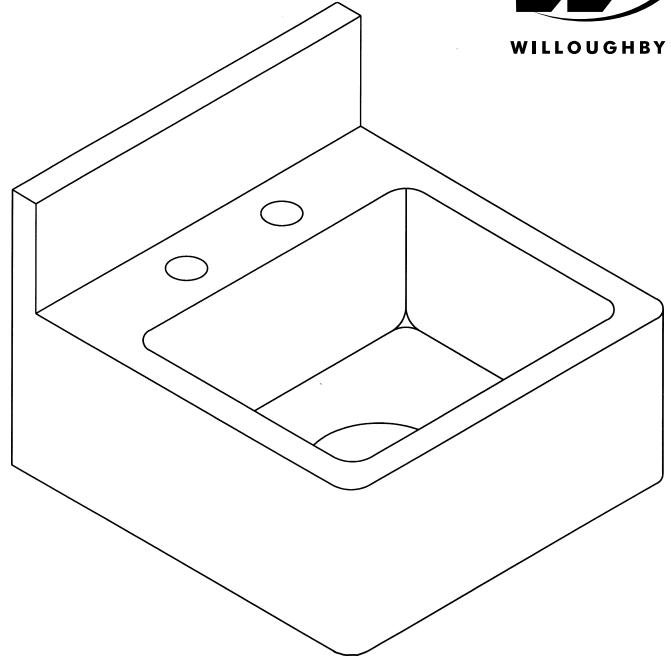
Recommended Specifications _____

Hand sink shall be Willoughby Model No. **CES-912**.

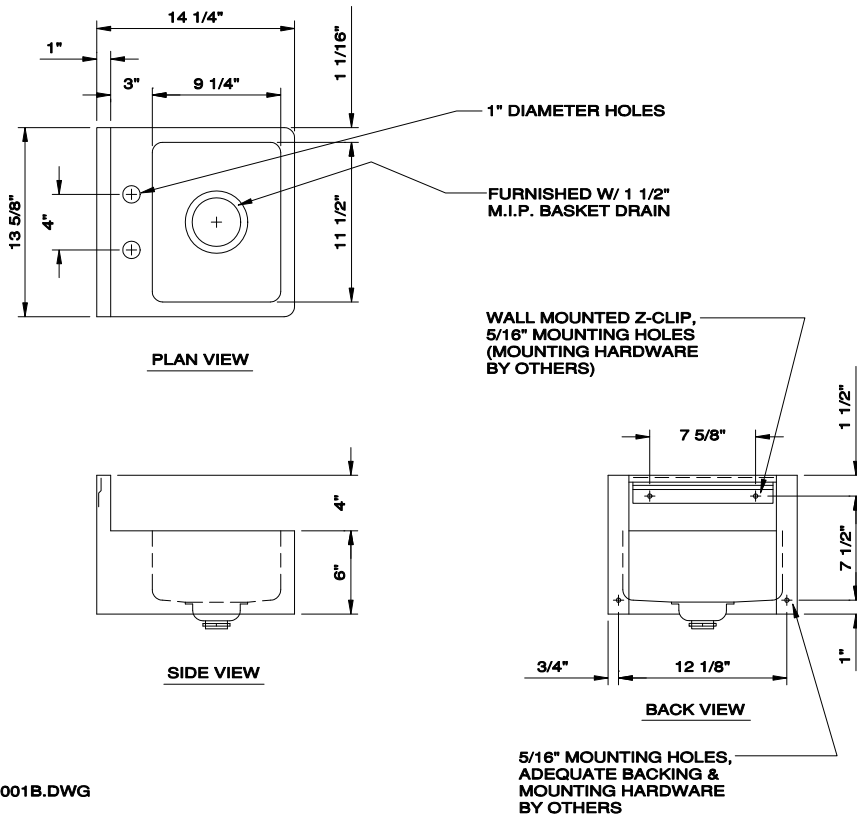
Fixture shall be fabricated from 16 gauge, type 304 stainless steel. The construction shall be all-welded, with exposed stainless surfaces polished to a #4 satin finish.

Standard lavatory shall include: rectangular shaped bowl, 11 1/2" x 9 1/4" x 5" deep, 1 1/2" M.I.P. basket drain, and 4" on center deck mounted faucet holes, (faucet by others).

Anchoring shall be from front with "z" clips and anchoring holes, anchoring hardware by others. Unit requires no chase area for installation and maintenance.



VERIFY ALL DIMENSIONS PRIOR TO ROUGH-IN



Made In The **U.S.A.**



Visit our website at <http://www.willoughby-ind.com>

2210 West Morris Street • P.O. Box 21217 • Indianapolis, IN 46221

(317) 638-2381 • Fax: (317) 638-6110 • (800) 428-4065