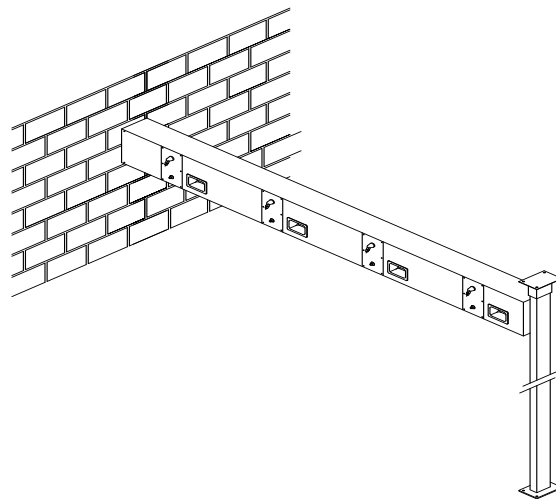


CWBTBS-Series Back to Back Continuous Wall Shower

✓	MODEL NUMBER	VALVE TYPE
	CWBTBS-PM1	SINGLE TEMP PNEU. METERING
	CWBTBS-PM2	DUAL TEMP PNEU. METERING
	CWBTBS-EL1	SINGLE TEMP ELECTRONIC
	CWBTBS-EL2	DUAL TEMP ELECTRONIC
	CWBTBS-PB	PRESSURE BALANCING
	CWBTBS-TSV	THERMOSTATIC
	CWBTBS-H	SINGLE TEMP COMPRESSION
	CWBTBS-HC	DUAL TEMP COMPRESSION
	CWBTBS-NV	NO VALVE



NUMBER OF SHOWER HEADS	INLET DIAMETER*
1 TO 4	3/4"
5 TO 8	1"
9 TO 11	1 1/4"
12+	1 1/2"

* based on 45 psi inlet pressure

Recommended Specifications

Back to Back Continuous wall shower system shall be Willoughby Model No. **CWBTBS-___** (select valve from table above).

Shower housing shall be fabricated from 16 gauge, type 304 stainless steel with exposed stainless surfaces polished to a #4 satin finish.

Back to Back Continuous wall shower systems are designed for each specific application.

Standard equipment shall include: shower valve _____ (as selected from table above), removable individual shower station panels fastened with vandal resistant security screws, APS adjustable spray vandal resistant shower head, and flexible water supply lines. Standard spacing between shower heads shall be 36".

Shower unit shall be factory pre-piped, tested for proper operation and ready for installation by contractor. Anchoring shall be by mounting bracket on wall and floor mounted stanchion. Wall and floor anchoring hardware by others. Unit requires no chase area for installation and maintenance.

Contractor shall furnish to manufacturer exact field dimensions prior to fabrication.

Made In The U.S.A.



Visit our website at <http://www.willoughby-ind.com>

2210 West Morris Street • P.O. Box 21217 • Indianapolis, IN 46221

(317) 638-2381 • Fax: (317) 638-6110 • (800) 428-4065

MODEL NUMBER AND OPTIONS:

**1.) Shower Head Height
(Not Part of Model Number):**

- 6'-0"
- 5'-6"
- 5'-0"
- 4'-0"
- Other _____"

2.) Base Model Number:

- CWBTBS Continuous Wall Shower

3.) Number of Shower Stations:

- _____

4.) Valve Selection:

- PM1 Single Temp. Pneu. Metering
- PM2 Dual Temp. Pneu. Metering
- EL1 Single Temp. Electronic
- EL2 Dual Temp. Electronic
- PB Pressure Balancing

- TSV Thermostatic Mixing Valve
- H Single Temp. Compression
- HC Dual Temp. Compression
- NV No Valve

5.) Shower Head Options:

- APS Adjustable Penal Shower Head (Standard)
- NPS Non-Adjustable Penal Shower Head
- UBJ Universal Ball Joint Shower Head
- UDBJ Up Down Ball Joint Shower Head
- LBJ Lockable Ball Joint Showerhead

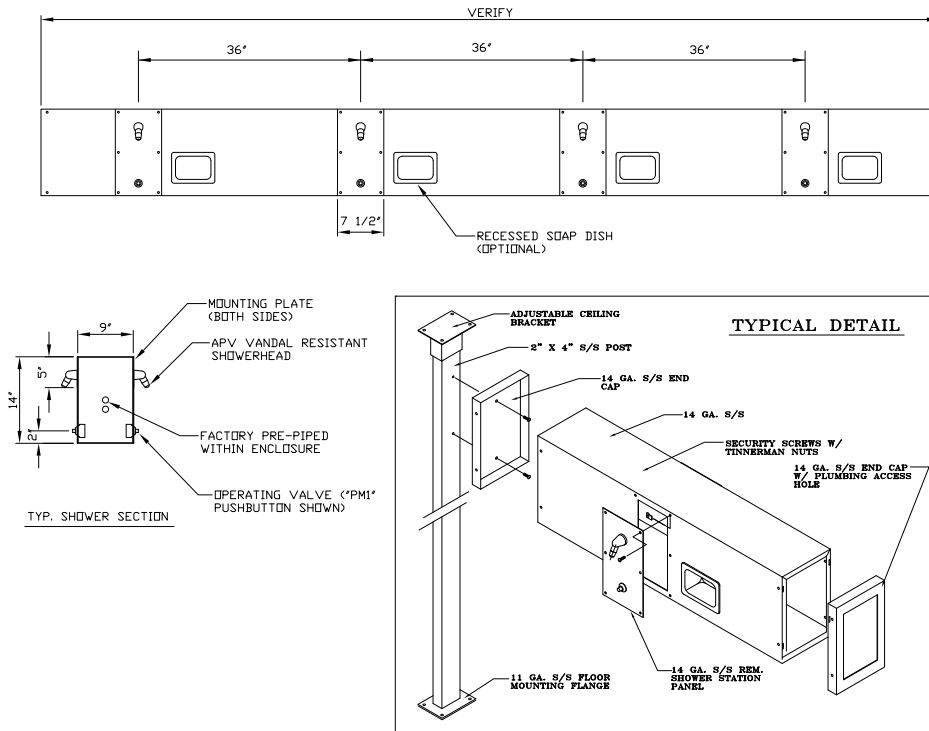
6.) Options:

- GX Individual Checkstops
- RD Recessed Soap Dish
- SD Surface Mounted Soap Dish
- PS Pipe Shroud (Specify Length)
- Other: _____
- Other: _____

Drawing Approved For Manufacturing By: _____ Date: _____ Company: _____
 Wall Thickness: _____ Wall Type: _____

Contractor shall furnish to manufacturer exact field dimensions prior to fabrication.

VERIFY ALL DIMENSIONS PRIOR TO ROUGH-IN



To specify fixture and accessories, use the Model Number and Options Guide.

Example: To specify a continuous wall shower with single temp. pneumatic metering valve, adjustable penal showerhead and recessed mounted soap dish. Use the following Willoughby Model Number:

Willoughby Model Number: CWBTBS-PM1-APS-RD

Willoughby Industries, Inc.

Made In The U.S.A.

