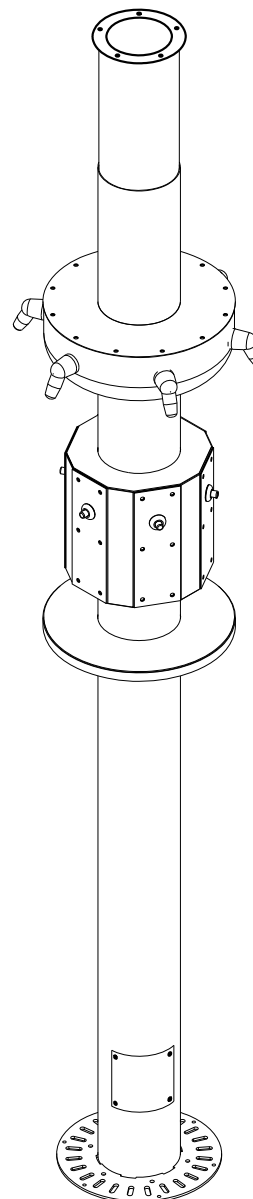


## CWCSX-Series 2-6 Station Type X Column Shower

✓	MODEL NUMBER	VALVE DESCRIPTION	SUPPLY CONNECTION
	CWCSX-_-PM1	SINGLE TEMP. METERING	3/4" T
	CWCSX-_-EL1	ELECTRONIC SINGLE TEMP. METERING	3/4" T
	CWCSX-_-H	SINGLE TEMP. COMPRESSION	3/4" T
	CWCSX-_-HC	DUAL TEMP. COMPRESSION	3/4" T&C
	CWCSX-_-NV	NO VALVE	NONE



### Recommended Specifications \_\_\_\_\_

Column shower shall be Willoughby No. **CWCSX-\_-\_-**  
(select from table above).

Standard equipment shall include: shower valving (as selected from table above), (APS) adjustable spray all stainless steel vandal resistant shower heads, 360 degree soap dish, stainless steel drain fitting, and access panel. Supply(ies) shall be from (above or below). Drain configuration shall be (vent off line or vent through column).

Shower unit shall be factory assembled, tested for proper operation and ready for installation by contractor. Mounting bolts are provided for fastening column to drain fitting. Ceiling fasteners are not furnished.

Made In The **U.S.A.**



Visit our website at <http://www.willoughby-ind.com>

2210 West Morris Street • P.O. Box 21217 • Indianapolis, IN 46221

(317) 638-2381 • Fax: (317) 638-6110 • (800) 428-4065

## MODEL NUMBER AND OPTIONS:

**1.) Shower Head Height  
(Not Part of Model Number):**

- 6'0"
- 5'6"
- 5'0"
- Other \_\_\_\_\_

**2.) Base Model Number:**

- CWCSX Column Shower

**3.) Number of Stations:**

- 2
- 3
- 4
- 5
- 6

**4.) Valve Selection:**

- PM1 Single Temp. Pneu. Metering
- EL1 Single Temp. Electronic
- H Single Temp. Compression
- HC Dual Temp. Compression
- NV No Valve

**5.) Shower Head Options:**

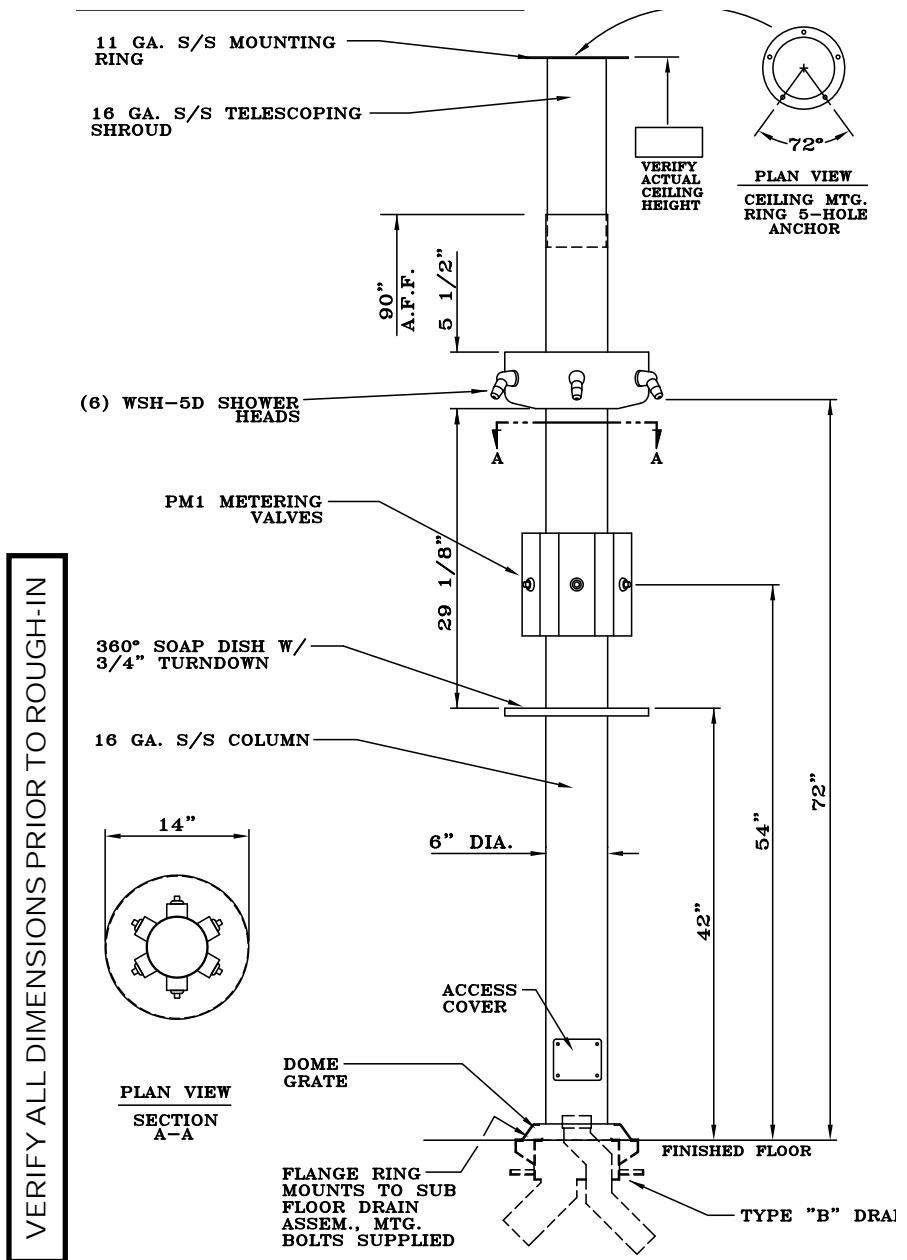
- APS Adjustable Penal Shower Head (Std)
- NPS Non Adjustable Penal Shower Head
- UBJ Universal Ball Joint Shower Head
- LBJ Lockable Ball Joint Shower Head
- FX Flexshower

**6.) Supply and Drain Type:**

- A Supplies Below / Vent Off Line
- B Supplies Above / Vent Thru Column
- C Supplies Below / Vent Thru Column
- D Supplies Above / Vent Off Line

**7.) Options:**

- BF Barrier Free Station
- CA Ceiling Anchor Plate for Supply Cover
- CD Circular Soap Tray
- DG Dome Grate
- FS Foot Shower at One Station
- GB Grab Bar (Specify Dimensions)
- GX Individual Checkstops
- HL Hi-Lo (2 Mounting Brackets for Flexshower)
- RD Recess Soap Dish
- SD Surface Mounted Soap Dish
- TC Thermostatic Controller
- TSH Telescoping Pipe Shroud (specify ceiling height) \_\_\_\_\_
- USV Unit Shut-Off Valve
- Other: \_\_\_\_\_
- Other: \_\_\_\_\_



*Made In The U.S.A.*



# Willoughby Industries, Inc.