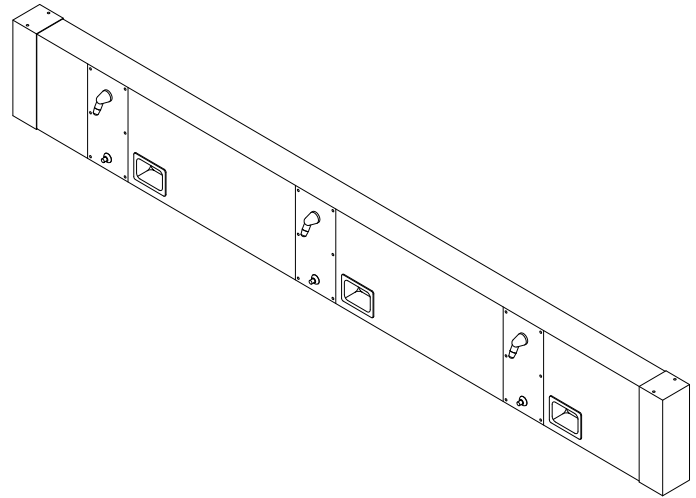


## CWCWS-Series Continuous Wall Shower



(3 station unit with some options shown)

✓	MODEL NUMBER	VALVE TYPE
	CWCWS-PM1	SINGLE TEMP PNEU. METERING
	CWCWS-PM2	DUAL TEMP PNEU. METERING
	CWCWS-EL1	SINGLE TEMP ELECTRONIC
	CWCWS-EL2	DUAL TEMP ELECTRONIC
	CWCWS-PB	PRESSURE BALANCING
	CWCWS-TSV	THERMOSTATIC
	CWCWS-H	SINGLE TEMP COMPRESSION
	CWCWS-HC	DUAL TEMP COMPRESSION
	CWCWS-NV	NO VALVE

NUMBER OF SHOWER HEADS	INLET DIAMETER*
1 TO 4	3/4"
5 TO 8	1"
9 TO 11	1 1/4"
12+	1 1/2"

\* based on 45 psi inlet pressure

### Recommended Specifications

Continuous wall shower system shall be Willoughby Model No. **CWCWS-\_\_\_** (select valve from table above).

Shower housing shall be fabricated from 16 gauge, type 304 stainless steel with exposed stainless surfaces polished to a #4 satin finish.

Continuous wall shower systems are designed for each specific application.

Standard equipment shall include: shower valve \_\_\_\_\_ (as selected from table above), removable individual shower station panels fastened with vandal resistant security screws, APS adjustable spray vandal resistant shower head, and flexible water supply lines. Standard spacing between shower heads shall be 36".

Shower unit shall be factory pre-piped, tested for proper operation and ready for installation by contractor. Anchoring shall be by mountring bracket with Uni-Strut for sulpllies, with anchoring hardware by others. Unit requires no chase area for installation and maintenance.

**Contractor shall furnish to manufacturer exact field dimensions prior to fabrication.**

Made In The **U.S.A.**



Visit our website at <http://www.willoughby-ind.com>

2210 West Morris Street • P.O. Box 21217 • Indianapolis, IN 46221

(317) 638-2381 • Fax: (317) 638-6110 • (800) 428-4065

## MODEL NUMBER AND OPTIONS:

**1.) Shower Head Height  
(Not Part of Model Number):**

- 6'-0"
- 5'-6"
- 5'-0"
- 4'-0"
- Other \_\_\_\_\_"

**2.) Base Model Number:**

- CWCWS Continuous Wall Shower

**3.) Number of Shower Stations, including handicap:**

- \_\_\_\_\_

**4.) Valve Selection:**

- PM1 Single Temp. Pneu. Metering
- PM2 Dual Temp. Pneu. Metering
- EL1 Single Temp. Electronic
- EL2 Dual Temp. Electronic
- PB Pressure Balancing

- TSV Thermostatic Mixing Valve
- H Single Temp. Compression
- HC Dual Temp. Compression
- NV No Valve

**5.) Shower Head Options:**

- APS Adjustable Penal Shower Head (Standard)
- NPS Non-Adjustable Penal Shower Head
- UBJ Universal Ball Joint Shower Head
- UDBJ Up Down Ball Joint Shower Head
- LBJ Lockable Ball Joint Shower Head
- FX Flexshower

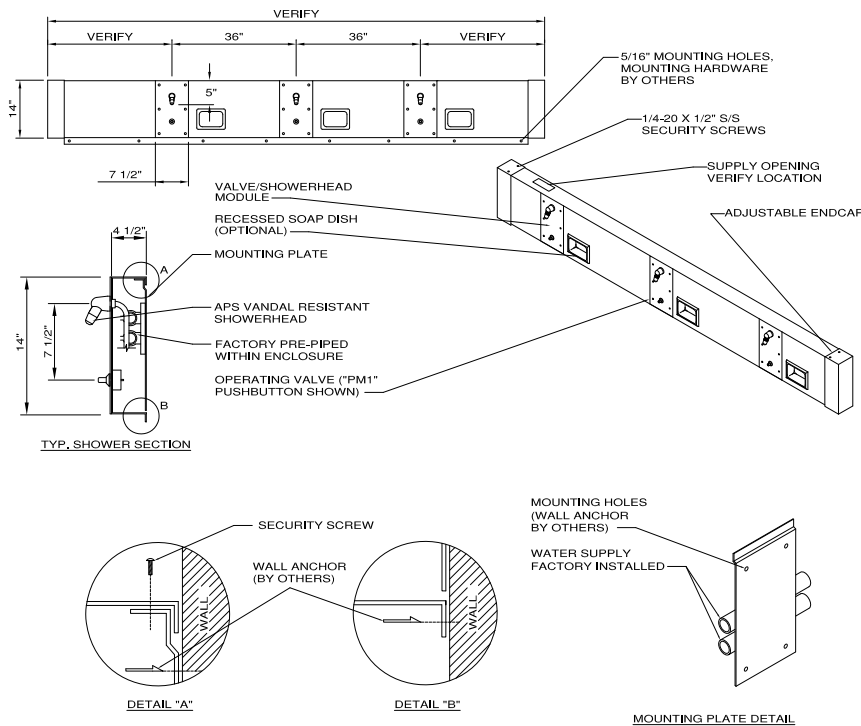
**6.) Options:**

- BF Barrier Free Station
- GB Grab Bar (Specify Dimensions)
- GX Individual Checkstops
- HL Hi-Lo (2 Mounting Brackets for Flexshower)
- RD Recessed Soap Dish
- SD Surface Mounted Soap Dish
- PS Pipe Shroud (Specify Length)
- Other: \_\_\_\_\_
- Other: \_\_\_\_\_

Drawing Approved For Manufacturing By: \_\_\_\_\_ Date: \_\_\_\_\_ Company: \_\_\_\_\_  
 Wall Thickness: \_\_\_\_\_ Wall Type: \_\_\_\_\_

**Contractor shall furnish to manufacturer exact field dimensions prior to fabrication.**

VERIFY ALL DIMENSIONS PRIOR TO ROUGH-IN



**To specify fixture and accessories, use the Model Number and Options Guide.**

Example: To specify a continuous wall shower with single temp. pneumatic metering valve, adjustable penal showerhead and recessed mounted soap dish. Use the following Willoughby Model Number:  
 Willoughby Model Number: CWCWS-PM1-APS-RD

**Willoughby Industries, Inc.**

*Made In The U.S.A.*

