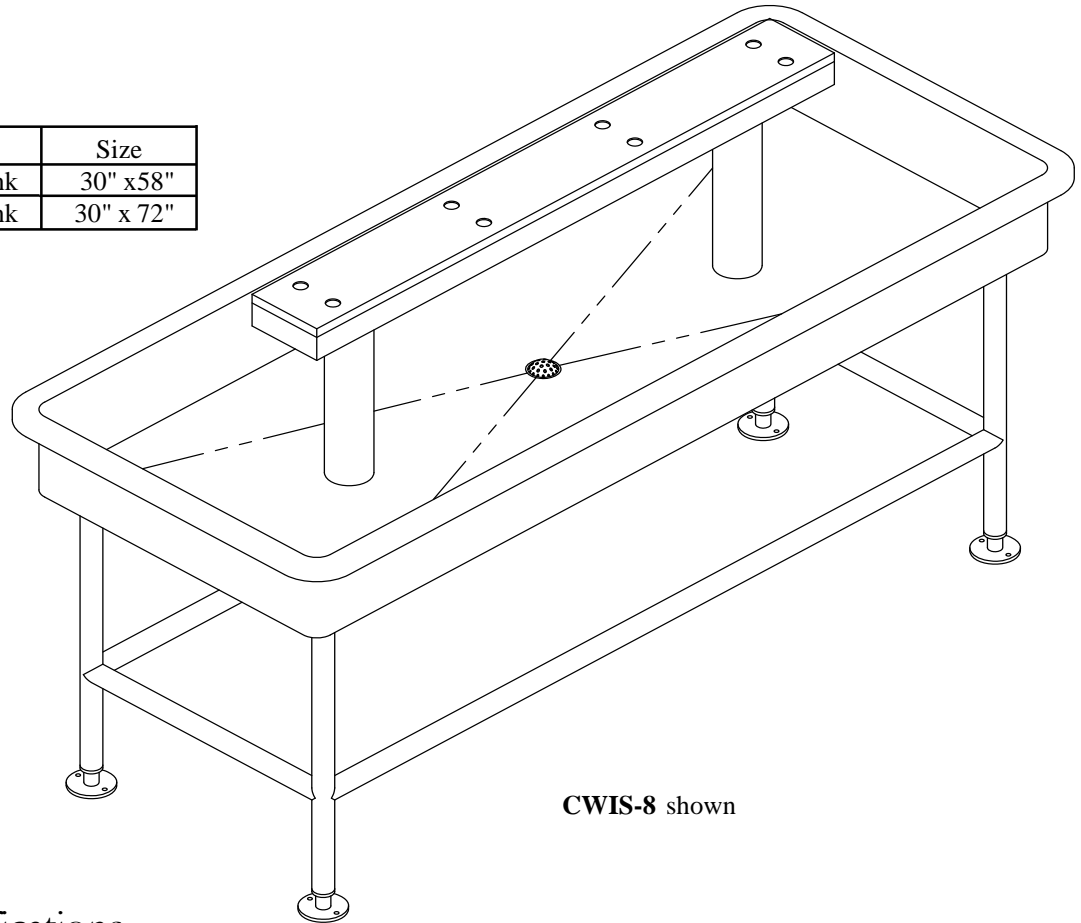


## CWIS Island Sink

✓	Model Number	Size
	<b>CWIS-6</b> 6 station sink	30" x 58"
	<b>CWIS-8</b> 8 station sink	30" x 72"



### Recommended Specifications

Island sink shall be Willoughby Model No. **CWIS** - \_\_\_\_\_ (select model from table above).

Fixture shall be fabricated from 14 gauge, type 304, stainless steel with 12 gauge stainless steel underbracing. The construction shall be all-welded, with exposed exterior surfaces polished to a #4 satin finish. Bowl interior is a bead-blast finish.

Standard equipment shall include: stainless steel bowl, stainless steel head assembly, 4" diameter stainless steel support columns, 1 1/2" O.D. stainless steel legs, adjustable flanged feet with (2) 5/16" diameter holes for anchoring to floor, 2" beehive strainer with 2" O.D. x 4" long welded-on stainless steel tailpiece, sound deaden underside of sink bowl. Stainless steel head assembly cover is secured with vandal resistant screws for removal for plumbing. Unit is field plumbed for faucet connections.

Made In The **U.S.A.**



Visit our website at <http://www.willoughby-ind.com>

2210 West Morris Street • P.O. Box 21217 • Indianapolis, IN 46221

(317) 638-2381 • Fax: (317) 638-6110 • (800) 428-4065

# Willoughby Industries - Commercial Ware



WILLOUGHBY

1) Sink Model::

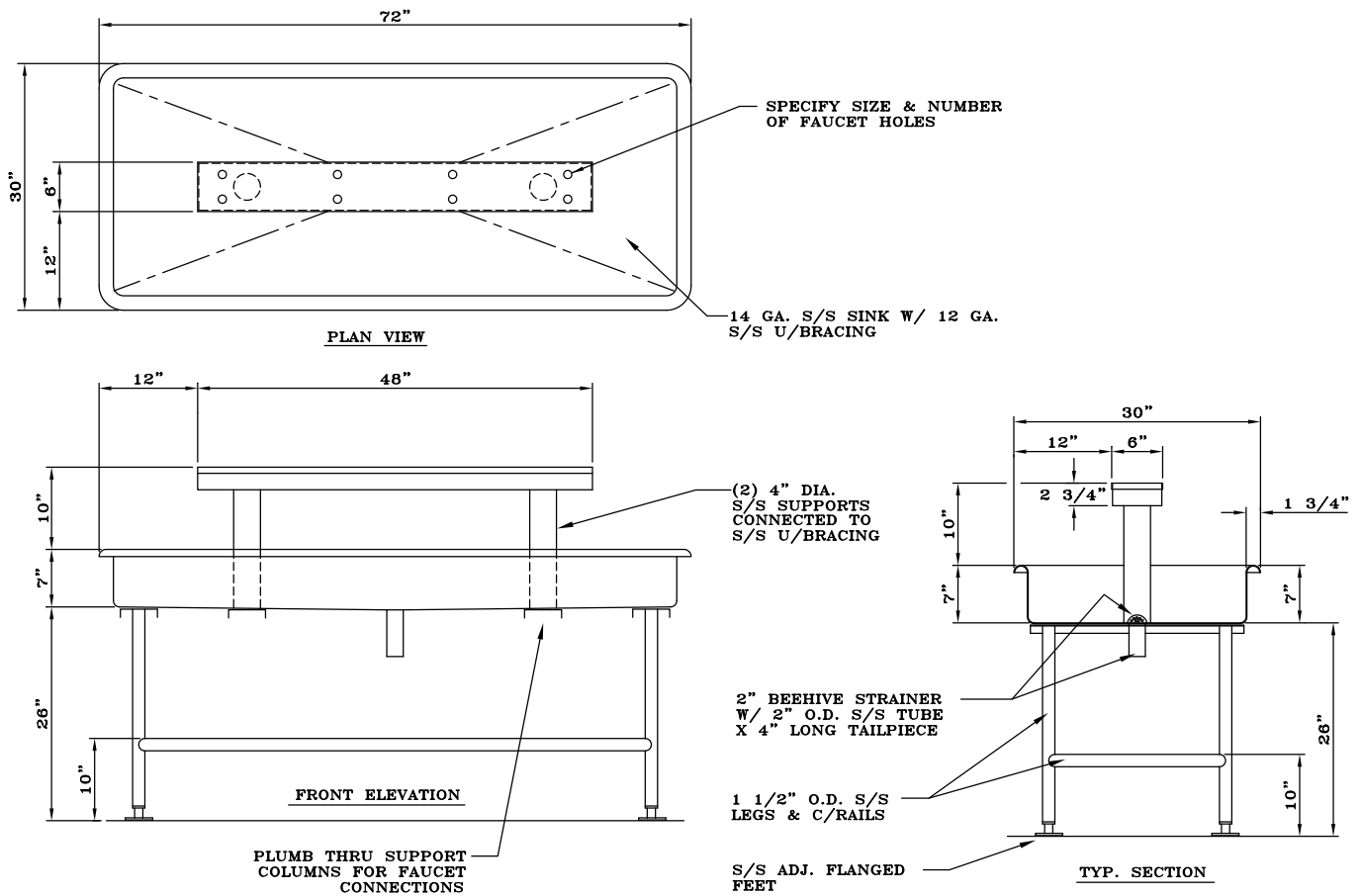
- CWIS-6      6 station sink
- CWIS-8      8 station sink

2) Options:

- SD      surface mounted soap dishes
- ENB    enclosed base

Drawing Approved For Manufacturing By: \_\_\_\_\_ Date: \_\_\_\_\_ Company: \_\_\_\_\_

VERIFY ALL DIMENSIONS PRIOR TO ROUGH-IN



Made In The U.S.A.



Visit our website at <http://www.willoughby-ind.com>

2210 West Morris Street • P.O. Box 21217 • Indianapolis, IN 46221

(317) 638-2381 • Fax: (317) 638-6110 • (800) 428-4065