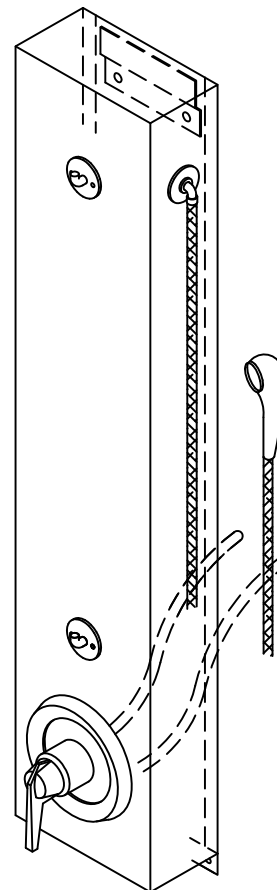


## CWSMS-FX-HL Series Single Station Surface Mounted Handicapped Wall Shower

✓	MODEL NUMBER	VALVE TYPE	SUPPLT CONN.
	CWSMS-PM1-FX-HL	SINGLE TEMP PNEU. METERING	1/2" H
	CWSMS-PM2-FX-HL	DUAL TEMP PNEU. METERING	1/2" H&C
	CWSMS-EL1-FX-HL	SINGLE TEMP ELECTRONIC	1/2" H
	CWSMS-EL2-FX-HL	DUAL TEMP ELECTRONIC	1/2" H&C
	CWSMS-PB-FX-HL	PRESSURE BALANCING	1/2" H&C
	CWSMS-TSV-FX-HL	THERMOSTATIC	1/2" H&C
	CWSMS-H-FX-HL	SINGLE TEMP COMPRESSION	1/2" H
	CWSMS-HC-FX-HL	DUAL TEMP COMPRESSION	1/2" H&C
	CWSMS-NV-FX-HL	NO VALVE	NONE



(Some options may be shown)

### Recommended Specifications \_\_\_\_\_

Surface mounted single station shower shall be Willoughby Model No. **CWSMS-\_\_\_** -FX-HL (select valve from table above).

Shower panel shall be fabricated from 16 gauge, type 304 stainless steel with exposed stainless surfaces polished to a #4 satin finish.

Standard equipment shall include: shower valve \_\_\_\_\_ (as selected from table above), quick disconnect, vacuum breaker, and hand held showerhead with two (2) hooks.

Shower unit shall be factory assembled, tested for proper operation and ready for installation by contractor. Anchoring shall be by "Z" clip and bottom flange, with anchoring hardware by others. Unit requires no chase area for installation and maintenance.

Made In The **U.S.A.**



Visit our website at <http://www.willoughby-ind.com>

2210 West Morris Street • P.O. Box 21217 • Indianapolis, IN 46221

(317) 638-2381 • Fax: (317) 638-6110 • (800) 428-4065

## MODEL NUMBER AND OPTIONS:

**1.) Base Model Number:**

- CWSMS-FX-HL Single Station Surface Mounted Handicapped Shower

**2.) Valve Selection:**

- PM1 Single Temp. Pneu. Metering
- PM2 Dual Temp. Pneu. Metering
- EL1 Single Temp. Electronic
- EL2 Dual Temp. Electronic
- PB Pressure Balancing
- TSV Thermostatic Mixing Valve
- H Single Temp. Compression
- HC Dual Temp. Compression
- NV No Valve

**4.) Shower Head Options:**

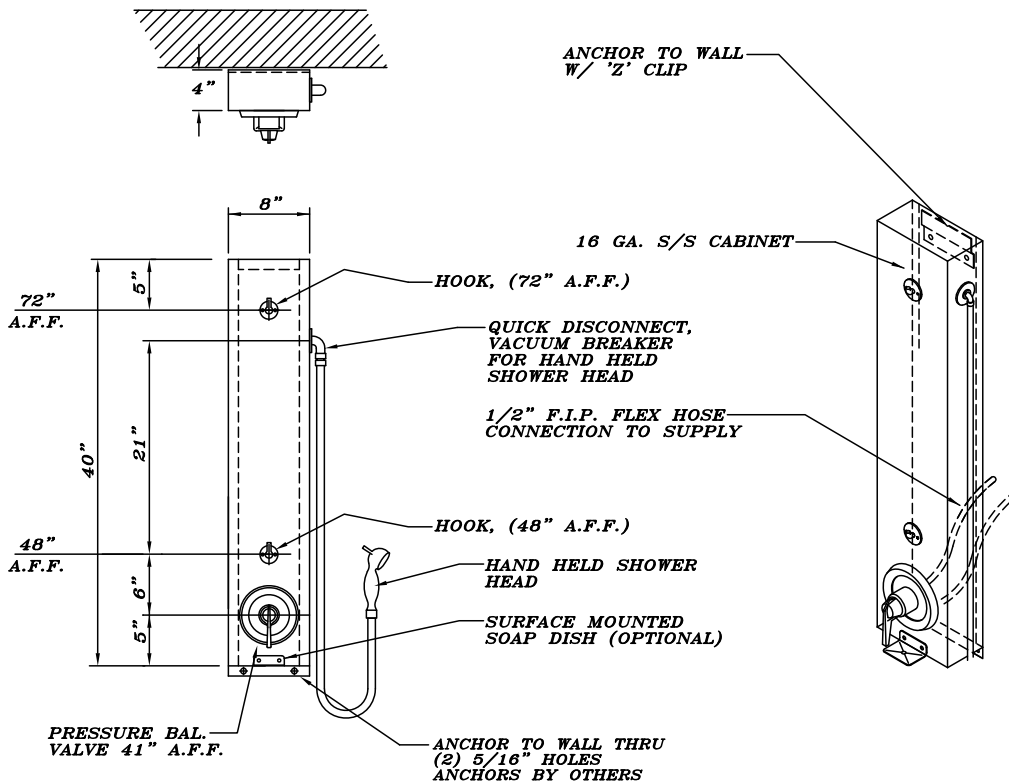
- FX Flexshower
- HL Hi-Lo (2 mounting hooks for Flexshower)

**5.) Options:**

- GB Grab Bar (Specify Dimensions)
- GX Individual Checkstops
- RD Recessed Soap Dish
- SD Surface Mounted Soap Dish
- PS Pipe Shroud (Specify Length)
- Other: \_\_\_\_\_
- Other: \_\_\_\_\_

Drawing Approved For Manufacturing By: \_\_\_\_\_ Date: \_\_\_\_\_ Company: \_\_\_\_\_  
 Wall Thickness: \_\_\_\_\_ Wall Type: \_\_\_\_\_

VERIFY ALL DIMENSIONS PRIOR TO ROUGH-IN



**Willoughby Industries, Inc.**

Made In The U.S.A.

