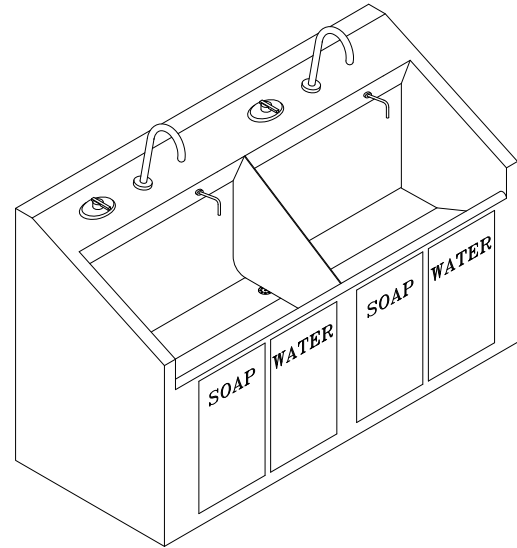


CWSSS-Series Surgical Scrub Sink

✓	MODEL	LENGTH	WIDTH	NUMBER OF
	CWSSS-1	32"	27"	1
	CWSSS-2	64"	27"	2
	CWSSS-3	96"	27"	3



Recommended Specifications

Knee Activated Surgical Scrub sink shall be Willoughby model no. **CWSSS-**_ (select from table above).

Fixture shall be fabricated from 14 gauge type 304 stainless steel. The construction shall be all-welded with exposed exterior stainless steel surfaces polished to a #4 satin finish. Bowl(s) shall have bead-blast finish.

Standard equipment shall include: knee-activated mechanical pilot type water valve(s) activated by one push of a knee operated front panel and turned off by a second push, control panel mounted thermostatic mixing valve, swivel aerator spray head, 1 1/2" strainer drain with tailpiece, 1 1/2" F.I.P. slip joint, cast brass union p-trap, and under mount thermostatic mixing valve.

Anchoring shall be from the front with "z"-clip and anchoring hardware by others. Unit requires no chase area for installation and maintenance.

Units are provided with front panels which are easily removed for access to valves and waste connections.

Optional Features

- Liquid Soap System - Knee Activated
- Mounting Carrier
- Mounting Base
- Divider Panels
- Storage Shelf
- Digital Time Display
- Electronic Timing Controller
- Laminar Flow Nozzle

Mechanical Requirements

- 1/2" MIP hot and cold supplies
- 1 1/2" FIP drain connection

Visit our website at <http://www.willoughby-ind.com>

2210 West Morris Street • P.O. Box 21217 • Indianapolis, IN 46221

(317) 638-2381 • Fax: (317) 638-6110 • (800) 428-4065

MODEL NUMBER AND OPTIONS:

1.) Series:

- CWSSS Surgical Scrub Sink

2.) Stations:

- 1 One Station
 2 Two Station
 3 Three Station

3.) Actuation:

- KA Knee Actuated
 IR Sensor Actuated
 (includes plug-in transformer)

4.) Mounting:

- MC Mounting Carrier (off-floor installation)
 MB Mounting Base (on-floor installation)

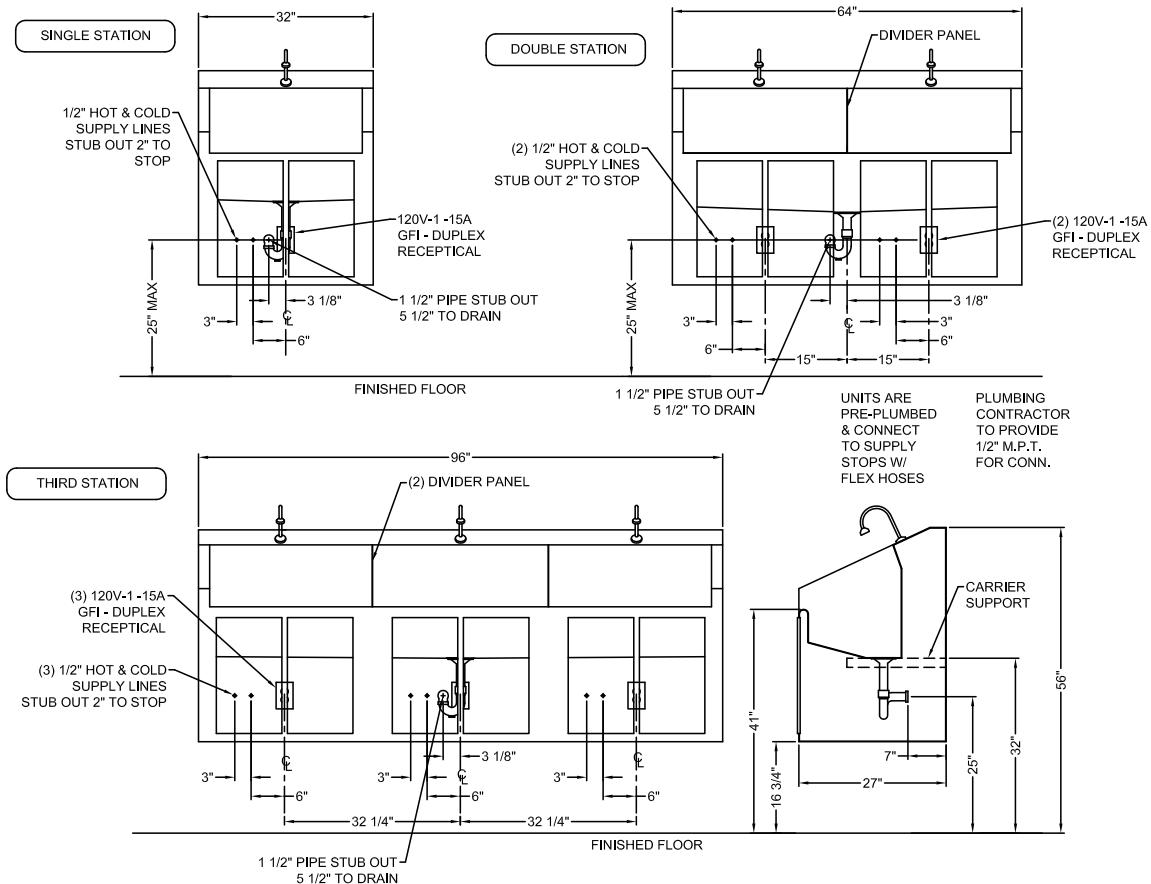
5.) Options

- DP Divider Panel(s)
 LSD Liquid Soap Dispenser(s), Knee activated
 PB Pressure Balancing Valve(s) - Deck Mounted
 (In lieu of Thermostatic Mixing Valve)
 SS Storage Shelf
 DTD Digital Time Display
 LFN Laminar Flow Nozzle
 Other: _____
 Other: _____

Drawing Approved For Manufacturing By: _____ Date: _____ Company: _____

Wall Thickness: _____ Wall Type: _____

VERIFY ALL DIMENSIONS PRIOR TO ROUGH-IN



Willoughby Industries, Inc.