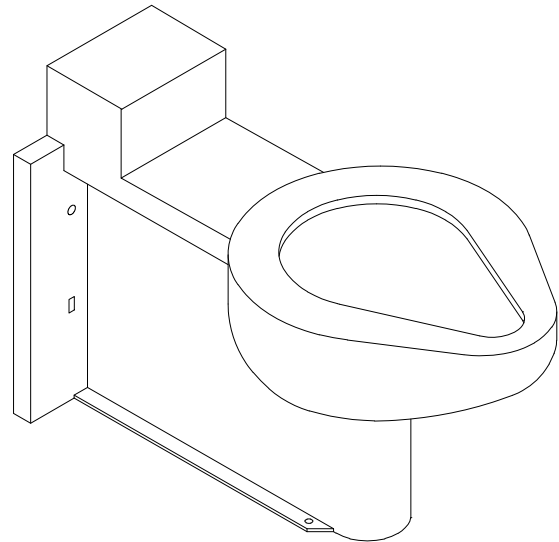


## ETWS-1490-FM-FA Floor Mounted Front Mounted Siphon Jet Series Water Closet



✓	MODEL NUMBER	INLET LOCATION
	ETWS-1490-FM-BS-FA**	BACK
	ETWS-1490-FM-TS-FA	TOP

\*\*Requires chase or "AP" option

### Recommended Specifications

Toilet shall be Willoughby Model No. **ETWS-1490-FM-\_\_-FA** (select from table above).

Fixture shall be fabricated from 14 gauge, type 304 stainless steel. The construction shall be all-welded, with exposed stainless surfaces polished to a #4 satin finish.

Standard toilet shall include: elongated toilet bowl with contoured seat, integral crevice-free self-draining flushing rim with positive afterfill and fully enclosed 2 1/2" O.D. trap which shall maintain a minimum 2" seal and pass a 2 1/8" ball. Toilet shall be siphon jet type which requires 35 psi minimum flushing pressure.

Fixture shall withstand loadings up to 2,000 lbs. with no

measurable deflection and loadings up to 5,000 lbs. with no permanent damage.

Anchoring shall be through the front and through the floor (anchoring hardware provided by others). Unit requires no chase area for installation and maintenance.

Note: For 3 1/2 gallon flush, unit will pass a 2 5/8" ball.

*On back to back fixture installations, do not use standard cross type waste fittings: cross flow may result due to blowout jet action. Use sanitary or offset type waste fittings.*

Made In The **U.S.A.**



Visit our website at <http://www.willoughby-ind.com>

2210 West Morris Street • P.O. Box 21217 • Indianapolis, IN 46221  
(317) 638-2381 • Fax: (317) 638-6110 • (800) 428-4065

# MODEL NUMBER AND OPTIONS:

**1.) Toilet Waste Location:**

- ETWS Wall, Siphon Jet

**2.) Base Model Number:**

- 1490

**3.) Fixture Mounting:**

- FM Floor Mounted

**4.) Inlet Location:**

- BS Back Spud
- TS Top Spud

**5.) Fixture Access:**

- FA Front Access

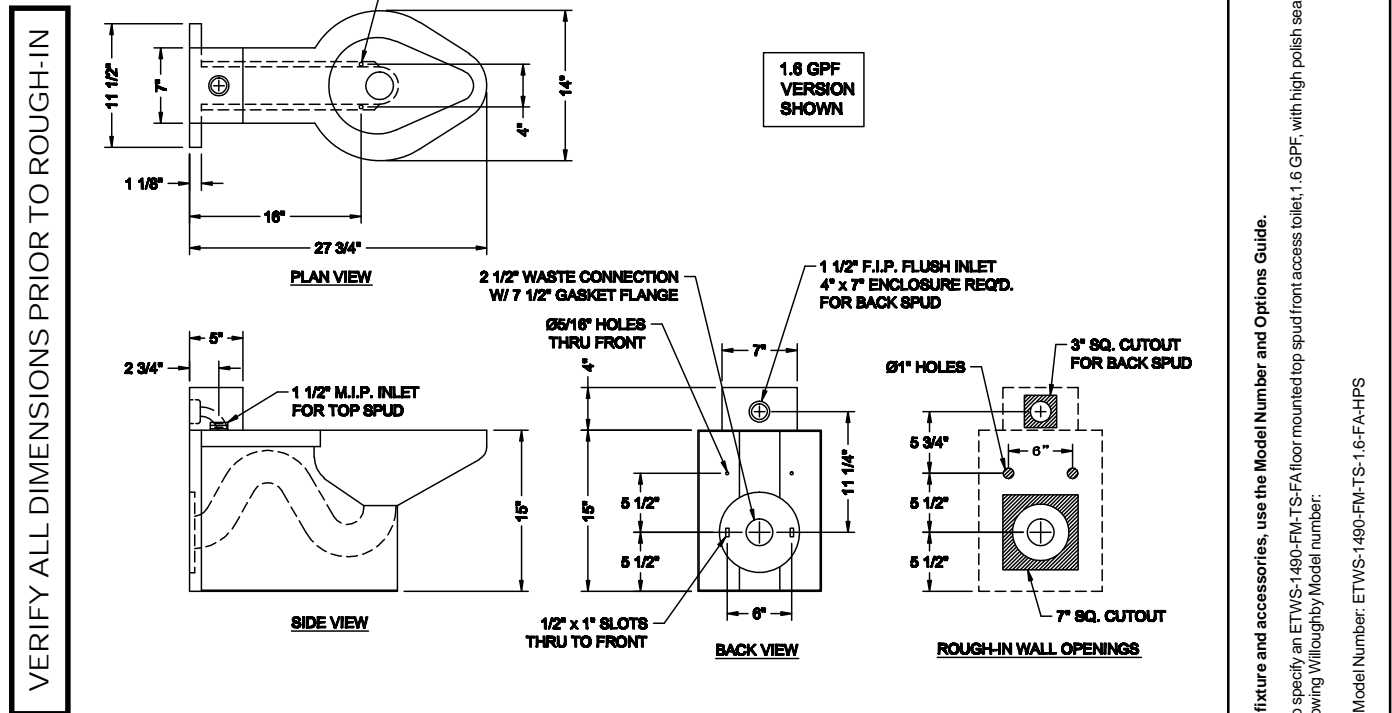
**6.) Flush Valve GPF's (Must Specify):**

- 1.6 GPF (Low Consumption)
- 3.5 GPF

**7.) Options:**

- FV Flush Valve
- FVC Flush Valve Cover (Top Spud)
- FVT Flush Valve Connection
- AP Flush Valve Access Panel
- HC Handicap Height
- HS Hinged Plastic Seat
  - Black
  - White
- HPS High Polish Seat
- MT Metal Template
- PC Pinned Cleanout
- RTH1 Wall Mounted Recessed Tissue Holder
- RTH2 Wall Mounted Recessed Tissue Holder (Front Access)
- T4 Manual Reset Toilet Overflow Preventer (Requires Hydraulic Flush Valve)
- T4A Auto Reset Toilet Overflow Preventer (Requires Hydraulic Flush Valve)
- TSC Toilet Shipping Cover
- WO3 3" Toilet P-Trap (3.5 GPF Only)
- Other: \_\_\_\_\_
- Other: \_\_\_\_\_

Drawing Approved For Manufacturing By: \_\_\_\_\_ Date: \_\_\_\_\_ Company: \_\_\_\_\_  
 Wall Thickness \_\_\_\_\_ Wall Type \_\_\_\_\_



To specify fixture and accessories, use the Model Number and Options Guide.  
 Example: To specify an ETWS-1490-FM-TS-FA floor mounted top spud front access toilet, 1.6 GPF, with high polish seat. Use the following Willoughby Model number:  
 Willoughby Model Number: ETWS-1490-FM-TS-1.6-FA-HPS

**Willoughby Industries, Inc.**

Made In The U.S.A.

