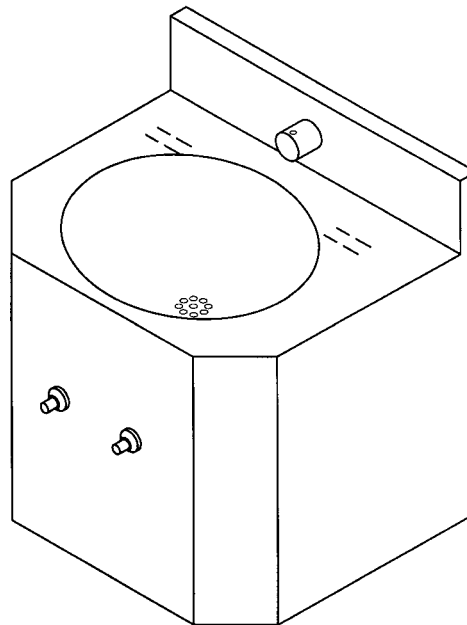


## HS-1013-96-FA

### Front Access

### 18" Wide

### Lavatory



## Recommended Specifications

---

Front Access lavatory shall be Willoughby Model No. **HS-1013-96-FA**.

Fixture shall be fabricated from 14 gauge, type 304 stainless steel. The construction shall be all-welded, with exposed stainless surfaces polished to a #4 satin finish.

Standard lavatory shall include: oval shaped bowl, 13" x 9 1/2" x 6" deep, stainless steel penal filler/bubbler, 1 1/2"

slip joint, cast brass union p-trap, factory mounted dual temperature pneumatic valve assembly, removable bottom panel attached with vandal resistant screws, and self-draining soap dishes.

Anchoring shall be from the front with z-clip and anchoring holes provided. Anchoring hardware by others. Unit requires no chase area for installation or maintenance.

Visit our website at <http://www.willoughby-ind.com>

2210 West Morris Street • P.O. Box 21217 • Indianapolis, IN 46221

(317) 638-2381 • Fax: (317) 638-6110 • (800) 428-4065

## MODEL NUMBER AND OPTIONS

**1.) Lavatory Type:**

HS

SD Slow Drain

**2.) Base Model Number:**

1013-96 18" Lavatory

**7.) Options:**

MT Metal Template

TB1 Toothbrush Holder  
(Specify Location)

TB2 Dual Toothbrush Holder  
(Specify Location)

TH1 Single Towel Hook  
(Specify Location)

TH2 Dual Towel Hook  
(Specify Location)

ISH Integral Shelf

Other: \_\_\_\_\_

Other: \_\_\_\_\_

**3.) Front Access**

FA Front Access

**4.) Bubbler or Spout Selection:**

BP Penal Bubbler

BC Code Bubbler

FL Lav/Filler

BPH Hemispherical Penal Bubbler

**5.) Valve Selection:**

PM1 Single Temp. Pneu.  
Metering

PM2 Dual Temp. Pneu.  
Metering (Standard)

EL1 Single Temp. Electronic

EL2 Dual Temp. Electronic

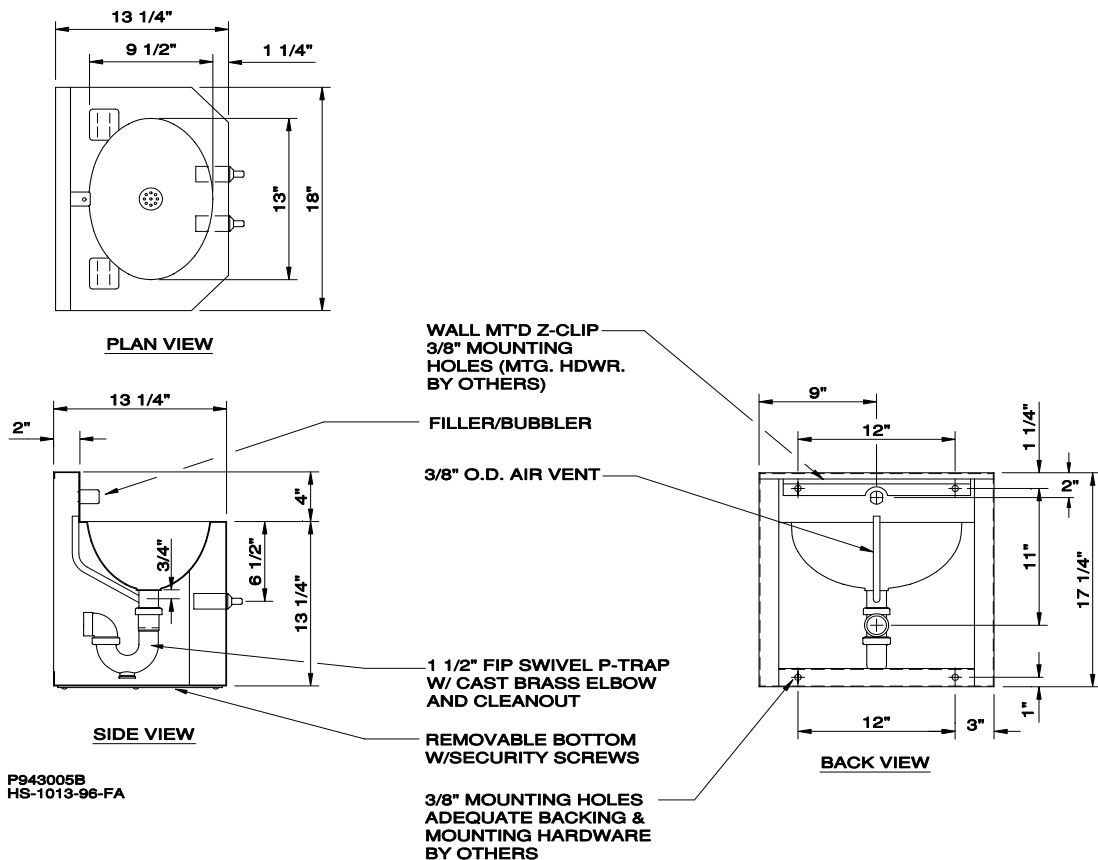
PBH Hemispherical Pushbutton

**6.) Lavatory Waste:**

Drawing Approved For Manufacturing By: \_\_\_\_\_ Date: \_\_\_\_\_ Company: \_\_\_\_\_

Wall Thickness: \_\_\_\_\_ Wall Type: \_\_\_\_\_

**VERIFY ALL DIMENSIONS PRIOR TO ROUGH-IN**



To specify fixture and accessories, use the Model Number and Options Guide.  
 Example: To specify an HS-1013-96-FA front access lavatory with code bubbler, dual temp. pneumatic metering valve.  
 Use the following Willoughby Model Number:  
 Willoughby Model Number: HS-1013-96-FA-BC-PM2

## Willoughby Industries, Inc.