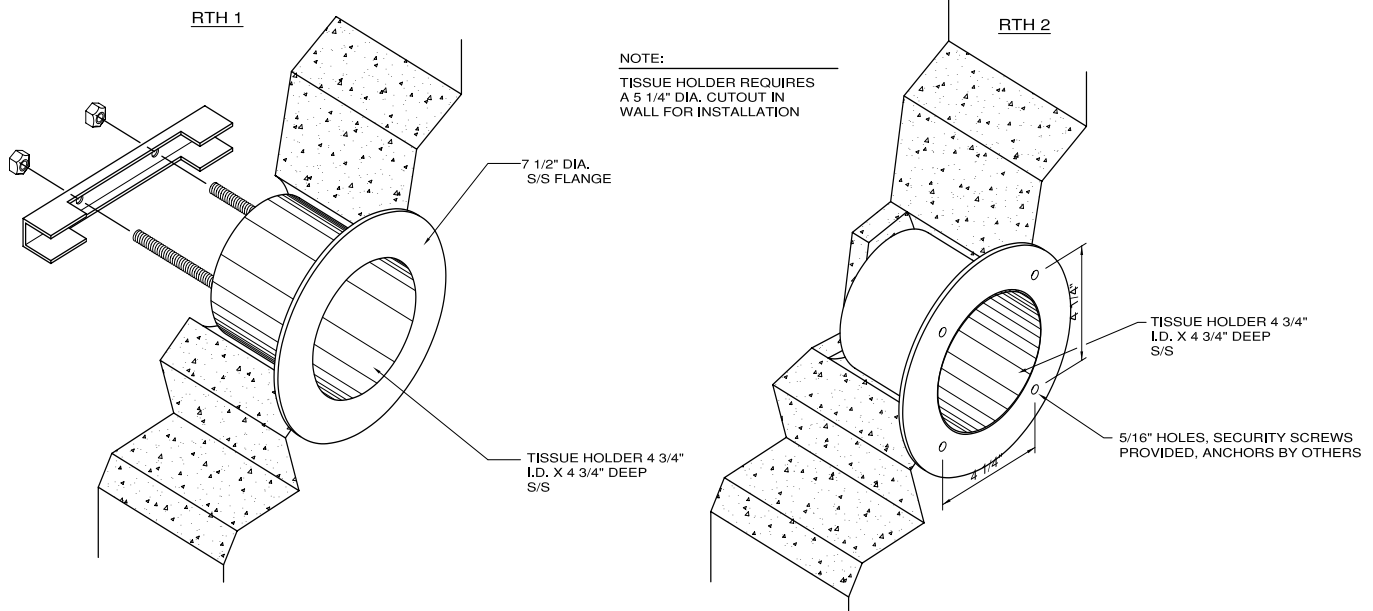
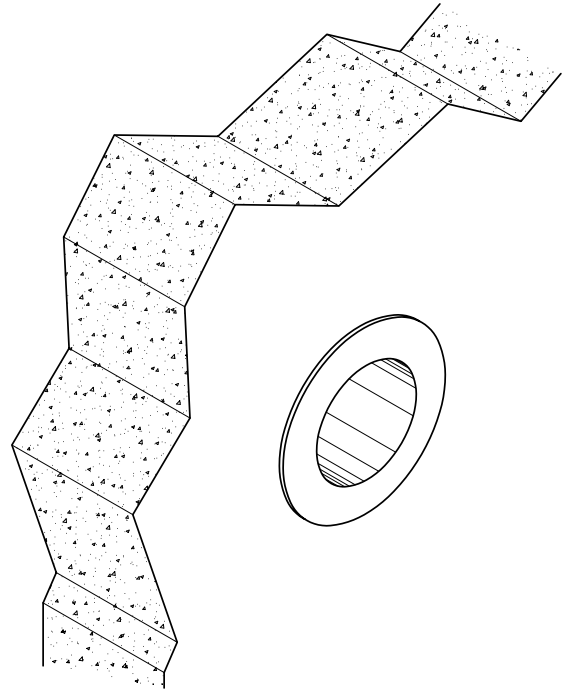


RTH-1 Rear Mounted Tissue Holder

RTH-1 recessed toilet tissue holder to be die-formed of 16 gauge, type 304 stainless steel with #4 satin finish on exposed flange. Flange edge to be turned back providing a tight fit to wall. Holder shall accommodate a standard roll of tissue, measuring 4 1/2" in diameter and 4 1/2" deep; providing no free area for the concealment of contraband. Mounting hardware supplied with tissue holder.

RTH-2 Front Mounted Tissue Holder

RTH-2 front mounted recessed toilet tissue holder to be die-formed of 16 gauge, type 304 stainless steel with #4 satin finish on exposed flange. Flange edge to be turned back providing a tight fit to wall. Holder shall accommodate a standard roll of tissue, measuring 4 1/2" in diameter and 4 1/2" deep; providing no free area for the concealment of contraband. Mounting shall be from the front, stainless steel security screws provided, wall anchors by others.



NOTE:
TISSUE HOLDER REQUIRES
A 5 1/4" DIA. CUTOUT IN
WALL FOR INSTALLATION

Visit our website at <http://www.willoughby-ind.com>

2210 West Morris Street • P.O. Box 21217 • Indianapolis, IN 46221

(317) 638-2381 • Fax: (317) 638-6110 • (800) 428-4065