

## Front Access Cabinet Shower

✓	MODEL NUMBER	CABINET STYLE	LENGTH	WIDTH
	US-3030-FA	UNITIZED	30"	30"
	US-3232-FA	UNITIZED	32"	32"
	US-3636-FA	UNITIZED	36"	36"
	KS-3030-FA	KNOCKDOWN	30"	30"
	KS-3232-FA	KNOCKDOWN	32"	32"
	KS-3636-FA	KNOCKDOWN	36"	36"

### Recommended Specifications \_\_\_\_\_

Front access cabinet shower shall be Willoughby Model No. \_\_\_**S**-\_\_\_-**FA** (select from table above).

Shower cabinet shall be fabricated from 14 gauge, type 304 stainless steel. Shower floor shall be fabricated from 11 gauge, type 304 stainless steel. The construction shall be **all-welded** (unitized only), exposed stainless surfaces polished to a #4 satin finish, except shower floor which shall have a non-slip glass blast finish.

Standard equipment shall include: vandal resistant shower head (NPS) mounted in a removable corner panel (plumbed to a top supply connection) and removable strainer drain with no-hub drain. Push button shall be mounted in a removable side mullion.

Drain connection shall be through removable front access cover.

Fixture shall be free-standing, no anchoring required. Unit shall require no chase area for installation and maintenance.

Underside of shower floor shall be sound deadened with fire resistant material.

**To specify Knock-Down Cabinet Shower:** select model number from the table above and use the recommended specification above omitting reference to **all-welded**.

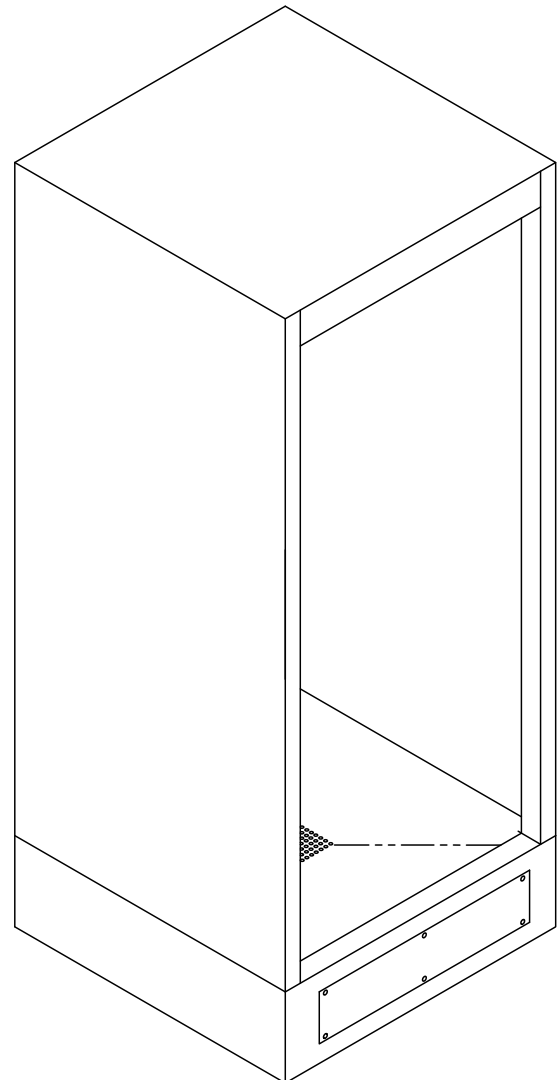
*Please provide shower finish schedule upon ordering.*

Made In The **U.S.A.**



Visit our website at <http://www.willoughby-ind.com>

2210 West Morris Street • P.O. Box 21217 • Indianapolis, IN 46221  
(317) 638-2381 • Fax: (317) 638-6110 • (800) 428-4065



# MODEL NUMBER AND OPTIONS:

## 1.) Base Model Number:

- \_\_S-3\_\_3\_\_-FA Front Access Cabinet Shower

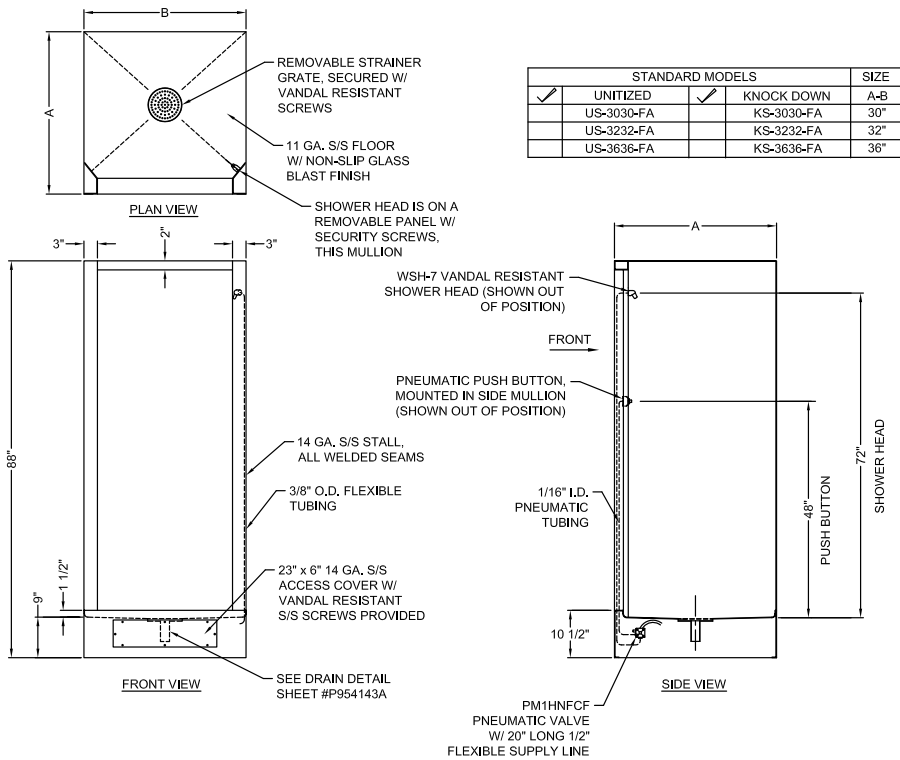
## 2.) Valve Selection:

- NV No Valve  
 PM1 Single Temp. Pneu. Metering  
 PM2 Dual Temp. Pneu. Metering  
 EL1 Single Temp. Electronic  
 EL2 Dual Temp. Electronic

## 3.) Options:

- VG Ventilation Grille (specify free area and location)  
 CP Closure Panels  
 TH1 Release Towel Hook  
 MD Modesty Door  
 SD Surface Mounted Soap Dish  
 RD Recessed Mounted Soap Dish  
 IC Inside Caulk Drain  
 CR Curtain Rod  
 ZC Z-Clip Floor Mounting  
 DR Drying Receptor  
 APS Adjustable Penal Shower Head  
 Other: \_\_\_\_\_  
 Other: \_\_\_\_\_

Drawing Approved For Manufacturing By: \_\_\_\_\_ Date: \_\_\_\_\_ Company: \_\_\_\_\_  
 Wall Thickness \_\_\_\_\_ Wall Type \_\_\_\_\_



VERIFY ALL DIMENSIONS PRIOR TO ROUGH-IN

To specify fixture and accessories, use the Model Number and Options Guide.  
 Example: To specify a front access 36" x 36" cabinet shower with single temp. pneumatic metering valve and recessed mounted soap dish. Use the following Willoughby Model Number:  
 Willoughby Model Number: US-3636-PM1-RD-FA

Made In The U.S.A.



# Willoughby Industries, Inc.