

## Cabinet Shower

✓	MODEL NUMBER	CABINET STYLE	LENGTH	WIDTH
	US-3030	UNITIZED	30"	30"
	US-3232	UNITIZED	32"	32"
	US-3636	UNITIZED	36"	36"
	KS-3030	KNOCKDOWN	30"	30"
	KS-3232	KNOCKDOWN	32"	32"
	KS-3636	KNOCKDOWN	36"	36"

### Recommended Specifications \_\_\_\_\_

Cabinet shower shall be Willoughby Model No.   S-    
(select from table above).

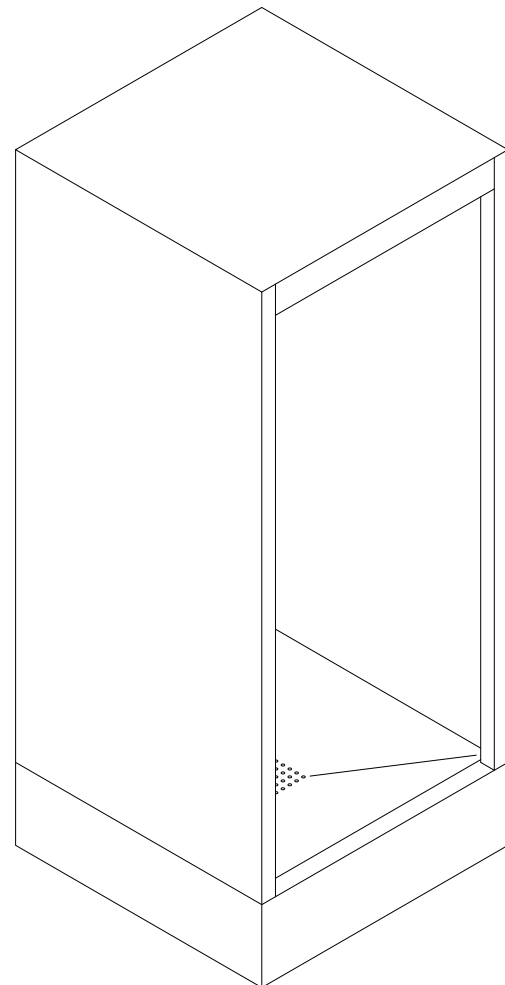
Shower cabinet shall be fabricated from 14 gauge, type 304 stainless steel. Shower floor shall be fabricated from 11 gauge, type 304 stainless steel. The construction shall be **all-welded** (unitized only), exposed stainless surfaces polished to a #4 satin finish, except shower floor which shall have a non-slip glass blast finish.

Standard equipment shall include: vandal resistant shower head (NPS) mounted in a removable corner panel (plumbed to a removable side mullion, under shower floor and to chase wall), integral strainer drain with elbow waste (2" FIP) extending to chase wall.

Fixture shall be free-standing, no anchoring required. Unit shall require chase area for installation and maintenance.

Underside of shower floor shall be sound deadened with fire resistant material.

**To specify Knock-Down Cabinet Shower:** select model number from the table above and use the recommended specification above omitting reference to **all-welded**.



*Please provide shower finish schedule upon ordering.*

*Made In The U.S.A.*



*Visit our website at <http://www.willoughby-ind.com>*

2210 West Morris Street • P.O. Box 21217 • Indianapolis, IN 46221

(317) 638-2381 • Fax: (317) 638-6110 • (800) 428-4065

# MODEL NUMBER AND OPTIONS:

**1.) Base Model Number:**

\_\_S-3\_\_3\_\_ Cabinet Shower

**2.) Valve Selection:**

- NV No Valve
- PM1 Single Temp. Pneu. Metering
- PM2 Dual Temp. Pneu. Metering
- EL1 Single Temp. Electronic
- EL2 Dual Temp. Electronic

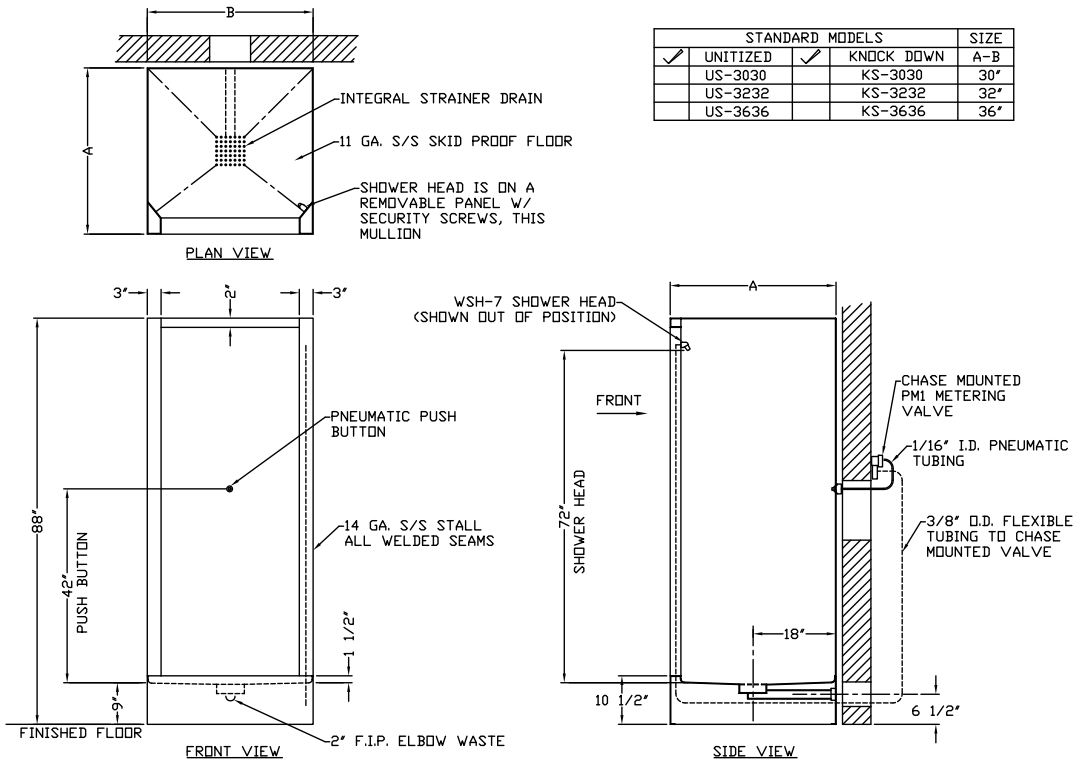
**3.) Options:**

- VG Ventilation Grille (specify free area and location)
- CP Closure Panels
- TH1 Release Towel Hook
- MD Modesty Door
- SD Surface Mounted Soap Dish
- RD Recessed Mounted Soap Dish
- PT Integral P-trap
- IC Inside Caulk Drain
- CR Curtain Rod
- ZC Z-Clip Floor Mounting
- DR Drying Receptor
- APS Adjustable Penal Shower Head

Other: \_\_\_\_\_  
 Other: \_\_\_\_\_

Drawing Approved For Manufacturing By: \_\_\_\_\_ Date: \_\_\_\_\_ Company: \_\_\_\_\_  
 Wall Thickness \_\_\_\_\_ Wall Type \_\_\_\_\_

**VERIFY ALL DIMENSIONS PRIOR TO ROUGH-IN**



STANDARD MODELS				SIZE
<input checked="" type="checkbox"/>	UNITIZED	<input checked="" type="checkbox"/>	KNOCK DOWN	A-B
	US-3030		KS-3030	30"
	US-3232		KS-3232	32"
	US-3636		KS-3636	36"

**To specify fixture and accessories, use the Model Number and Options Guide.**  
 Example: To specify a 36" x 36" cabinet shower with single temp. pneumatic metering valve and recessed mounted soap dish. Use the following Willoughby Model Number:  
 Willoughby Model Number: US-3636-PM1-RD

**Willoughby Industries, Inc.**

Made In The U.S.A.

