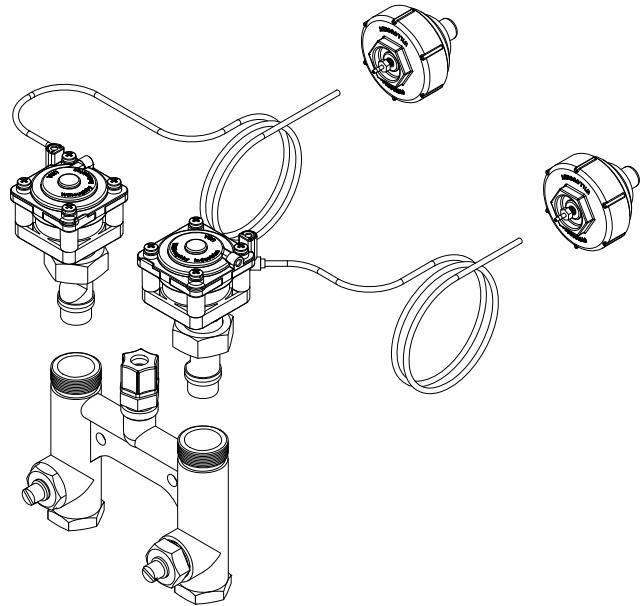




## WRMV/SCV Retrofit Valve Assembly

✓	MODEL NUMBER	PNEUMATIC VALVE ASSEMBLY DISCRIPTION
	WRMV-1	Single Temp Metering Valve
	WRSCV-1	Single Temp Self-Closing Valve
	WRMV-2	Dual Temp Metering Valve
	WRSCV-2	Dual Temp Self-Closing Valve



### Specification Discription

The Willoughby Retrofit Metering Valve (WRMV) is designed to easily convert single and/or dual temperature mechanical valve cartridges, pushrods and toggles to state-of-the-art pneumatically operated valve assemblies. Existing Willoughby WSC-1, WSC-2 (single and dual temperature mechanical self-closing) and WM-1, WM-2 (single and dual temperature mechanical metering) valve cartridges manufactured since 1985 are directly replaced with WRMV assembly kits to enable use of pneumatic metering.

The WRMV assembly kit consists of pneumatic diaphragm security pushbutton pump(s), non-hold open pneumatic metering cartridges with integral pneumatic valve, and a supply of 1/8" tubing. Traditional mechanical toggles and pushrod components are completely eliminated. The valve assembly uses the stainless steel pushbutton(s) to activate a non-hold open pneumatic metering (5-90 seconds) valve(s). The pushbutton(s) require less than 5 lbs. of force to operate.

A self-closing WRSCV-1 and WRSCV-2 version of the assembly kit is also available, featuring non-metering self closing valve operation. All kit components are the same except for the integral pneumatic valve. Operating supply water pressure range is 25-100 PSI.

### Recommended Specification

Retrofit valve assembly shall be Willoughby Model No. WR\_V\_ (select from table above). The retrofit valve assembly shall be a direct replacement for Willoughby mechanical cartridges, pushbuttons and pushrods. The valve assembly shall include pneumatic diaphragm stainless steel pushbutton pump(s) to pneumatically activate self-closing or non-hold open metering (5-90 seconds) pneumatic valve cartridge(s). 5 feet of 1/8" tubing shall be supplied with each valve.

Pushbuttons shall require less than 5 lbs. of force to operate. Vandal resistant stainless steel pushbutton(s) and keyed pushbutton escutcheon shall be non-removable from the front of the fixture. The pneumatic system shall be entirely self-contained and shall require no outside air supply. Recommended operating pressure shall be 35-70 psi. Valve(s) shall withstand pressures up to 90 psi.

Note: Some existing competitive valves may also be converted to pneumatic metering using the WRMV or WRSCV assembly kits. This may require field modification of pushbutton holes in fixture backsplash. Consult with factory for additional details.

Made In The U.S.A.



Visit our website at <http://www.willoughby-ind.com>

2210 West Morris Street • P.O. Box 21217 • Indianapolis, IN 46221

(317) 638-2381 • Fax: (317) 638-6110 • (800) 428-4065