

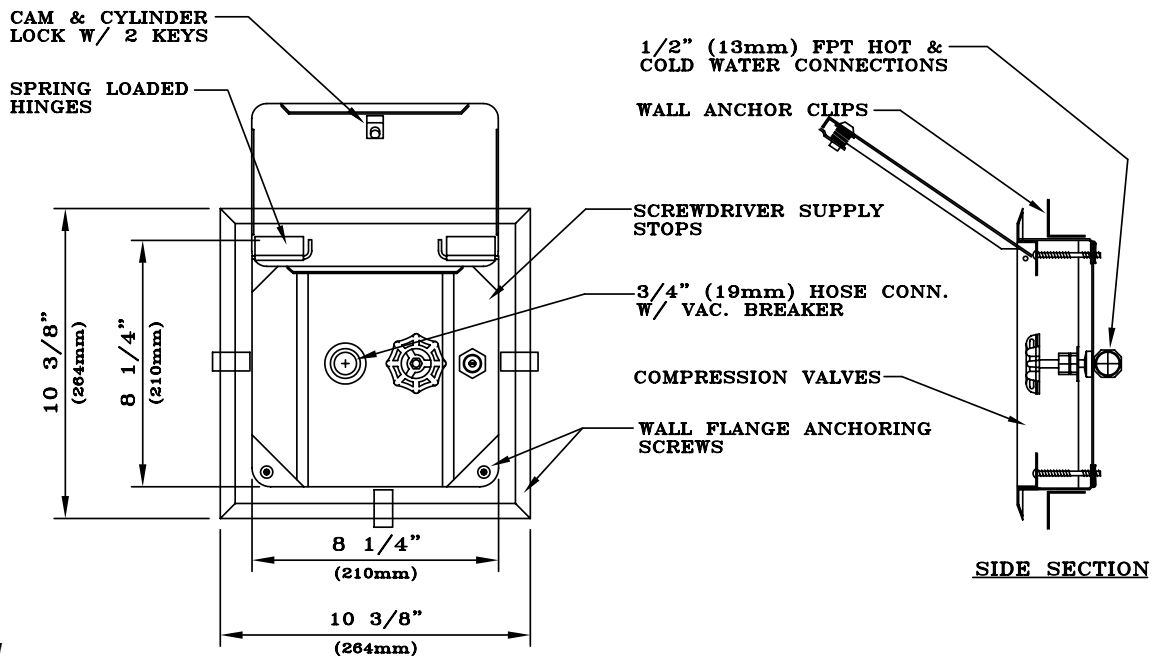
# HB Series Hose Box

✓	MODEL NUMBER	DESCRIPTION
	HB-8140	Single temperature hose box with wall flange, less door, less vacuum breaker
	HB-8141	Single temperature hose box with wall flange, less door, with vacuum breaker
	HB-8145	Dual temperature hose box with wall flange, less door, less vacuum breaker
	HB-8146	Dual temperature hose box with wall flange, less door, with vacuum breaker
	HB-8150	Single temperature hose box with wall flange, door, less vacuum breaker
	HB-8151	Single temperature hose box with wall flange, door, with vacuum breaker
	HB-8155	Dual temperature hose box with wall flange, door, less vacuum breaker
	HB-8156	Dual temperature hose box with wall flange, door, vacuum breaker
	HB-8180	Single temperature supply and waste hose box, with wall flange, less door and vacuum breaker
	HB-8181	Single temperature supply and waste hose box, with wall flange, less door, with vacuum breaker
	HB-8185	Dual temperature supply and waste hose box, with wall flange, less door and vacuum breaker
	HB-8186	Dual temperature supply and waste hose box, with wall flange, less door, with vacuum breaker

## Recommended Specifications

Hose box shall be Willoughby Model No. HB-\_\_ (select from table above).

Recessed box, wall flange and door (if applicable) shall be fabricated from type 304 stainless steel with surfaces flush to the supporting wall polished to a #4 satin finish. Standard equipment shall include 1/2" nominal brass valves and fittings and screwdriver stops on inlets. Inlets shall be 1/2" FIP and outlets 3/4" MGHT.



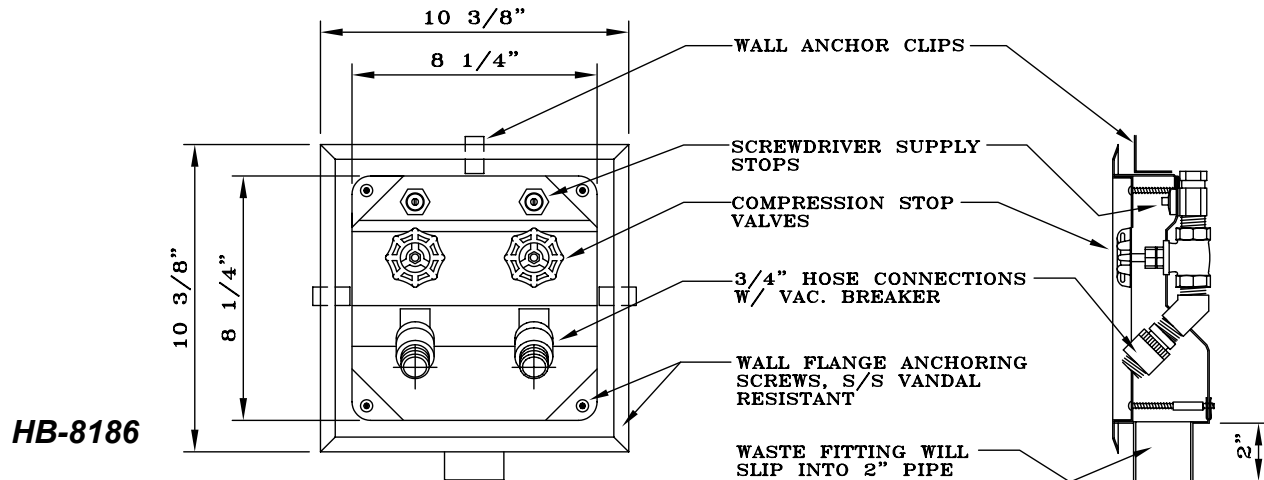
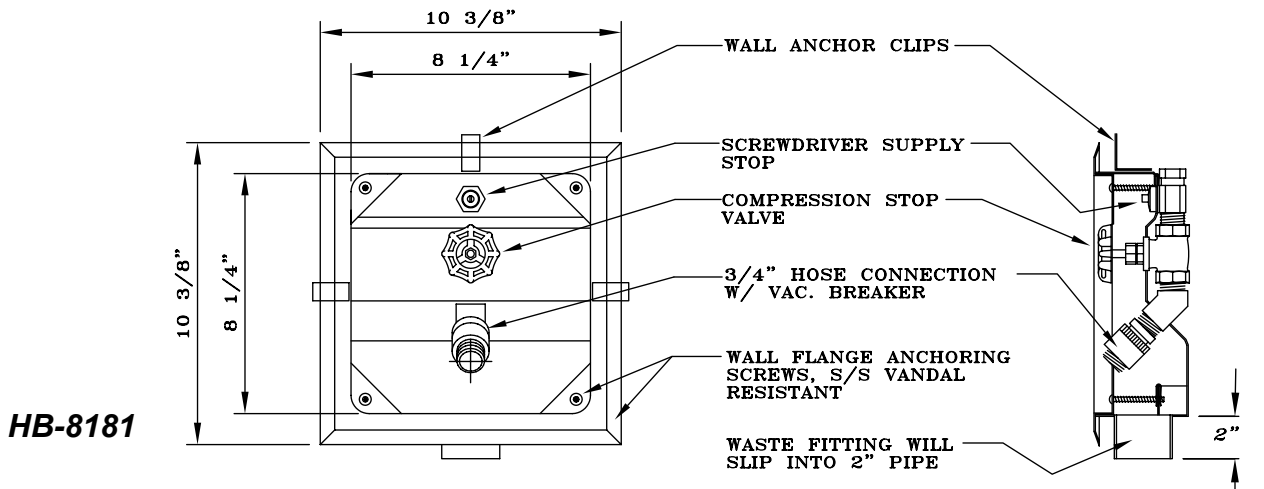
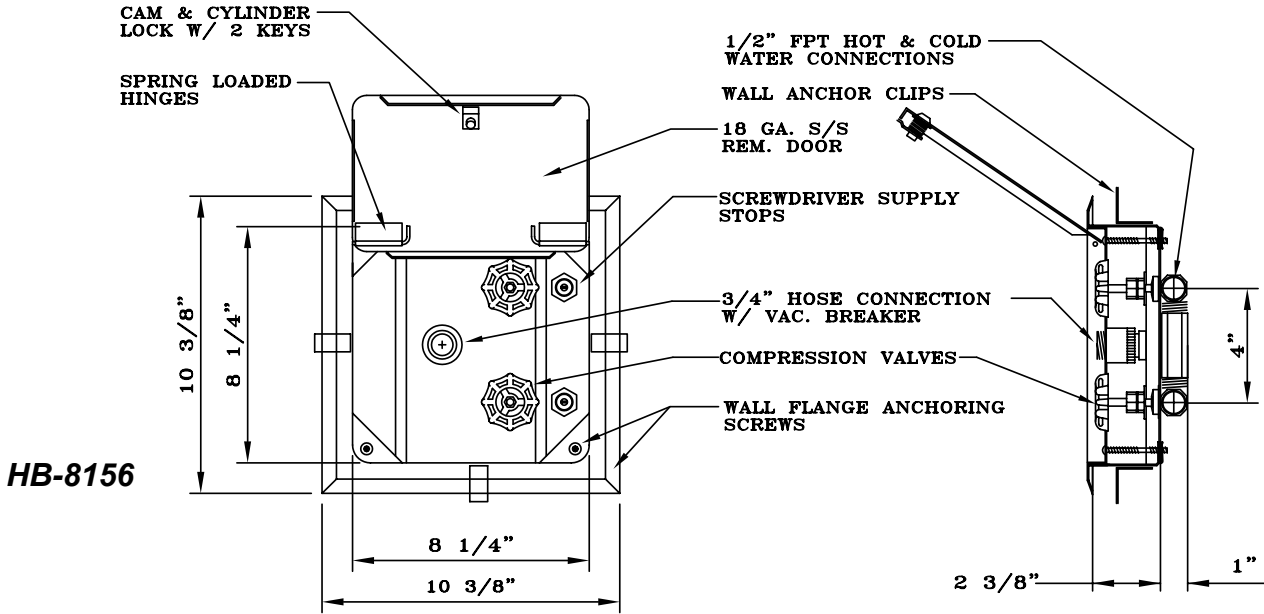
**HB-8151**

Visit our website at <http://www.willoughby-ind.com>

2210 West Morris Street • P.O. Box 21217 • Indianapolis, IN 46221

(317) 638-2381 • Fax: (317) 638-6110 • (800) 428-4065

**MODEL NUMBER AND OPTIONS:**



**Willoughby Industries, Inc.**