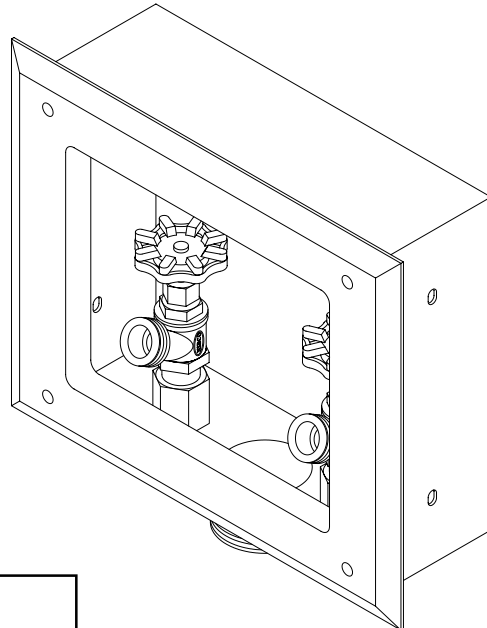


HBBD Series Hose Box w/ Boiler Drain Valve



✓	MODEL NUMBER	DESCRIPTION
	HBBD-8251	Single Temp w/ Wall Flange and Boiler Drain Valve
	HBBD-8252	Dual Temp w/ Wall Flange and Boiler Drain Valve

Recommended Specifications _____

Hose box shall be Willoughby Model HBBD-____ (select from table above).

Recessed box and wall flange shall be fabricated from type 304 stainless steel with surfaces flush to the supporting wall polished to a #4 satin finish. Standard equipment shall include 1/2" brass boiler drain valve(s) and a 2" MIP drain. Inlets shall be 1/2" MIP and outlets shall be 3/4" MGHT.

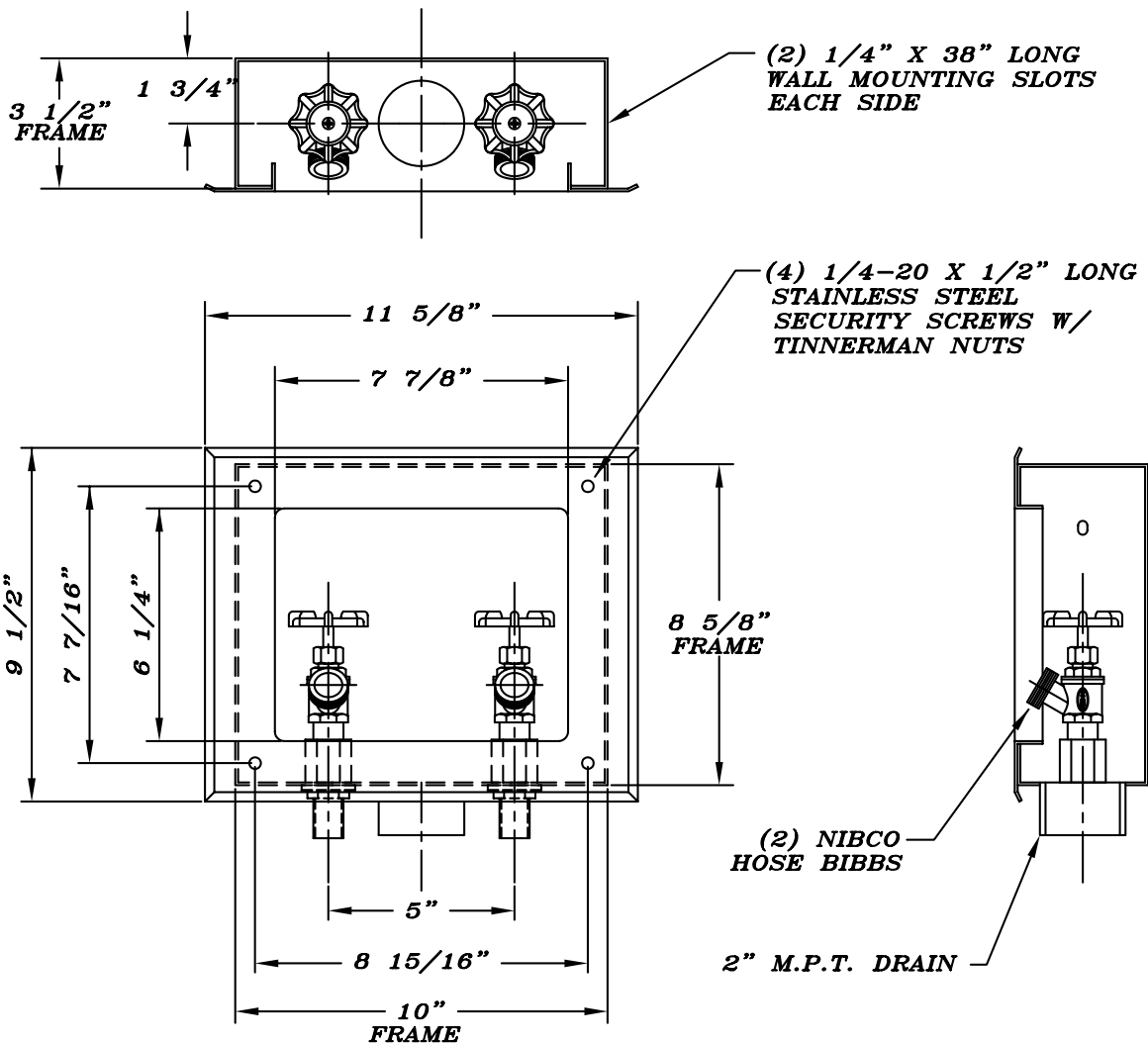
Visit our website at <http://www.willoughby-ind.com>

2210 West Morris Street • P.O. Box 21217 • Indianapolis, IN 46221

(317) 638-2381 • Fax: (317) 638-6110 • (800) 428-4065

MODEL NUMBER AND OPTIONS:

Drawing Approved For Manufacturing By: _____ Date: _____ Company: _____
 Wall Thickness: _____ Wall Type: _____



Willoughby Industries, Inc.