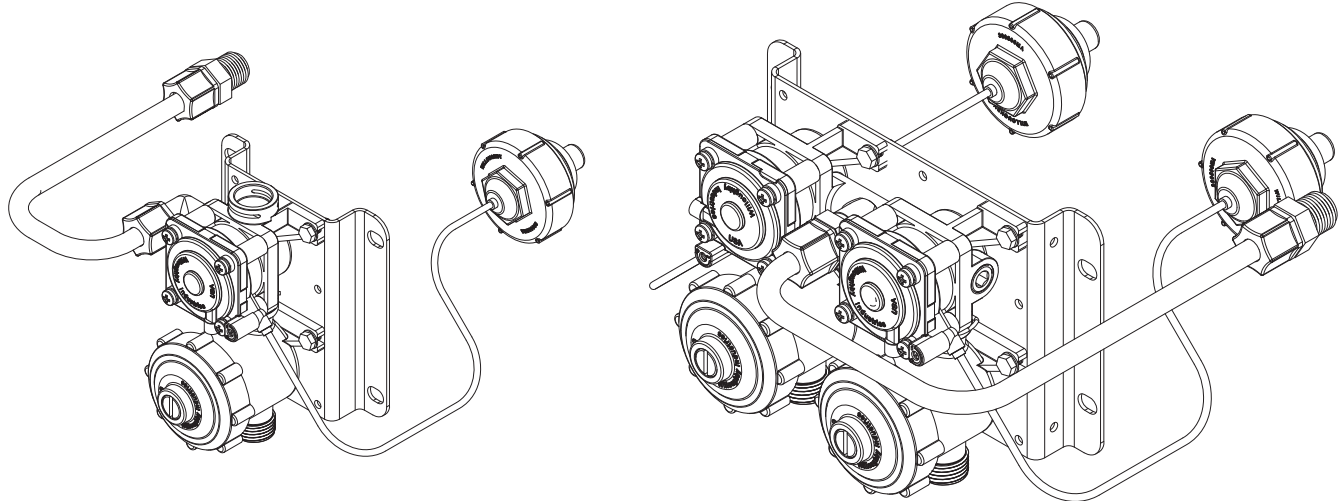


**WILLOUGHBY
LEAD-FREE
VALVE ASSEMBLIES**



**INSTALLATION AND
OPERATION MANUAL**



MODELS:

PML1 and PML2

Lead-free Pneumatic Metering Valve Assemblies (Plastic Bodied)

TABLE OF CONTENTS

PRE-INSTALLATION INFORMATION.....	3	CARE AND MAINTENANCE	
PNEUMATIC METERING VALVE OPERATION	4	Cleaning Instructions	14
PHYSICAL DIMENSIONS		TROUBLESHOOTING.....	15
PML11 Valve Breakdown	6	DETAIL DRAWINGS.....	
PML12 Manifold Valve Breakdown.....	7	Valve Assembly	P/N: 980406L..... 16
PML21 Valve Breakdown	8	Valve Assembly	P/N: 980406PL 17
PML22 Manifold Valve Breakdown.....	9	Valve Assembly	P/N: 980406R 18
CHECKING CONTENTS.....	10	Valve Assembly	P/N: 980406PR..... 19
INSTALLATION INSTRUCTIONS		Valve Assembly	P/N: 980407 20
Pneumatic Metering Valve Assembly.....	11	Checkstop Assembly	P/N: 980183 21
Adjusting Valve Cycle Time	12	Push Button Assembly	P/N: 600307 22
Jaco Fitting Instructions.....	13	Push Button Assembly	P/N: 600306 23
		Push Button Assembly	P/N: 600311 24
		WARRANTY.....	25



WILLOUGHBY Industries, Inc.

5105 WEST 78TH STREET / INDIANAPOLIS, IN 46268

TOLL FREE (800) 428-4065 / LOCAL (317) 875-0830 / FAX (317) 875-0837



(PAGE LEFT INTENTIONALLY BLANK)

PRE-INSTALLATION INFORMATION

INSTALLATION NOTICE!

CHECK ROUGH-IN LOCATIONS **PRIOR** TO INSTALLATION

FLUSH LINES THOROUGHLY **PRIOR** TO HOOK-UP

When installing **Willoughby Industries' PML1 or PML2 Lead-free Pneumatic Metering Valves:**

BEFORE Step 1 of the installation instructions, ensure that all relevant plumbing rough-ins are in their correct locations.

The valve assembly, including the spray head, **MUST NOT BE** connected until *after* all lines have been flushed to remove the small particles of debris that are inherent with new construction projects and all chemicals that are used in flushing are purged from the system.

Chemicals used in flushing plumbing systems can attack the internal components of the valve and spray head and severely damage them, so any flushing of the system must be followed by a full flushing with pure water to clear any harsh chemicals remaining in the system. Debris in the system if allowed to enter the valve assembly and spray head can cause poor performance or outright failure.

Again **DO NOT** attempt to connect the valve assembly and spray head until *after* all flushing is complete and pure water is the only media that will be passing through the system. Damage to the valve assembly or spray head caused by harsh chemicals or debris will not be covered by the manufacturer's warranty.

INSTALLATION NOTICE!

CHECK ROUGH-IN LOCATIONS **PRIOR** TO INSTALLATION

FLUSH LINES THOROUGHLY **PRIOR** TO HOOK-UP

VALVE OPERATION

PNEUMATIC METERING VALVE ASSEMBLIES

The Willoughby Pneumatic Valve Assembly is designed as a vacuum-operated, pilot orifice, metering water valve. This type of valve is used for lavatories, shower fixtures, wash fountains, and several other fixtures.

By virtue of its design, a pneumatic valve is non-hold open. The operating sequence of the valve begins with pressing the push button. This action expels system air out to the atmosphere through a check valve incorporated into the upper chamber of the valve motor. The water is not running at this point and will not run unless a vacuum is present in the system. Anytime the push button is pressed the system pressure will return to atmospheric even if a vacuum was present while the valve was metering. This aspect of the valve operation insures that the valve can never be forced to run continuously.

A pilot orifice valve uses the water pressure in the line to assist in opening and closing the valve. In this case the pilot orifice extends through the center of the diaphragm guide and is opened and closed by a rubber bumper molded onto a stainless steel disk. The bypass orifice is molded in the edge of the diaphragm. Both of these orifices must be clear for the valve to function properly.

After the air has been expelled from the system and a vacuum created by releasing the push button, the vacuum pulls the magnet assembly downward towards the stainless steel separator cup. As the magnet moves closer to the cup, the magnetic force passes through the cup and lifts the disk off of the water diaphragm. With the pilot orifice uncovered, line pressure lifts the diaphragm and water flows through the valve. The valve continues to run as long as a vacuum is present in the system, but the vacuum is constantly being bled off through the adjustable timing control.

When the timing cycle is over and most of the vacuum is gone, the magnet moves away from the cup and the magnetic field weakens sufficiently for the disk to drop back down onto the water diaphragm. At this point water passes through the bleed orifice, pressurizes the area above the diaphragm and causes it to close down on the valve seat.

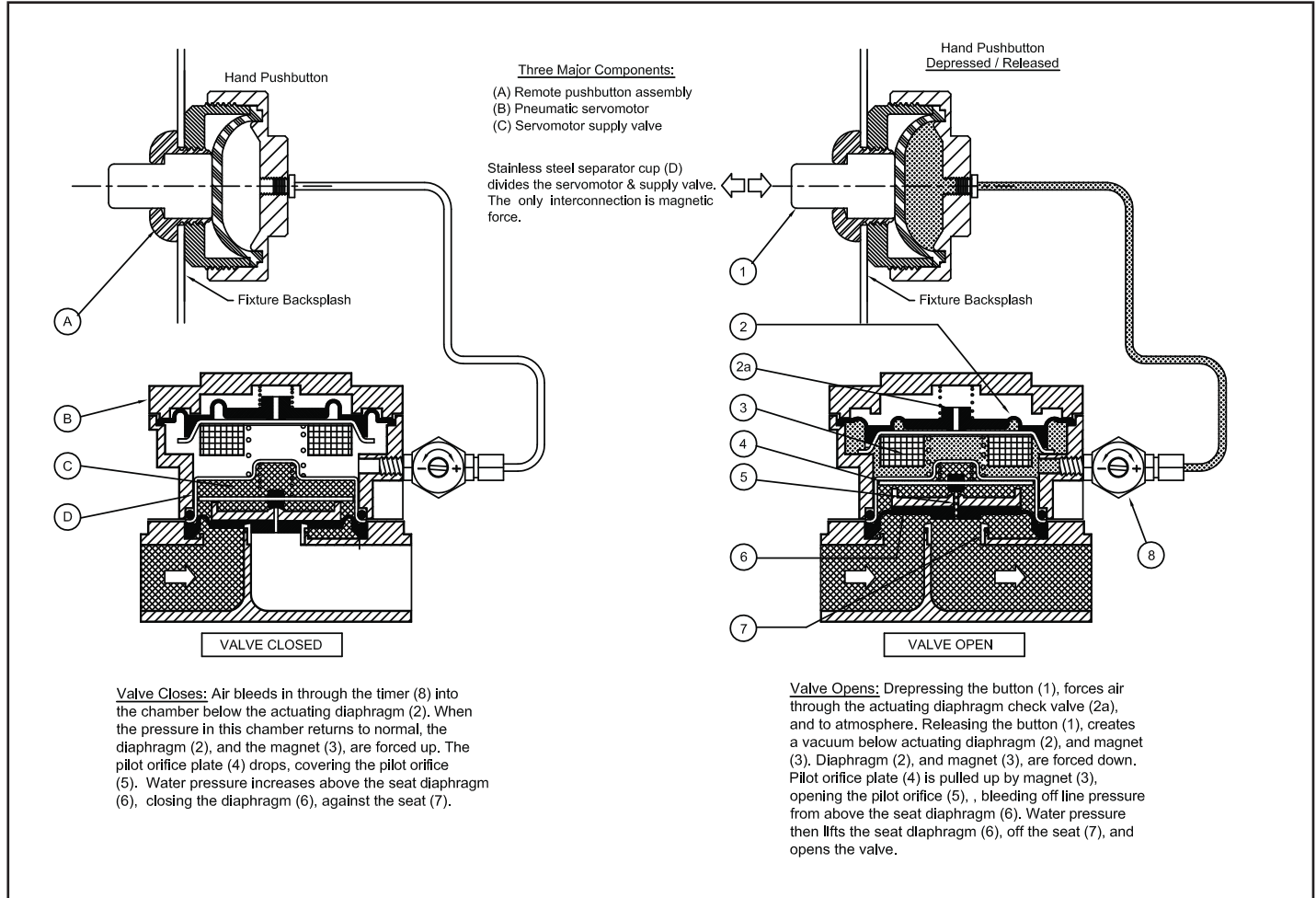
A strainer/checkstop is an integral part of the valve assembly and provides a means of shutting off the water if the valve needs servicing. A check valve in the checkstop eliminates cross flow of hot or cold water into the opposite supply line. A fine mesh stainless steel strainer keeps normal line debris from interfering with the mechanical components of the valve.

If the pneumatic valve drips after shutting off and the seat and diaphragm have smooth sealing surfaces, a PVK-2 diaphragm assembly kit should be installed.

If the pneumatic valve does not open and the problem is not in the pneumatic pump or tubing, a PVK-1 valve body assembly kit should be installed.

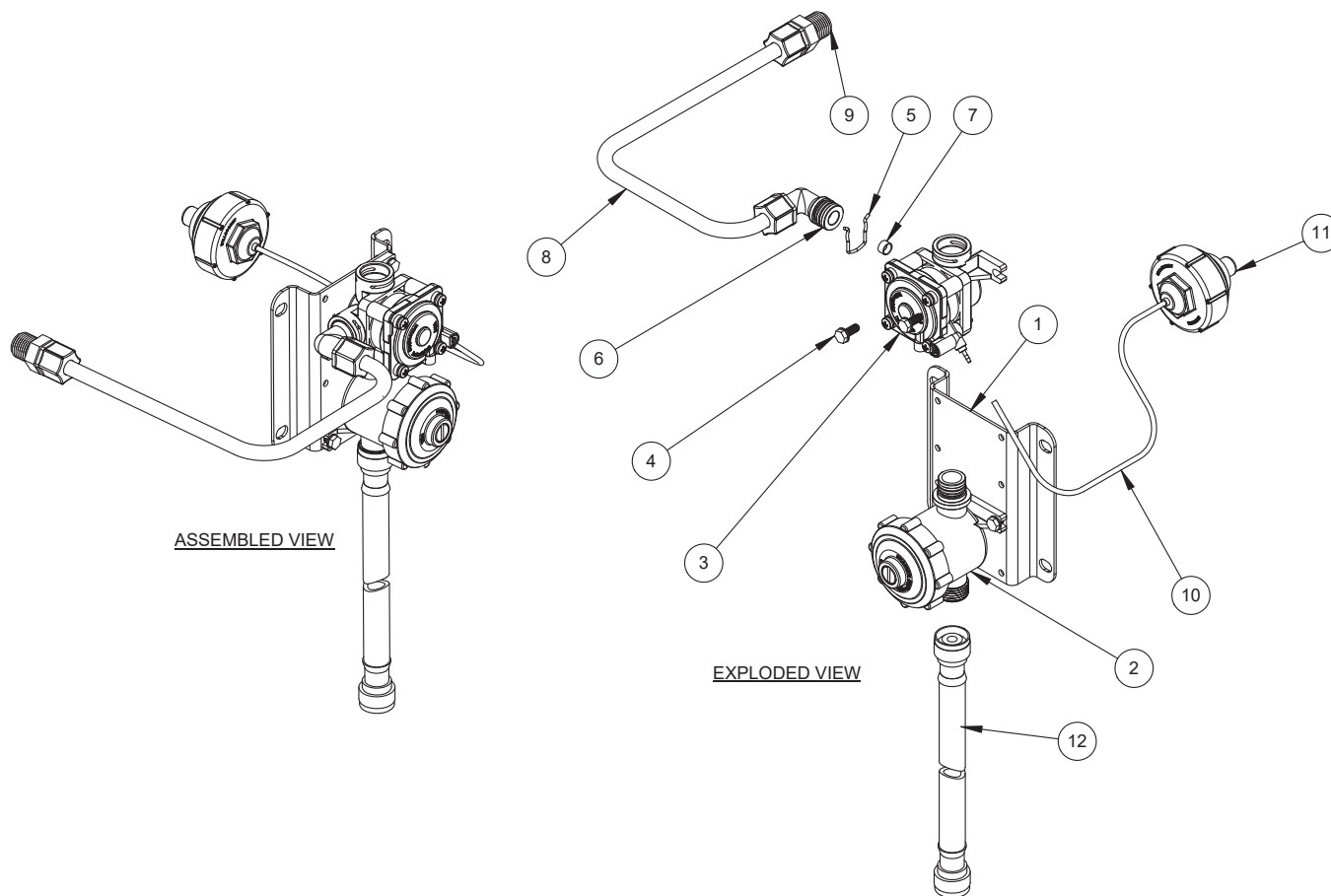
VALVE OPERATION (Continued)

OPERATIONAL DIAGRAMS



PHYSICAL DIMENSIONS

PML11 VALVE BREAKDOWN / EXPLODED VIEW



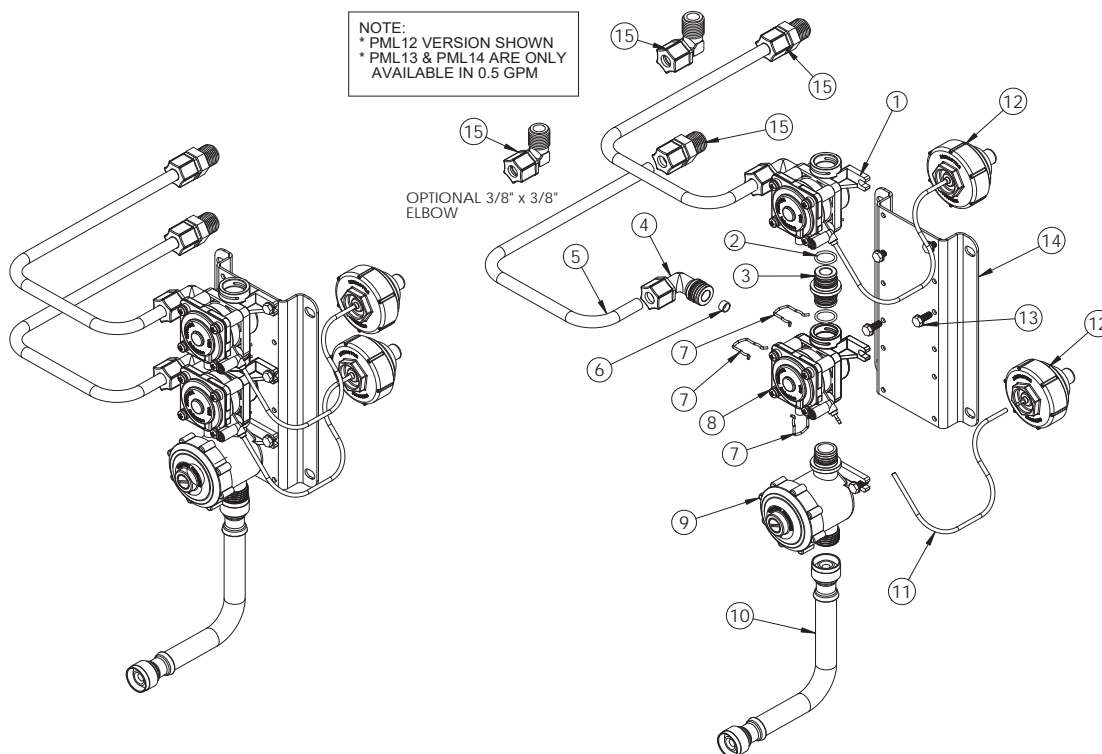
ITEM NO.	PART #	DESCRIPTION	QTY
1	980501	PM1 VALVE BRACKET	1
2	980183	CHECKSTOP ASSEMBLY	1
3	980406PL	PNEUMATIC METERING VALVE ASSY - LEFT PLUGGED	1
4	800133	#10-16 SELF TAP TYPE B HEX HEAD SCREW	4
5	980140	SPRING CLIP	2
6	980600A	VALVE FITTING ASSY, 3/8" ELBOW	1
7	380138	FLOW REGULATOR 0.5 GPM (MR03 RED)	1
8	600523	FLEXIBLE TUBING 3/8"OD X 1/4"ID	1
9	320566	CONNECTOR 3/8" TUBE X 3/8" MPT	1
10	600470	PNEUMATIC TUBING 1/16"ID (RED)	1
11	600307	PNEUMATIC PUSH BUTTON	1
12	980506	6" FLEX HOSE, 1/2" FIP CONNECTION	1

PML11 IS AVAILABLE WITH NO FLOW CONTROL

PHYSICAL DIMENSIONS (Continued)



PML12 MANIFOLD VALVE BREAKDOWN / EXPLODED VIEW



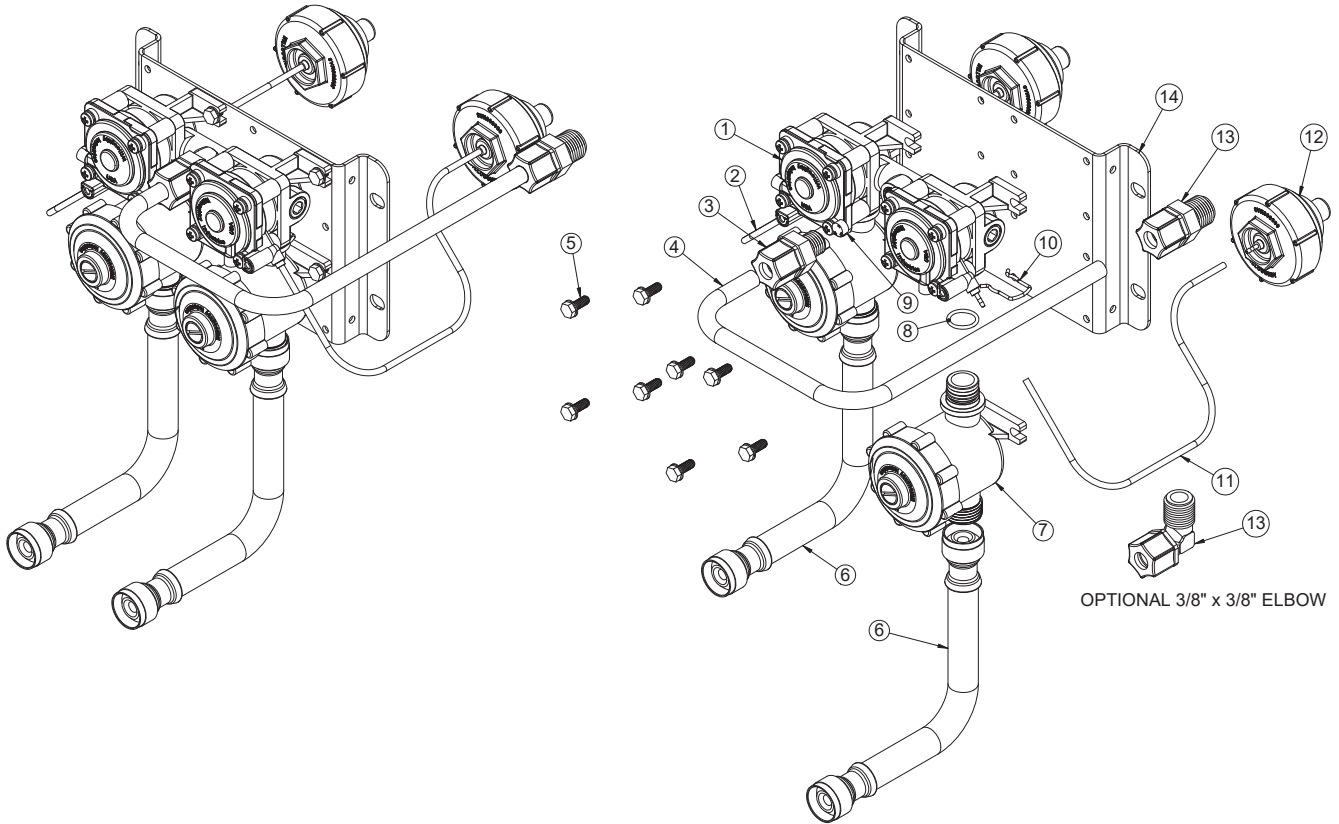
ITEM NO.	PART #	DESCRIPTION	PML12	PML13	PML14
1	980406PL	PNEUMATIC VALVE ASSEMBLY, LEFT-PLUGGED PORT	1	1	1
2	980164	'O'-RING, #015	2	5	8
3	980197	PLASTIC VALVE COUPLING	1	2	3
4	980600A	VALVE FITTING ASSEMBLY, 3/8" ELBOW	2	3	4
5	600523	FLEXIBLE TUBING, 3/8" (10mm) O.D. 20 FT. TOTAL	PER FOOT	PER FOOT	PER FOOT
6	380138	FLOW CONTROL 0.5 GPM (RED)	2	3	4
7	980140	SPRING CLIP	5	8	11
8	980406L	PNEUMATIC VALVE ASSEMBLY	1	2	3
9	980183	CHECKSTOP ASSEMBLY	1	1	1
10	980506	(OPTIONAL) 6" STAINLESS STEEL FLEX HOSE	1	1	1
10	980520	(OPTIONAL) 20" STAINLESS STEEL FLEX HOSE	1	1	1
11	600470	PNEUMATIC TUBING, 1/16" I.D. x 1/8" O.D. (RED)	PER FOOT	PER FOOT	PER FOOT
12	600307	(STANDARD) PNEUMATIC PUSH BUTTON	2	3	4
12	600306	(OPTIONAL) LIGATURE-RESISTANT PNEUMATIC PUSH BUTTON	2	3	4
12	600311	(OPTIONAL) PALM PNEUMATIC PUSH BUTTON	2	3	4
13	800133	#10-16 SELF TAP TYPE B HEX HEAD SCREW	6	8	10
14	9805012	PM1-MA2 VALVE BRACKET-PLASTIC	1	N/A	N/A
14	9805013	PM1-MA3 VALVE BRACKET-PLASTIC	N/A	1	N/A
14	9805014	PM1-MA4 VALVE BRACKET-PLASTIC	N/A	N/A	1
15	320566	(OPTIONAL) CONNECTOR, 3/8" TUBE x 3/8" MPT	2	3	4
15	320577	(OPTIONAL) ELBOW, 3/8" TUBE x 3/8" MPT	2	3	4

PML12 IS AVAILABLE WITH NO FLOW CONTROL



PHYSICAL DIMENSIONS

PML21 VALVE BREAKDOWN / EXPLODED VIEW

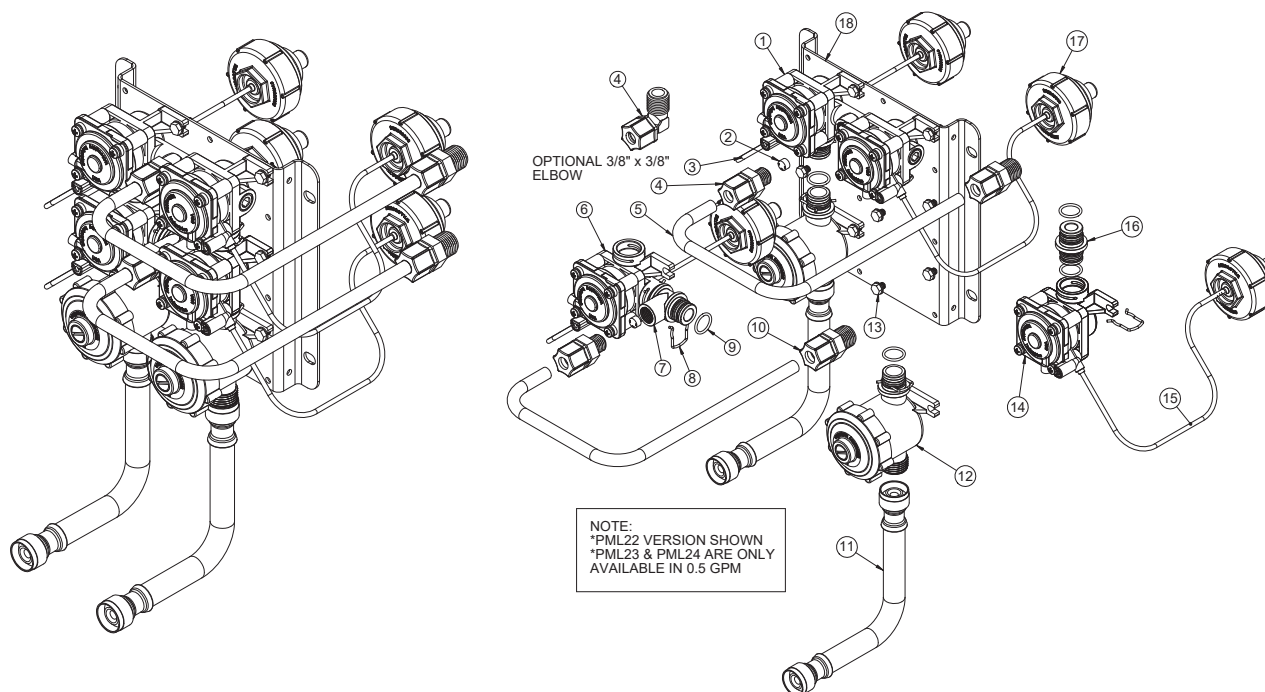


OPTIONAL 3/8" x 3/8" ELBOW

ITEM NO.	PART #	DESCRIPTION	QTY
1	980407	PML2 VALVE ASSEMBLY	1
2	600470	PNEUMATIC TUBING, 1/16" I.D. (RED)	PER FOOT
3	321010	CONNECTOR, 3/8" TUBE x 1/4" MPT	1
4	600523	FLEXIBLE TUBING 3/8" (10mm) O.D.	PER FOOT
5	800133	#10-16 SELF TAP TYPE B HEX HEAD SCREW	8
6	980506	(OPTIONAL) 6" STAINLESS STEEL FLEX HOSE	2
6	980520	(OPTIONAL) 20" STAINLESS STEEL FLEX HOSE	2
7	980183	CHECKSTOP ASSEMBLY	2
8	980164	'O'-RING, #015	2
9	380138	FLOW CONTROL 0.5 GPM (RED)	1
10	980140	SPRING CLIP	2
11	600475	PNEUMATIC TUBING, 1/16" I.D. x 1/8" O.D. (BLUE)	1
12	600307	(STANDARD) PNEUMATIC PUSH BUTTON	2
12	600306	(OPTIONAL) LIGATURE-RESISTANT PNEUMATIC PUSH BUTTON	2
12	600311	(OPTIONAL) PALM PNEUMATIC PUSH BUTTON	2
13	320566	(OPTIONAL) CONNECTOR, 3/8" TUBE x 3/8" MPT	1
13	320577	(OPTIONAL) ELBOW, 3/8" TUBE x 3/8" MPT	1
14	980502	PM2 VALVE BRACKET-PLASTIC	1

PHYSICAL DIMENSIONS (Continued)

PML22 MANIFOLD VALVE BREAKDOWN / EXPLODED VIEW



NOTE:
*PML22 VERSION SHOWN
*PML23 & PML24 ARE ONLY
AVAILABLE IN 0.5 GPM

ITEM NO.	PART #	DESCRIPTION	PML12	PML13	PML14
1	980407	PML2 VALVE ASSEMBLY	1	1	1
2	380138	FLOW CONTROL 0.5 GPM (RED)	2	3	4
3	600470	PNEUMATIC TUBING, 1/16" I.D. (RED)	PER FOOT	PER FOOT	PER FOOT
4	321010	CONNECTOR, 3/8" TUBE x 1/4" MPT	2	3	4
5	600523	FLEXIBLE TUBING 3/8" (10mm) O.D. 20 FT. TOTAL	PER FOOT	PER FOOT	PER FOOT
6	980406R	PNEUMATIC VALVE ASSEMBLY	1	2	3
7	980196	PLASTIC VALVE 'T'	1	2	3
8	980140	SPRING CLIP	8	14	20
9	980164	'O'-RING #015	8	14	20
10	320566	(OPTIONAL) CONNECTOR, 3/8" TUBE x 3/8" MPT	2	3	4
10	320577	(OPTIONAL) ELBOW, 3/8" TUBE x 3/8" MPT	2	3	4
11	980506	(OPTIONAL) 6" STAINLESS STEEL FLEX HOSE	2	2	2
11	980520	(OPTIONAL) 20" STAINLESS STEEL FLEX HOSE	2	2	2
12	980183	CHECKSTOP ASSEMBLY	2	2	2
13	800133	#10-16 SELF TAP TYPE B HEX HEAD SCREW	12	16	20
14	980406L	PNEUMATIC VALVE ASSEMBLY	1	2	3
15	600475	PNEUMATIC TUBING, 1/16" I.D. x 1/8" O.D. (BLUE)	PER FOOT	PER FOOT	PER FOOT
16	980197	PLASTIC VALVE COUPLING	2	4	6
17	600307	(STANDARD) PNEUMATIC PUSH BUTTON	4	6	8
17	600306	(OPTIONAL) LIGATURE-RESISTANT PNEUMATIC PUSH BUTTON	4	6	8
17	600311	(OPTIONAL) PALM PNEUMATIC PUSH BUTTON	4	6	8
18	9805022	PML22 VALVE MOUNTING BRACKET	1	N/A	N/A
18	9805023	PML23 VALVE MOUNTING BRACKET	N/A	1	N/A
18	9805024	PML24 VALVE MOUNTING BRACKET	N/A	N/A	1

CHECK CONTENTS

- Separate all parts from packaging and make sure all parts are accounted for before discarding any packaging material. If any parts are missing, do not attempt to install PML1 or PML2 Lead-free Pneumatic Metering Valves until you obtain the missing parts.

NOTE: Before beginning installation, all supply, drain and waste piping for the PML1 or PML2 Lead-free Pneumatic Metering Valves must be completed according to specified rough-ins. If you have not received rough-in details, please contact Willoughby Industries, Inc. (800) 428-4065

IMPORTANT: Flush all the water supply lines before making connections.

INSTALLATION INSTRUCTIONS

PNEUMATIC METERING VALVE ASSEMBLY

- (1) Clear and flush all valve assembly supply lines.
- (2) Clear any debris from all plastic tubing using only air; **DO NOT USE WATER.**
- (3) Mount the valve assembly at any convenient location, making sure all plastic tubing will reach between valves and the filler/bubblers or shower heads. Typical maximum distance is 120" from the valve assembly to the fixture.
- (4) Make sure all checkstop assembly on the valve assembly are in the closed position, then attach the water supplies to the valve assembly inlets on each hot or cold water checkstop (either directly or by using an optional manufacturer-provided, stainless steel flex hose).
- (5) Install all push button assemblies, filler/bubblers, or shower heads through the pre-punched holes on the appropriate fixture backsplashes and control panels. Repeat as necessary.
- (6) Thread a 3/8" M.P.T. x (1/4" or 3/8") I.D. COMP. plastic adapter into the rear threading of each filler/bubbler or shower head. Repeat as necessary.
- (7) Insert one end of (1/4" or 3/8") O.D. plastic tubing into the (1/4" or 3/8") I.D. COMP. side of the adapter on each filler/bubbler or shower head. Then insert the other end of the plastic tubing into the (1/4" or 3/8") I.D. COMP. adapter on the valve assembly corresponding to the appropriate filler/bubbler or shower head. Repeat as necessary.
- (8) Taking care to avoid kinking, gently push one end of 1/16" O.D. pneumatic tubing onto the pneumatic tubing barb on the water valve assembly corresponding to the appropriate filler/bubbler or shower head. Then push the other end of the pneumatic tubing onto the pneumatic barb on the back of the correct push button assembly.
Take care to avoid connecting hot water valves to cold water push buttons, connecting the push buttons for the "Bubbler A" valve to the "Bubbler B" valve instead, etc. Repeat as necessary.
- (9) Open all water supply stops and checkstop valves and check for water leaks.
- (10) Actuate, hold, and release push buttons several times to check that water lines and valves are purged of trapped air and to ensure consistent flow at all locations. Adjust valve cycle times if needed. Complete a final check for leaks and other possible issues at all connections before completing the installation.

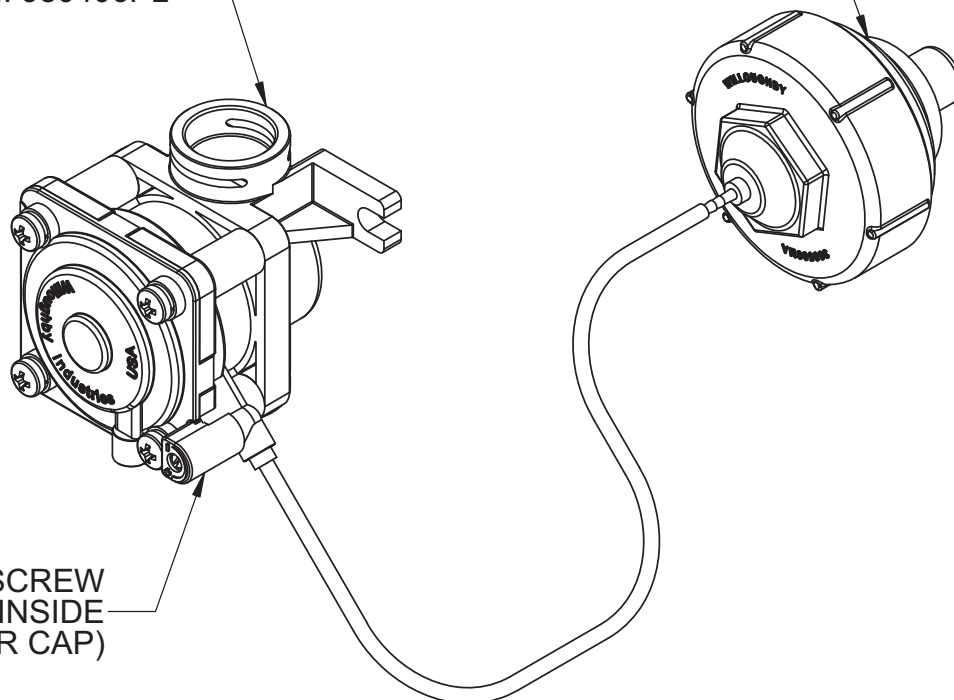
INSTALLATION INSTRUCTIONS (Continued)

ADJUSTING PNEUMATIC METERING VALVE CYCLE TIME

METERING PNEUMATIC
VALVE ASSEMBLY,
P/N: 980406PL

STANDARD PNEUMATIC
PUSH BUTTON, P/N:600307

ADJUSTING SCREW
(LOCATED INSIDE
BLACK FILTER CAP)



ADJUSTING THE VALVE TIMING:

- ADJUST HOT & COLD WATER VALVE CYCLE TIME BY PRESSING PUSH BUTTON AND RELEASING TO START TIMED FLOW.
- TURN METERING VALVE ADJUSTING SCREW COUNTER-CLOCKWISE (-) TO SHORTEN CYCLE TIME (MIN. 5 SECONDS).
- OR
- TURN METERING VALVE ADJUSTING SCREW CLOCKWISE (+) TO LENGTHEN CYCLE TIME (MAX. 90 SECONDS).

NOTE: IF VALVE RUNS CONTINUOUSLY:

1. RUN-IN THE ADJUSTING SCREW UNTIL IT STOPS.
(DO NOT OVER-TIGHTEN THE ADJUSTING SCREW)
2. BACK-OFF THE ADJUSTING SCREW UNTIL IT IS FLUSH WITH THE TOP OF THE FILTER CAP.
3. IF VALVE SHUTS-OFF, FOLLOW INSTRUCTIONS ABOVE TO SET THE VALVE TO THE DESIRED RUN-TIME.

INSTALLATION INSTRUCTIONS (Continued)

JACO FITTING INSTRUCTIONS

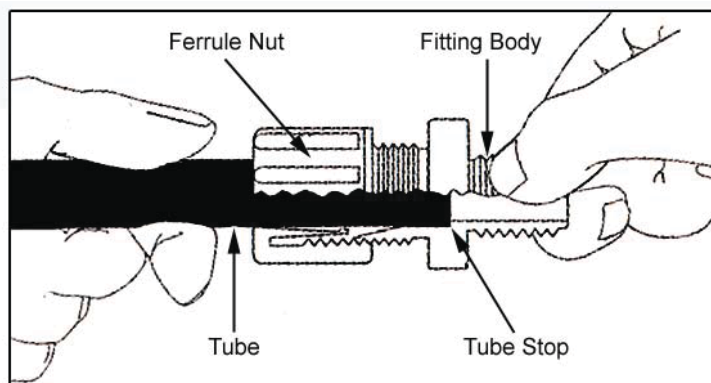
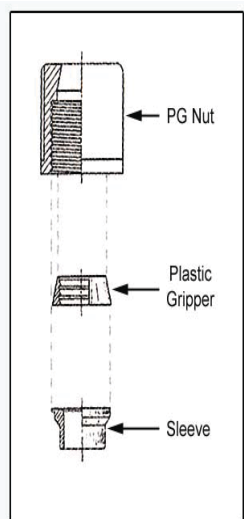


Note: It is not necessary to disassemble this fitting for application. Merely insert tubing to stop and tighten seal.

1. Cut tubing end squarely and remove the internal burrs.
2. Insert the tubing through the back of the nut all the way through the nut assembly to the tube stop in the fitting body (see illustration). If the tubing does not enter the nut easily, loosen the nut one turn and reinsert the tubing all the way to the tube stop in the fitting body.
3. Turn the nut hand tight.
4. Wrench tighten the nut 1½ - 2 turns.
5. All nuts must be retightened when the system reaches projected operating temperature.

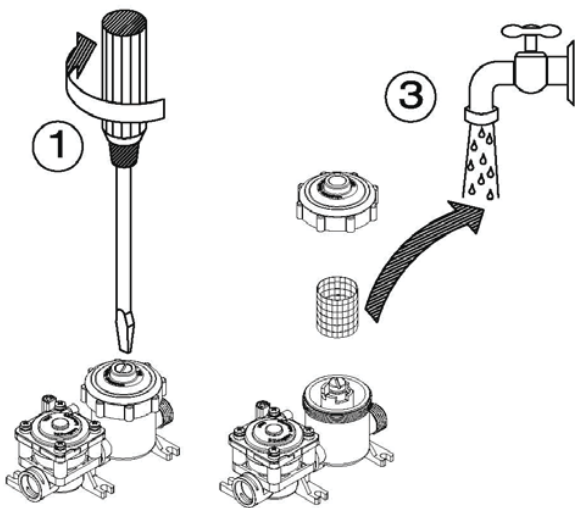
Note: To ensure proper assembly, tubing MUST be fully inserted into the fitting body all the way to the tube stop.

Note: Squeaking sound when tightening nut is normal. For pipe threaded connections, Teflon tape must be used.



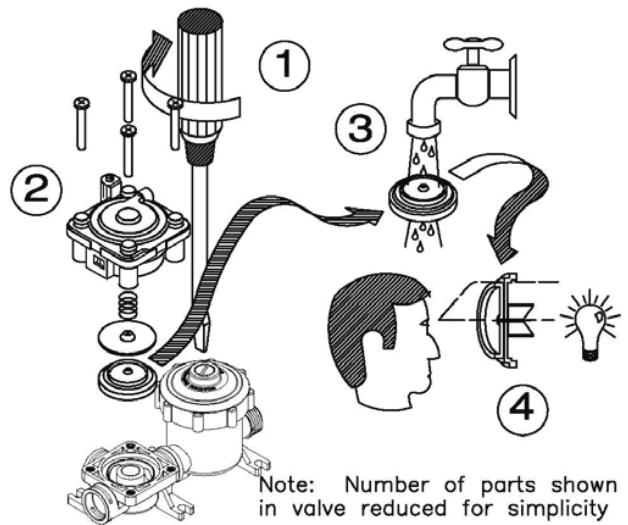
CARE AND MAINTENANCE

PNEUMATIC METERING VALVE CLEANING INSTRUCTIONS



To clean strainer:

1. Close stop
2. Remove strainer cap & strainer
3. Rinse strainer



To clean valve:

1. Close stop
2. Carefully remove valve motor
3. Wash water side diaphragm
4. Check for unobstructed diaphragm openings (2)

NOTE: DO NOT disassemble air side (top) of valve motor



Willoughby Industries, Inc.
Phone: (317) 638-2381

TROUBLESHOOTING

PNEUMATIC METERING VALVE ASSEMBLIES

VALVE WILL NOT OPEN OR DELIVER WATER:

- (1) Check the plastic tubing that runs from the push button actuator to the pneumatic valve for air leaks.
- (2) Make sure the checkstop on the supply to the valve is fully open. Do not partially close the checkstop for any reason as it is not a throttling or flow-reducing valve. The checkstop should either be fully open (normal operation) or fully closed (when servicing the valve).
- (3) Close checkstop and then inspect the strainer in the supply line (installed after the checkstop) to make sure the strainer is not blocked or partially blocked prohibiting water flow.
- (4) Close checkstop and then inspect the flow control insert in the valve outlet (installed after the checkstop) to make sure it is not damaged, deformed, or clogged, limiting water flow to less than the specified flow rate.

VALVE WILL NOT SHUT OFF:

- (1) Separate valve motor from casting by removing the four (4) # 8 screws.
- (2) Inspect the water diaphragm assembly to see if bypass hole in diaphragm is blocked. Remove any debris by blowing on diaphragm or using force of air. Do not use any tool (such as straight pin) to remove any debris. Enlarging the hole can cause erratic operation.
- (3) Check the metering screw on the timer assembly to make sure the adjustment screw is not closed too tightly. To reset, back out adjustment screw (counterclockwise) about 1-1/2 turns, and adjust for desired cycle.

VALVE CONTINUES TO TRICKLE WATER AFTER PUSH BUTTON IS RELEASED:

- (1) Inspect seating area on valve base to make sure no debris, pitting or scoring is present.
- (2) Clean seat or replace seat as necessary.
- (3) Inspect seating area of diaphragm for debris, clean as necessary. If debris has caused permanent indentations in the rubber, it may have to be replaced.

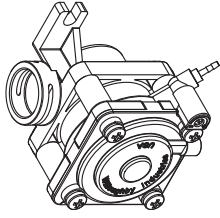
DRAWING: VALVE ASSEMBLY DETAIL

ITEM #	PART #	DESCRIPTION	QTY.
1	980420	SINGLE TEMP BASE w/INSERTS (ALL PORTS OPEN)	1
2	980305	WATER SIDE DIAPHRAGM/ADAPTOR ASSY.	1
3	980310	WATER SIDE DISK ASSEMBLY	1
4	980136	SPRING, WATER SIDE DIAPHRAGM	1
5	980126	BARRIER CUP	1
6	980127	O-RING M1.5x32 BUNA-70	1
7	980410	METERING VALVE BODY ASSEMBLY	1
8	980135	SPRING, AIR SIDE MAGNET	1
9	980405	METERING VALVE MAGNET/CUP ASSEMBLY	1
10	980130	DIAPHRAGM, AIR SIDE, PNEUMATIC METERING VALVE	1
11	980134	AIR SIDE SPRING	1
12	380801M	AIR SIDE TOP COVER	1
13	980001A	#8-32 x 1 1/4" SCREW	4

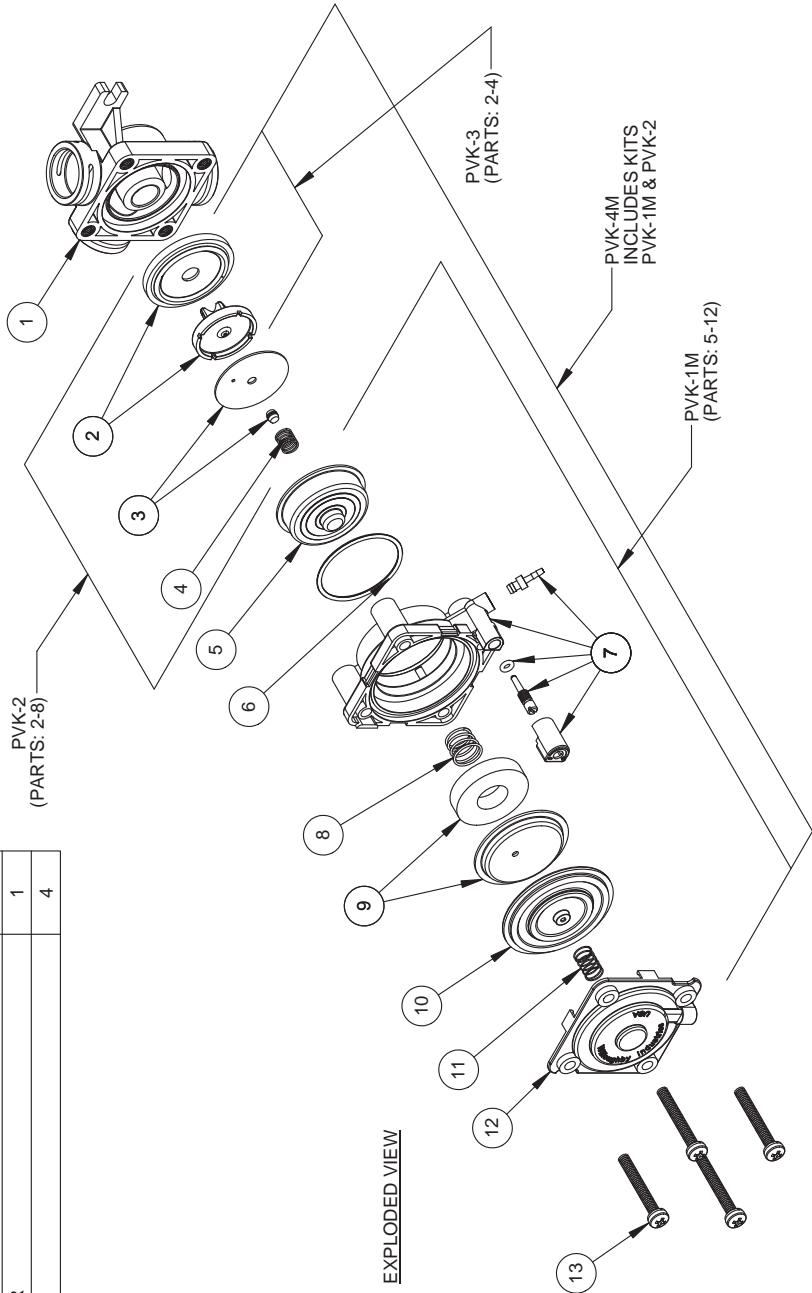
NOTE: PARTS LISTED IN THE PVK REPAIR KITS ARE NOT SOLD INDIVIDUALLY

NOTE: REPAIR KIT ORDERING #S ARE LISTED IN THE EXPLODED VIEW.

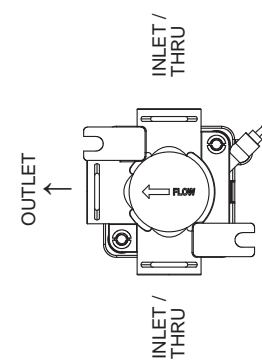
NOTE: PVK-1M, PVK-2 & PVK-3 PARTS ARE AVAILABLE IN KIT FORM ONLY.



ASSEMBLED VIEW



EXPLODED VIEW



VIEW FROM BOTTOM OF VALVE

<p>Willoughby Industries Inc. Indianapolis, Indiana</p>	TITLE / DESC:	PNEUMATIC METERING VALVE ASSEMBLY - LEFT	PART #:	980406L
	TOLERANCES EXCEPT AS NOTED	3 DEC: .0005 FRACTIONS: 1/32"	SCALE: 1:2.5	REV: MW 8/31/16
	ANGLE: 1°		DATE: 10/18/12	STANDARD
			REV: MW 8/31/16	SHEET: 1 OF 1

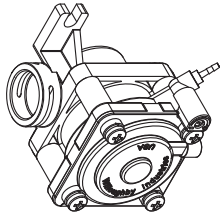
DRAWING: VALVE ASSEMBLY DETAIL

ITEM #	PART #	DESCRIPTION	QTY.
1	980420L	SINGLE TEMP BASE w/INSERTS, LEFT - PLUGGED PORT	1
2	980305	WATER SIDE DIAPHRAGM/ADAPTOR ASSY.	1
3	980310	WATER SIDE DISK ASSEMBLY	1
4	980136	SPRING, WATER SIDE DIAPHRAGM	1
5	980126	BARRIER CUP	1
6	980127	O-RING M1.5x32 BUNA-70	1
7	980410	METERING VALVE BODY ASSEMBLY	1
8	980135	SPRING, AIR SIDE MAGNET	1
9	980405	METERING VALVE MAGNET/CUP ASSEMBLY	1
10	980130	DIAPHRAGM, AIR SIDE, PNEUMATIC METERING VALVE	1
11	980134	AIR SIDE SPRING	1
12	380801M	AIR SIDE TOP COVER	1
13	980001A	#8-32 x 1 1/4" SCREW	4

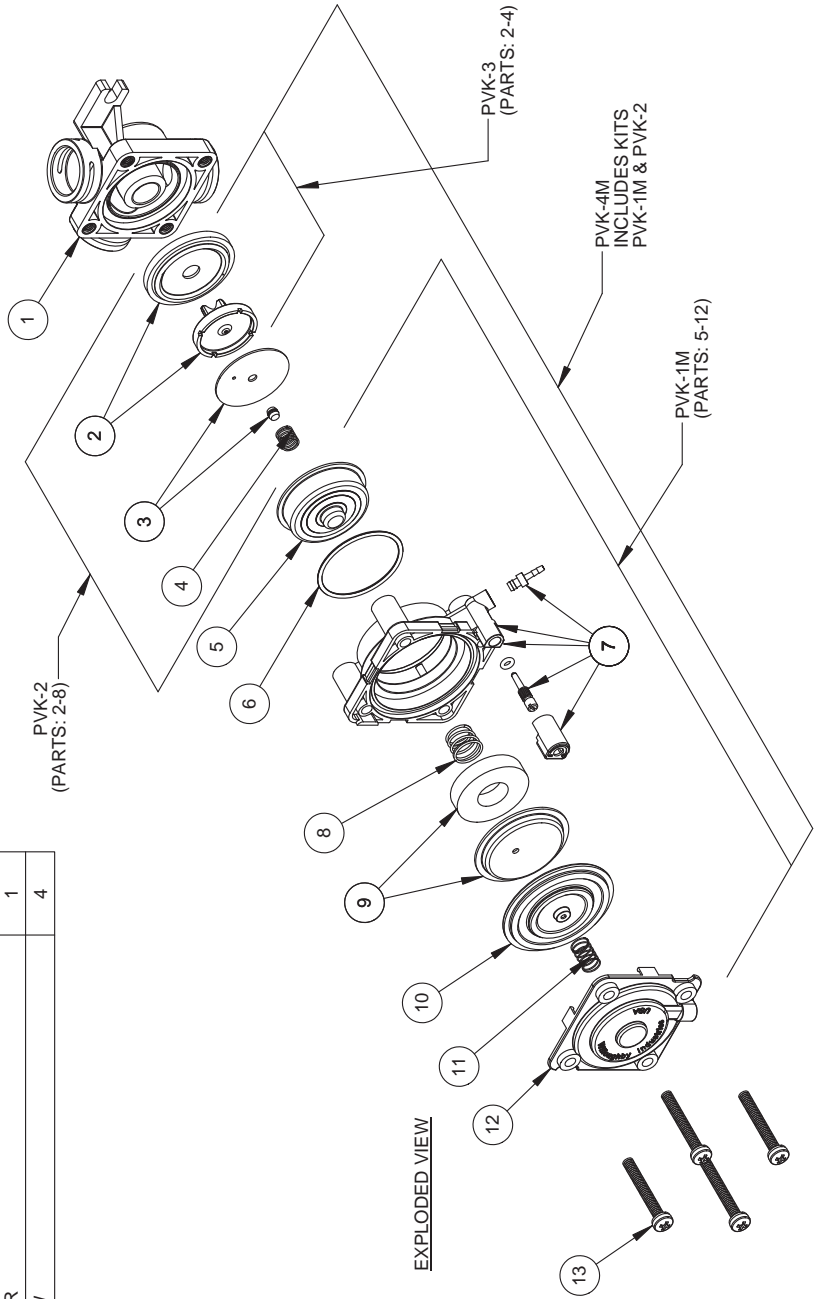
NOTE: PARTS LISTED IN THE PVK REPAIR KITS ARE NOT SOLD INDIVIDUALLY

NOTE: REPAIR KIT ORDERING #S ARE LISTED IN THE EXPLODED VIEW.

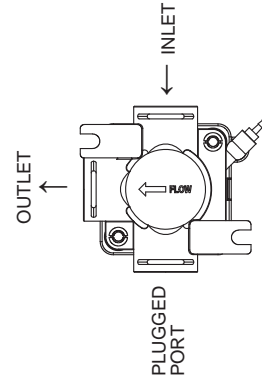
NOTE: PVK-1M, PVK-2, & PVK-3 PARTS ARE AVAILABLE IN KIT FORM ONLY.



ASSEMBLED VIEW



EXPLODED VIEW



VIEW FROM BOTTOM OF VALVE

		TITLE / DESC: PNEUMATIC METERING VALVE ASSY - LEFT PLUGGED		PART # 980406PL	
TOLERANCES EXCEPT AS NOTED		MATL: N/A		REVISION ORG: TRB 10/18/12 STANDARD	
PACS: 40.000		SCALE: 1:2.5		REV.: TRB 10/18/12 SHEET: 1 OF 1	
FRACTIONS: 1/32		ANGLE: 1°		A	
SIZE: A		REF:		PVK-4M INCLUDES KITS PVK-1M & PVK-2	

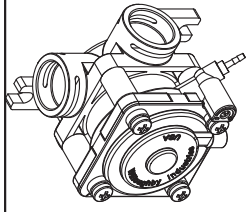
DRAWING: VALVE ASSEMBLY DETAIL

ITEM #	PART #	DESCRIPTION	QTY.
1	980420	SINGLE TEMP BASE w/INSERTS (ALL PORTS OPEN)	1
2	980305	WATER SIDE DIAPHRAGM/ADAPTOR ASSY.	1
3	980310	WATER SIDE DISK ASSEMBLY	1
4	980136	SPRING, WATER SIDE DIAPHRAGM	1
5	980126	BARRIER CUP	1
6	980127	O-RING M1.5x32 BUNA-70	1
7	980410	METERING VALVE BODY ASSEMBLY	1
8	980135	SPRING, AIR SIDE MAGNET	1
9	980405	METERING VALVE MAGNET/CUP ASSEMBLY	1
10	980130	DIAPHRAGM, AIR SIDE, PNEUMATIC METERING VALVE	1
11	980134	AIR SIDE SPRING	1
12	380801M	AIR SIDE TOP COVER	1
13	980001A	#8-32 x 1 1/4" SCREW	4

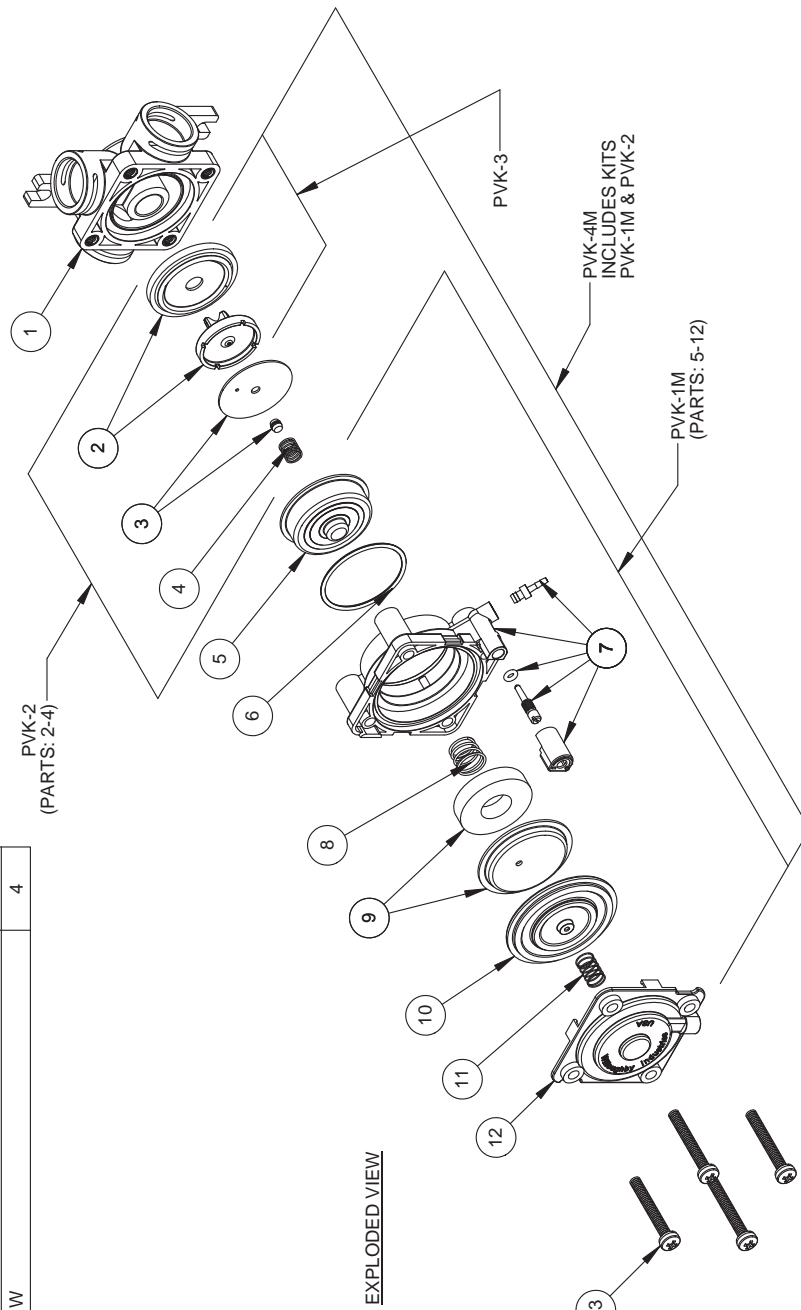
NOTE: PARTS LISTED IN THE PVK REPAIR KITS ARE NOT SOLD INDIVIDUALLY

NOTE: REPAIR KIT ORDERING #S ARE LISTED IN THE EXPLODED VIEW.

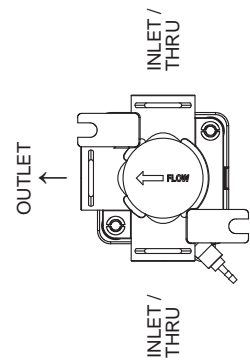
NOTE: PVK-1M, PVK-2 & PVK-3 PARTS ARE AVAILABLE IN KIT FORM ONLY.



ASSEMBLED VIEW



EXPLODED VIEW



VIEW FROM BOTTOM OF VALVE

<p>Willoughby Industries Inc. Indianapolis, Indiana</p>	TITLE / DESC:	PNEUMATIC METERING VALVE ASSEMBLY - (RIGHT)	PART #:	980406R
	TOLERANCES EXCEPT AS NOTED	3 DEC: .0005 2 FCS: .0010 FRACTIONS: 1/32"	MATL:	STANDARD
WILLOUGHBY	SCALE: 1:2.5	REV: MW	REV: TRB	10/18/12
	ANGLE: 1°			8/31/16
				SHEET: 1 OF 1

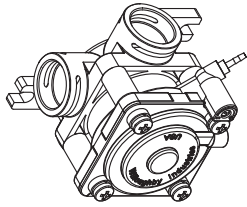
DRAWING: VALVE ASSEMBLY DETAIL

ITEM #	PART #	DESCRIPTION	QTY.
1	980420R	SINGLE TEMP BASE w/INSERTS - PLUGGED PORT	1
2	980305	WATER SIDE DIAPHRAGM/ADAPTOR ASSY.	1
3	980310	WATER SIDE DISK ASSEMBLY	1
4	980136	WATER SIDE SPRING	1
5	980126	BARRIER CUP	1
6	980127	O-RING M1.5x32 BUINA-70	1
7	980410	METERING VALVE BODY ASSEMBLY	1
8	980135	MAGNET SPRING	1
9	980405	METERING VALVE MAGNET/CUP ASSEMBLY	1
10	980130	AIR SIDE DIAPHRAGM	1
11	980134	AIR SIDE SPRING	1
12	380801M	AIR SIDE TOP COVER	1
13	980001A	#8-32 x 1 1/4" SCREW	4

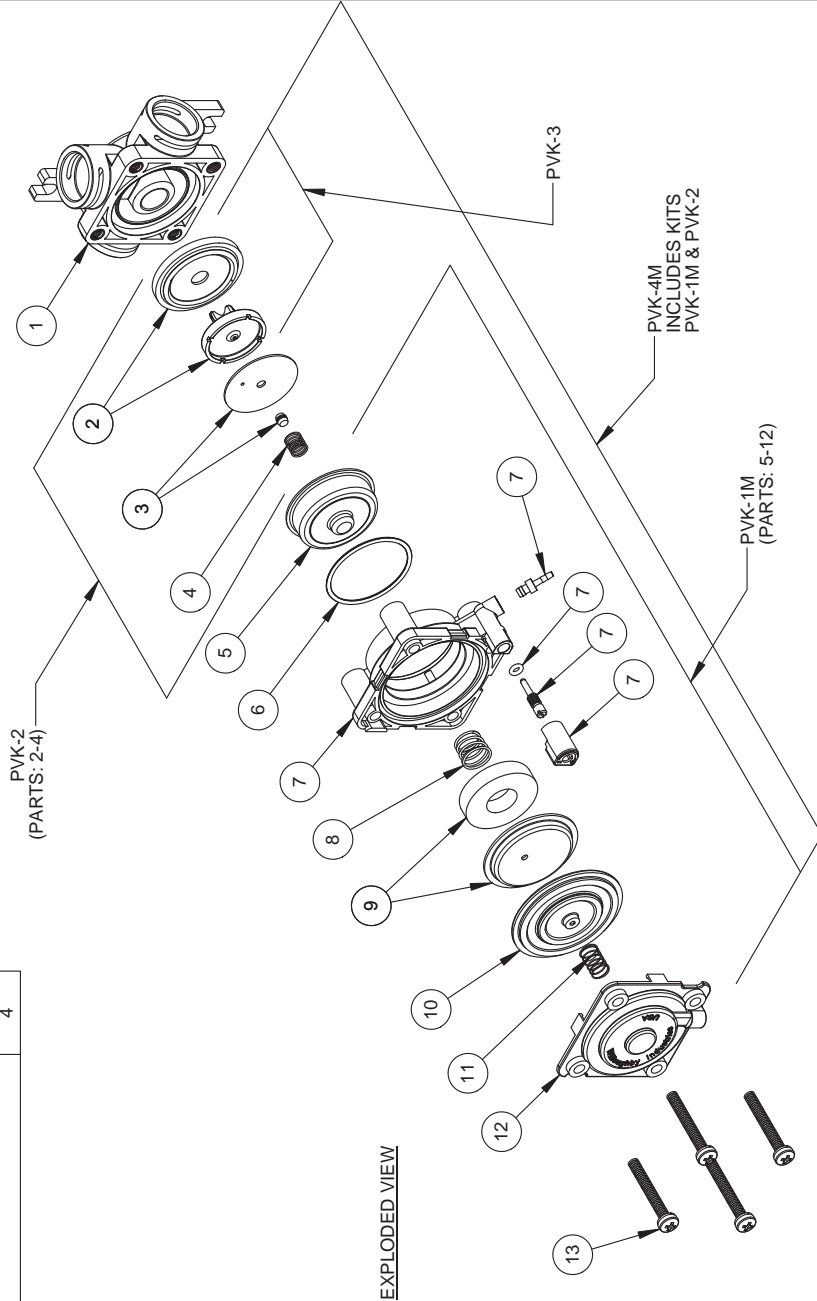
NOTE: PARTS LISTED IN THE PVK REPAIR KITS ARE NOT SOLD INDIVIDUALLY

NOTE: REPAIR KIT ORDERING #S ARE LISTED IN THE EXPLODED VIEW.

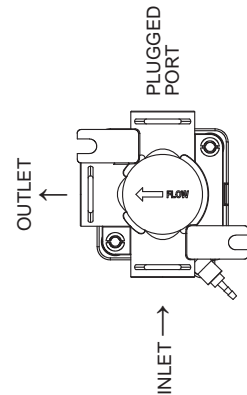
NOTE: PVK-1M, PVK-2 & PVK-3 PARTS ARE AVAILABLE IN KIT FORM ONLY.



ASSEMBLED VIEW



EXPLODED VIEW



VIEW FROM BOTTOM OF VALVE

Willoughby Industries Inc.
Indianapolis, Indiana

TOLERANCES EXCEPT AS NOTED

3 DEC: 40/100
FRACTIONS: 1/32"
ANGLE: 1°

MATL: N/A
SCALE: 1:2.5

REV: A

REV: EEF 1/19/15
REV: EEF 1/19/15

STANDARD SHEET: 1 OF 1

PART # 980406PR

TITLE (DESC): PNEUMATIC METERING VALVE ASSEMBLY - (RIGHT) PLUGGED PORT

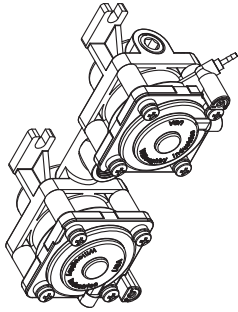
DRAWING: VALVE ASSEMBLY DETAIL

ITEM #	PART #	DESCRIPTION	QTY.
1	980415	DUAL TEMP BASE w/INSERTS	1
2	980305	WATER SIDE DIAPHRAGM/ADAPTOR ASSY.	2
3	980310	WATER SIDE DISK ASSEMBLY	2
4	980136	WATER SIDE SPRING	2
5	980126	BARRIER CUP	2
6	980127	O-RING M1.5x32 BUNA-70	2
7	980410	METERING VALVE BODY ASSEMBLY	2
8	980135	MAGNET SPRING	2
9	980405	METERING VALVE MAGNET/CUP ASSEMBLY	2
10	980130	AIR SIDE DIAPHRAGM	2
11	980134	AIR SIDE SPRING	2
12	380801M	AIR SIDE TOP COVER	2
13	980001A	#8-32 x 1 1/4" SCREW	8

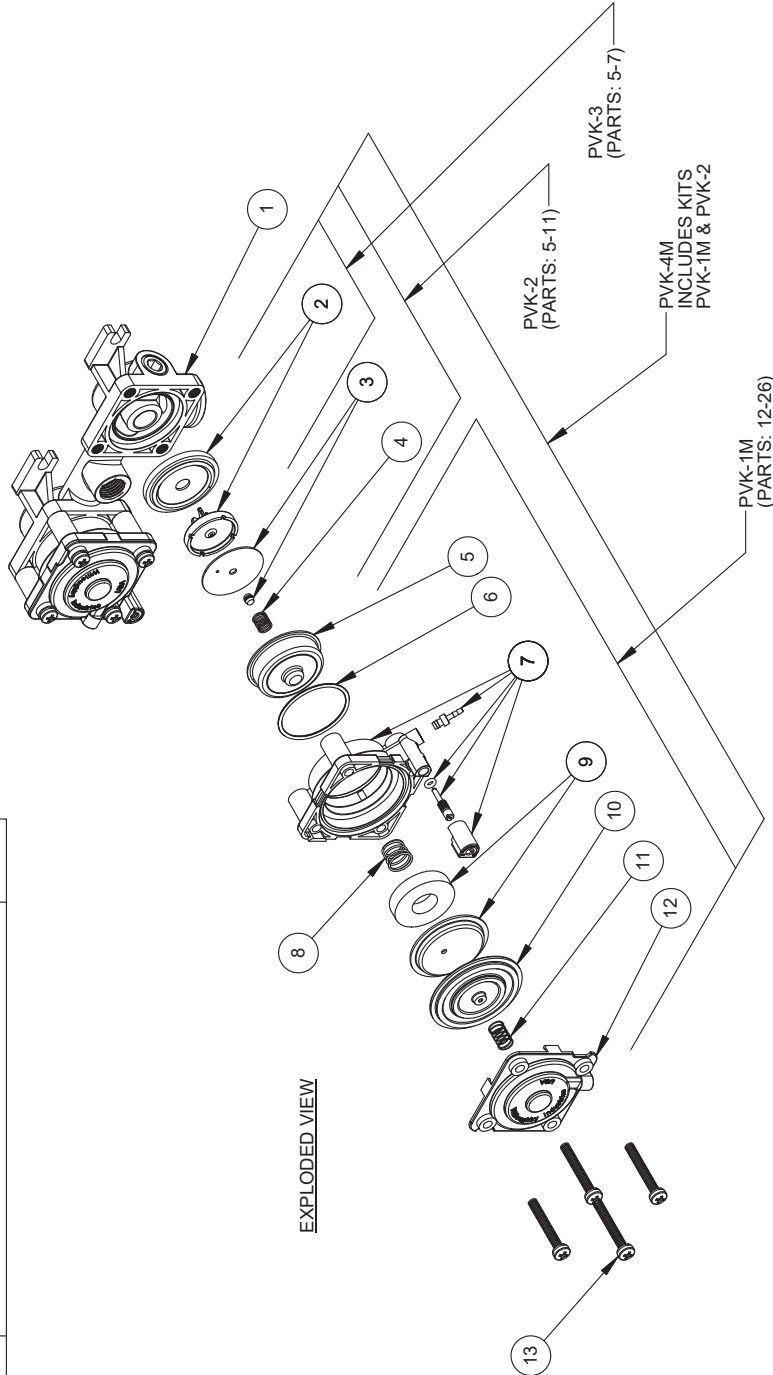
NOTE: PARTS LISTED IN THE PVK REPAIR KITS ARE NOT SOLD INDIVIDUALLY

NOTE: REPAIR KIT ORDERING #'S ARE LISTED IN THE EXPLODED VIEW.


NOTE: PVK-1M, PVK-2, & PVK-3 PARTS ARE AVAILABLE IN KIT FORM ONLY.



ASSEMBLED VIEW

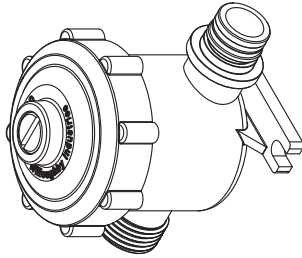


EXPLODED VIEW

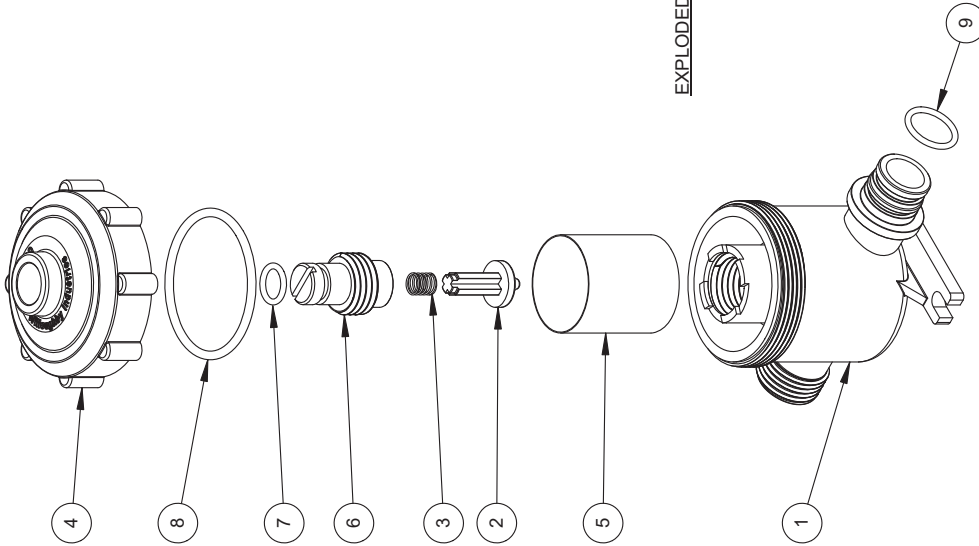
 <p>WILLOUGHBY</p>	<p>Willoughby Industries Inc. Indianapolis, Indiana</p>	<p>TITLE / DESC: DUAL TEMP PNEUMATIC METERING VALVE ASSEMBLY</p>	<p>PART # 980407</p>	
	<p>TOLERANCES EXCEPT AS NOTED</p> <p>CS: 40.00 3 PLCS FRACTIONS: 1/16, 1/32 ANGLE: 1°</p>	<p>SCALE: 1:3</p>	<p>MATL: N/A</p>	<p>REVISION ORG: EEF 1/16/15 REV: EEF 1/16/15</p>

DRAWING: CHECKSTOP DETAIL

ASSEMBLED VIEW



EXPLODED VIEW



ITEM #	PART #	DESCRIPTION	QTY.
1	980580	CHECKSTOP BASE AND FLOW RESTRICTOR ASSY	1
2	980194	STRAINER PLUNGER	1
3	980201	SPRING, CHECKSTOP/STRAINER	1
4	980192	STRAINER CAP	1
5	980168	SCREEN, STRAINER	1
6	980200	CHECKSTOP SCREW	1
7	980163	O-RING, #012	1
8	980165	O-RING, #130	1
9	980164	O-RING, #015	1

Willoughby Industries, Inc.
Indianapolis, Indiana

TOLERANCES EXCEPT AS NOTED

ANGLES #1°

FRACCTIONS #1/32

PLCS #0.06

SIZE #0.06

SCALE 1:2

MATL: N/A

REV: A

EEF 1/19/15

EEF 1/19/15

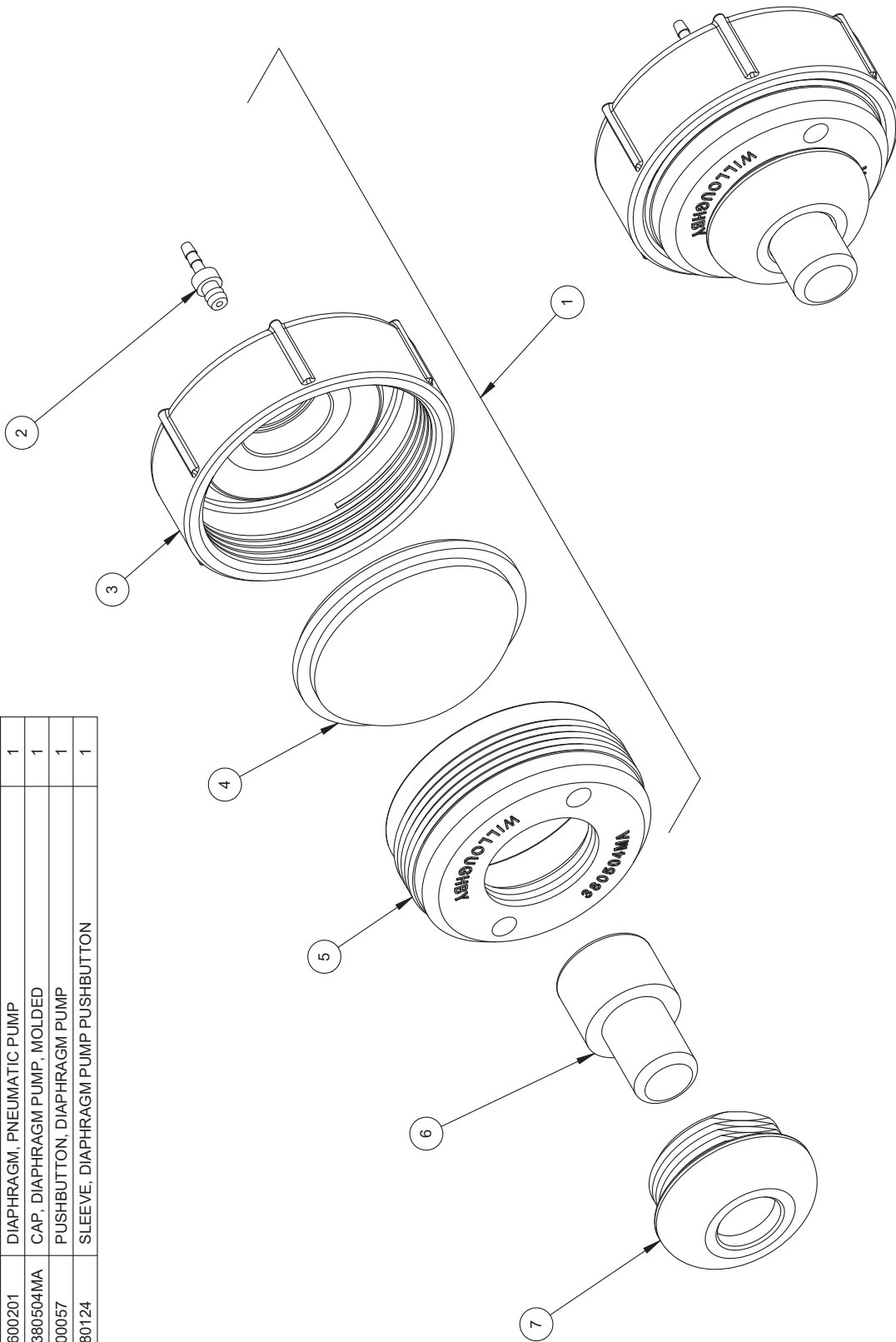
STANDARD SHEET: 1 OF 1


TITLE/DESC: CHECKSTOP ASSEMBLY

PART #: 980183

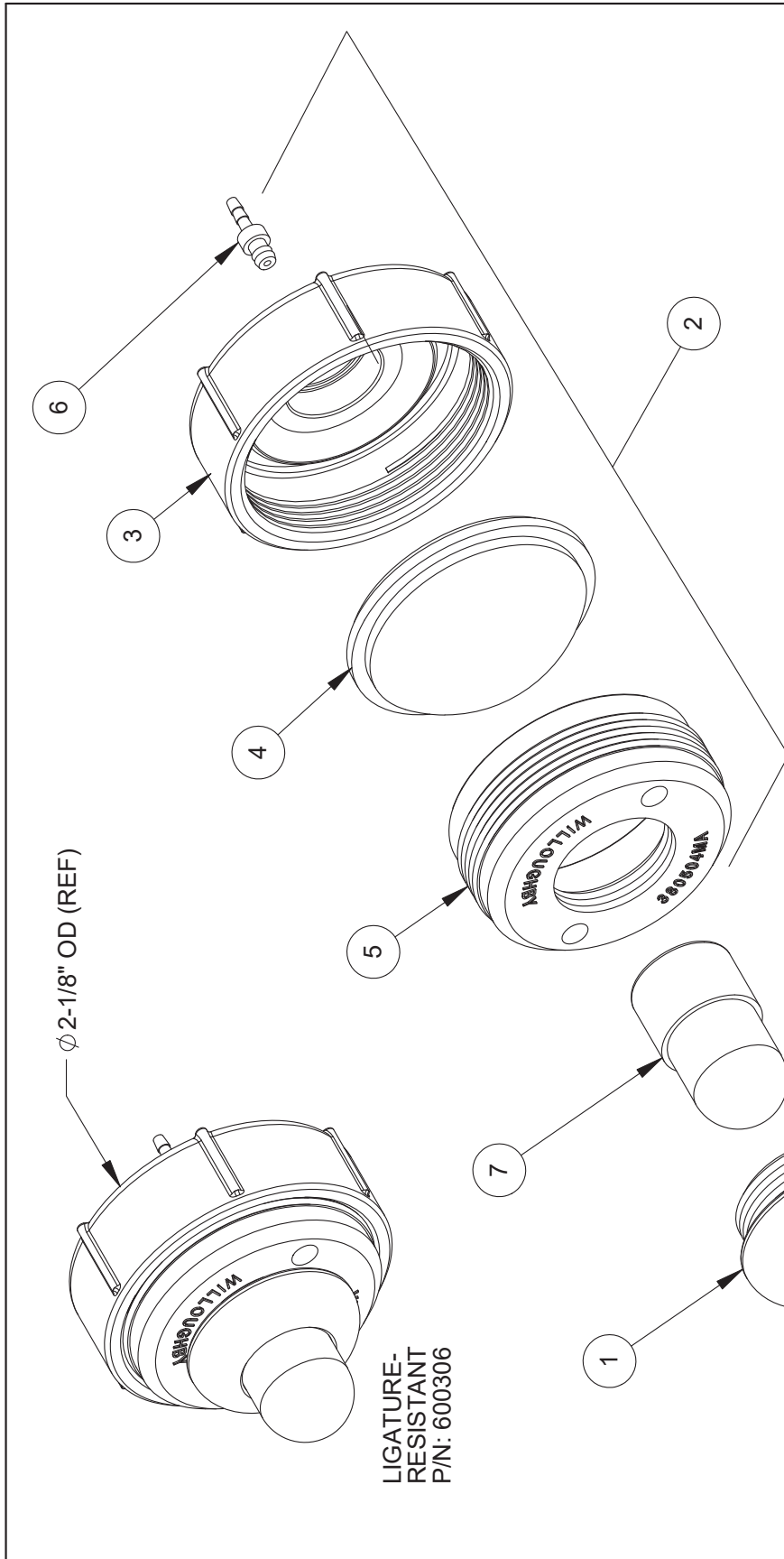
NOTE: PARTS 2 AND 3 MUST BE PURCHASED TOGETHER

ITEM #	PART #	DESCRIPTION	QTY.
1	600307RK	REPAIR KIT FOR DIAPHRAGM PUSHBUTTON PUMP	1
2	380840	FITTING, HOSE BARB, PUSH-IN, 1/16" (BRASS)	1
3	380506MA	BODY, PUSH BUTTON DIAPHRAGM PUMP, MOLDED	1
4	600201	DIAPHRAGM, PNEUMATIC PUMP	1
5	380504MA	CAP, DIAPHRAGM PUMP, MOLDED	1
6	600057	PUSHBUTTON, DIAPHRAGM PUMP	1
7	380124	SLEEVE, DIAPHRAGM PUMP PUSHBUTTON	1



		TITLE / DESC: (PPB) PNEUMATIC PUSHBUTTON		PART # 600307
Willoughby Industries Inc. Indianapolis, Indiana		TITLE / DESC: (PPB) PNEUMATIC PUSHBUTTON		REVISION ORG: JBU 3/14/00 STANDARD
TOLERANCES EXCEPT AS NOTED		MAT'L: AS NOTED, SEE BOM		REV: MW 10/26/16 SHEET: 1 OF 1
SIZE: 3/16"		SCALE: 1:1		
FRACTIONS: 1/32"				
ANGLE: 1°				
WILLOUGHBY				

DRAWING: PUSH BUTTON DETAIL

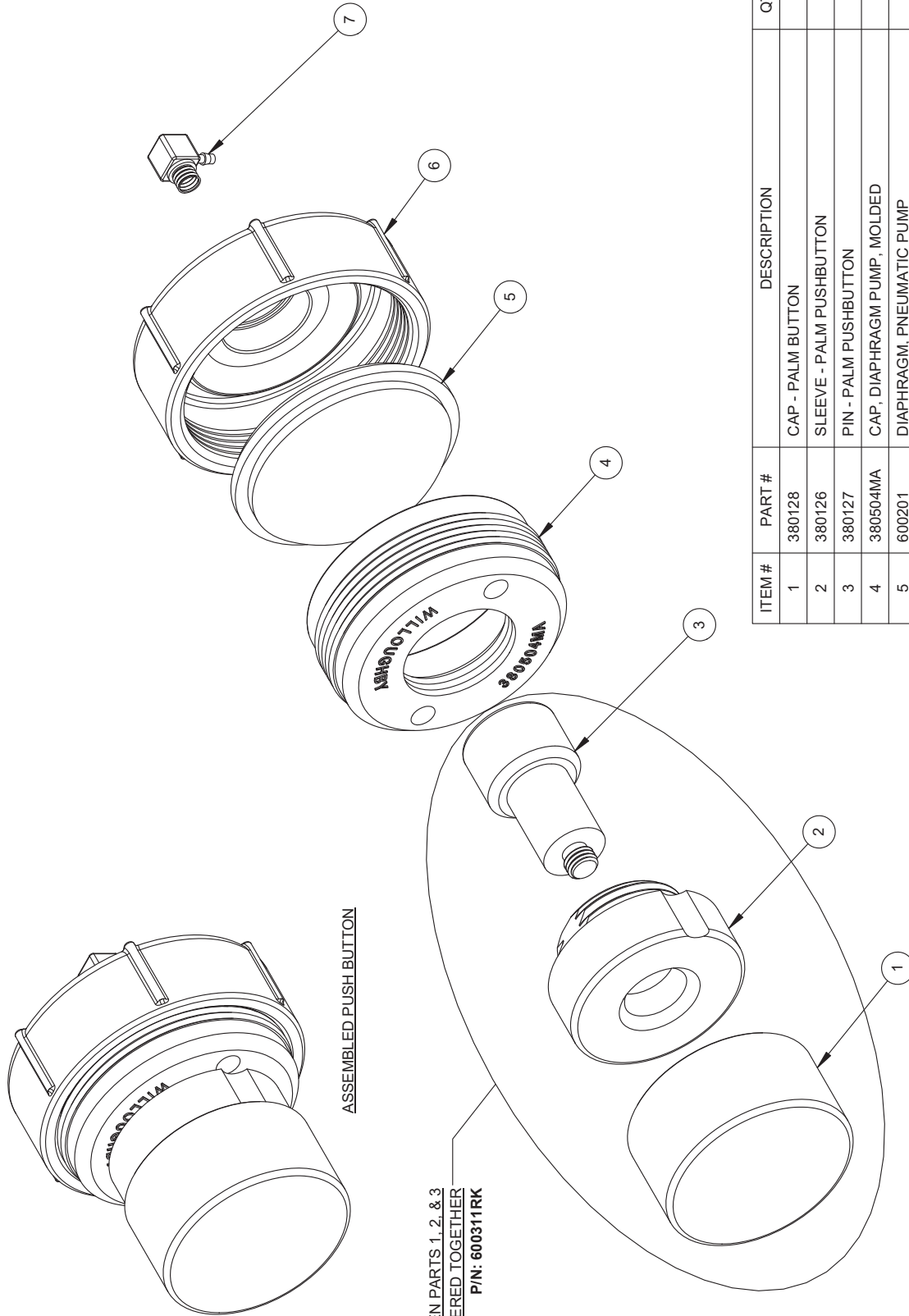


ITEM NO.	PART #	DESCRIPTION	QTY.
1	380130	LIGATURE-RESISTANT (AS) SLEEVE, DIAPHRAGM PUMP	1
2	600307RK	REPAIR KIT FOR DIAPHRAGM PUSHBUTTON PUMP	1
3	380506MA	BODY, PUSH BUTTON DIAPHRAGM PUMP, MOLDED	1
4	600201	DIAPHRAGM, PNEUMATIC PUMP	1
5	380504MA	CAP, DIAPHRAGM PUMP, MOLDED	1
6	380840	FITTING, HOSE BARB, PUSH-IN, 1/16" (BRASS)	1
7	600053	LIGATURE-RESISTANT PUSHBUTTON, DIAPHRAGM PUMP	1

NOTE: PARTS 3 AND 6 MUST BE PURCHASED TOGETHER

		TITLE / DESC: (PBH) LIGATURE-RESISTANT PNEUMATIC PUSH BUTTON PART #: 600306	
Willoughby Industries, Inc. Indianapolis, Indiana		REVISION: ORG.-JBU 1/24/06 STANDARD	
TOLERANCES EXCEPT AS NOTED		REF: MW 10/26/16 SHEET: 1 OF 1	
2 PLS: 40/3 FRACTIONS: 1/32	SIZE: A SCALE: 1:20	A	

DRAWING: PUSH BUTTON DETAIL



ITEM #	PART #	DESCRIPTION	QTY.
1	380128	CAP - PALM BUTTON	1
2	380126	SLEEVE - PALM PUSHBUTTON	1
3	380127	PIN - PALM PUSHBUTTON	1
4	380504MA	CAP, DIAPHRAGM PUMP, MOLDED	1
5	600201	DIAPHRAGM, PNEUMATIC PUMP	1
6	380506MA	BODY, PUSH BUTTON DIAPHRAGM PUMP, MOLDED	1
7	600486	FITTING; HOSEBARB, 90DEG #10-32 x .0625	1

Willoughby Industries, Inc.
Indianapolis, Indiana

WILLOUGHBY

TOLERANCES EXCEPT AS NOTED

2 PLS: .003
3 PLS: .0015
FRACTIONS: 1/32"
ANGLE: 5°

SIZE: A
SCALE: 1:2

FILE / DESC: PALM / FOOT PUSH BUTTON ASSEMBLY (PLPB)

PART # 600311

REV/ISSN/ ORIG: JR 2/10/06
REV: MW 10/26/16

MATL: T303 STAINLESS STEEL (AS NOTED - SEE BOM)

REF: A

STANDARD SHEET: 1 OF 1

WARRANTY

With respect to goods manufactured by Willoughby, Willoughby warrants the goods to be free from defects in materials and workmanship under normal use and service for one year from the date of shipment; and Willoughby will replace or repair, at its option, any goods which are found defective in material or workmanship within said one-year period from date of shipment upon notification by Buyer identifying each and every defect. Willoughby's obligation with respect to such goods shall be limited to replacement or repair, F.O.B. Indianapolis, Indiana, and in no event shall Willoughby be liable for consequential or special damages, or for transportation, installation, adjustment, replacement or other expenses which may arise in connection with such goods. Any misuse or abuse of the goods voids this limited warranty.

THIS WARRANTY IS EXPRESSLY MADE IN LIEU OF ANY AND ALL OTHER WARRANTIES, EXPRESS OR IMPLIED, INCLUDING THE IMPLIED WARRANTIES OF MERCHANTABILITY AND FITNESS FOR A PARTICULAR PURPOSE.