

## ASCWSMS-HCA-2HD Series Ligature-resistant Handicap Accessible Surface Mounted Wall Shower



### Recommended Specifications

Ligature-resistant, Handicap Accessible, Surface Mounted Wall Shower shall be:

Willoughby Model No. **ASCWSMS-HCA-2HD**

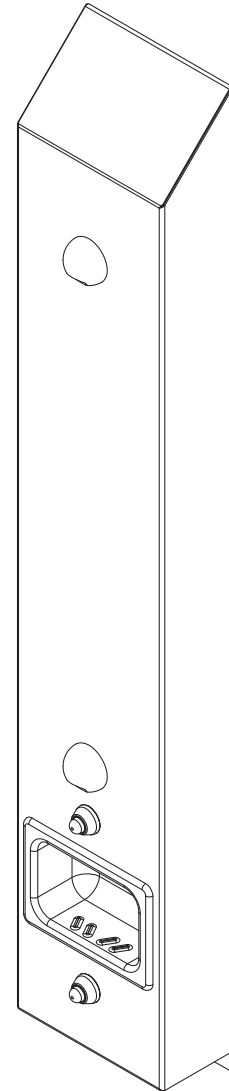
(Select from model number and options list on next page)

Shower panel shall be fabricated from 16 gauge, Type 304 stainless steel with exposed stainless surfaces polished to a #4 satin finish.

Standard equipment shall include:

- Shower valves (from Valve Selection options list)
- Ligature-resistant push buttons
- (CSH) ligature-resistant shower heads
- Ligature-resistant sloped cabinet top
- Z-clip mounting bracket

Anchoring shall be by Z-clip and bottom flange with anchoring hardware by others. Shower unit shall be factory assembled, tested for proper operation, and ready for installation by a contractor. Unit requires no chase area for installation and maintenance.



*(Unit may be shown with optional features)*

To specify fixture and accessories, use the Model Number and Options page.

Example: To specify a Ligature-resistant, Handicap Accessible, Surface Mounted Wall Shower with single temp. pneumatic metering valves (manifolded), standard ligature-resistant pneumatic push buttons, standard 2.5 GPM flow rate, standard CSH ligature-resistant shower heads, thermostatic mixing valve, and recessed soap dish

Use the following Willoughby Model Number:

**ASCWSMS-HCA-2HD-PML1-MA2-PBH-2.5-CSH-TMV-RD**

### Handicap Accessible:

The ASCWSMS-HCA-2HD will conform to most, but not all, ADA requirements; for complete ADA Compliance, see Model No. CWSMS-ADA-WH.

(Compliance shall be subject to the requirements of the local code authority based on installation-specific details and is the responsibility of the installer.)

visit our website at [www.willoughby-ind.com](http://www.willoughby-ind.com)

5105 West 78th Street • Indianapolis, IN. 46268

(317) 875-0830 • Fax: (317) 875-0837 • (800) 428-4065



MADE IN THE U.S.A.

# MODEL NUMBER AND OPTIONS:

**1.) Base Model Number:**

- ASCWSMS-HCA-2HD Ligature-resistant, Handicap Accessible, Surface Mounted Wall Shower

**2.) Valve Selection:**

- NV No Valve
- PML1 Single Temp. Pneumatic Metering
- PML2 Dual Temp. Pneumatic Metering
- E1L1 Single Temp. Electronic (w/ Pneutronic Control)\*
- E1L2 Dual Temp. Electronic (w/ Pneutronic Control)\*
- TPLR Ligature-resistant Temp/Pressure-balancing Mixing Valve
- MA2 **Valve Manifold Option (Pneumatic or Electronic Valves Only):**  
(See the Manifold Option Page at the end of Catalog Section C14 for further information)

**3.) Diverter Valve Option:**

- DVLR Ligature-resistant Diverter Valve
- PML1-MA2 Two Single Temp. Pneumatic Metering Valves  
(Used to divert water flow to either upper, lower, or both shower heads; for use with (TPLR) valve option above)

**4.) Push Button Selection: Pneumatic or Electronic Valves Only:**

- PBH Ligature-resistant Push Buttons
- EPBH Ligature-resistant Electronic Push Buttons\*

**5.) Flow Rates:**

- 2.5 GPM (Standard)     2.0 GPM     1.5 GPM

**6.) Electronic Control\* (Must Use Electronic Push Button):**

- WUSC-2200     WUSC-2400     Pneutronic

**7.) Shower Head Options:**

- CSH Ligature-resistant Shower Heads (Standard)

**8.) Other Options:**

- TF24H Hard-wired Transformer, 110VAC to 24VAC\* (Standard)
- TF24P Plug-in Transformer, 110VAC to 24VAC\*
- TMV Inline Thermostatic Mixing Valve
- RD Recessed Mounted Soap Dish\*\*
- RSD2 Recessed Soap Dish (In-Wall Mounted)
- ASGB Ligature-resistant Grab Bar (Wall Mounted, Specify Dimensions):

PS Pipe Shroud (Specify Length): \_\_\_\_\_

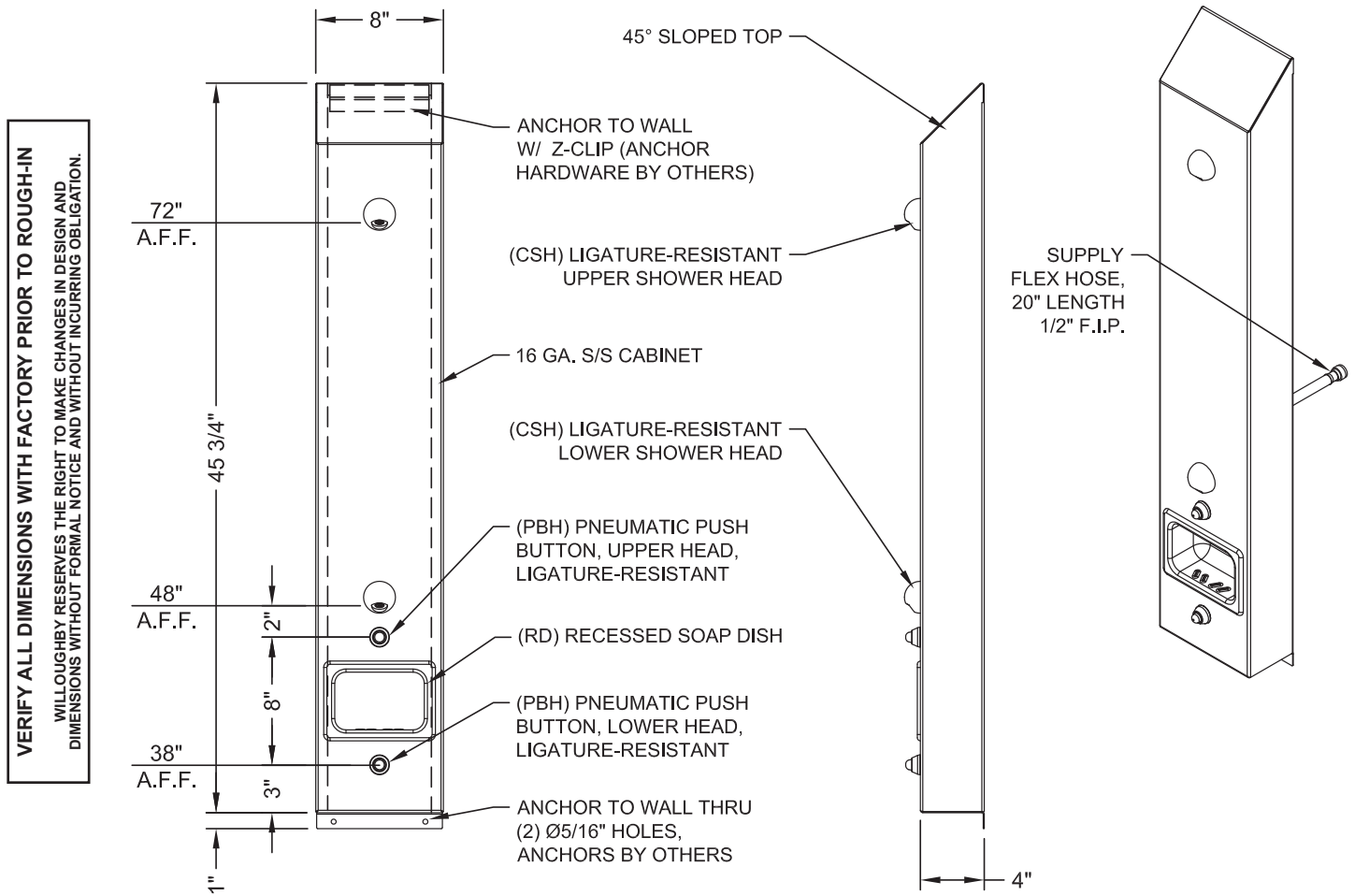
Other \_\_\_\_\_

Other \_\_\_\_\_

\* (Req. 110V power through ground fault interrupter (GFCI) receptacle)

\*\* (When (RD) is used in conjunction with (TPLR) mixing valve or (DVLR) diverter valve, shower cabinet width will increase by 7")

Approved For Manufacturing By: \_\_\_\_\_ Date: \_\_\_\_\_ Company: \_\_\_\_\_  
Wall Thickness: \_\_\_\_\_ Wall Type: \_\_\_\_\_



visit our website at [www.willoughby-ind.com](http://www.willoughby-ind.com)  
 5105 West 78th Street • Indianapolis, IN. 46268  
 (317) 875-0830 • Fax: (317) 875-0837 • (800) 428-4065



MADE IN THE U.S.A.

© Rev. 8/2017