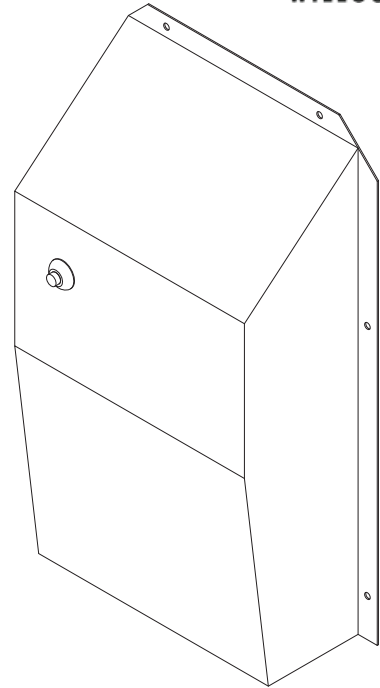


ASUFVC

Ligature-resistant Urinal Flush Valve Cover

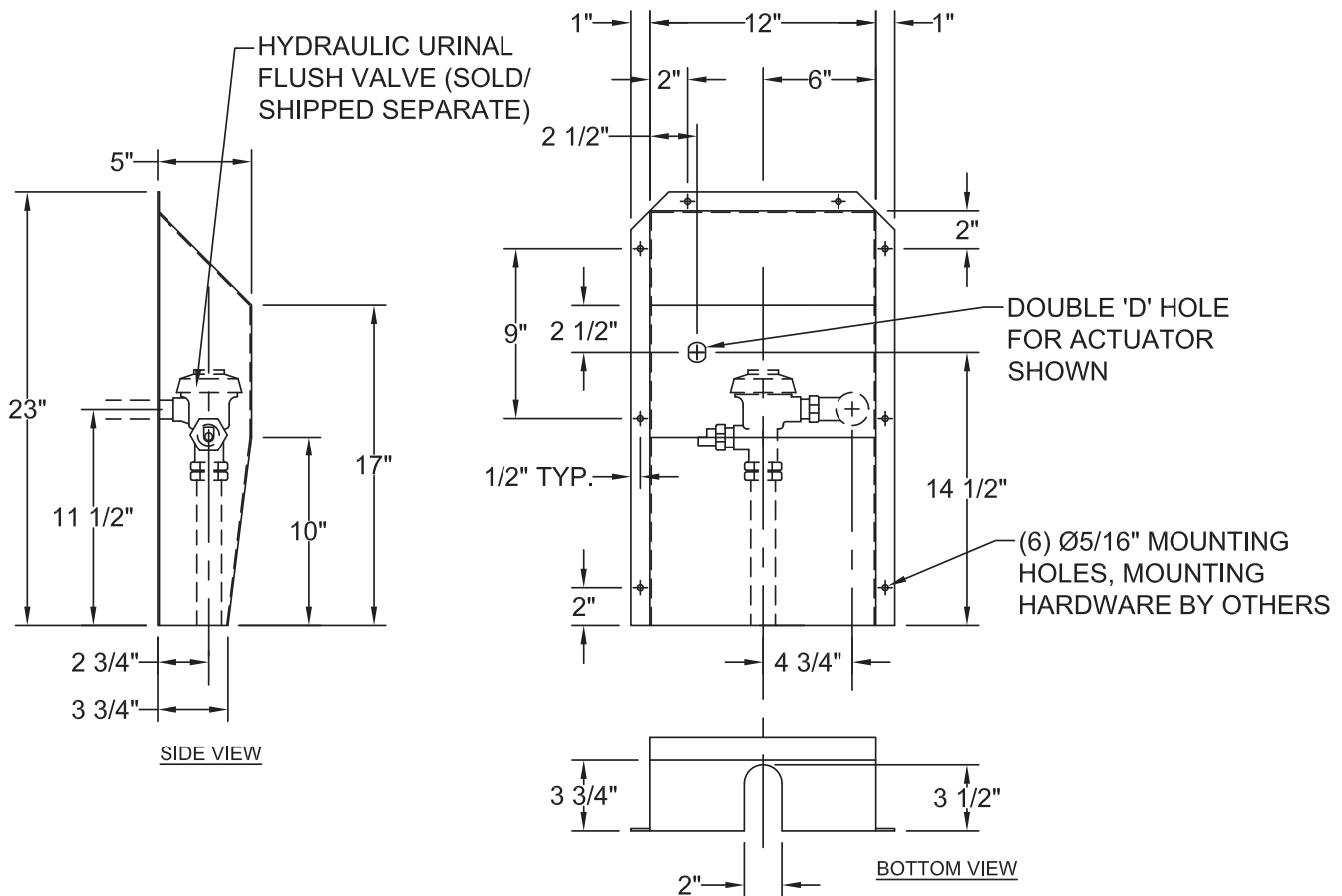
Stainless steel ligature-resistant urinal flush valve cover shall be:
Willoughby Option No. **ASUFVC**

Urinal flush valve cover shall be fabricated from 14 GA, Type 304 stainless steel with exposed stainless steel surfaces polished to a #3 satin finish. Flush valve cover is supplied with $\varnothing 5/16"$ mounting holes, anchoring hardware is provided by others. Flush valve cover shall have ligature-resistant sloped top and bottom.



Options:

- DC Decorator Color (Fixture exterior only- White)
- For use with Willoughby push button actuator (double 'D' hole required)
- For use with Sloan push button actuator ($\varnothing 1-1/2"$ hole required)
- For use with another push button actuator (specify hole size: _____)



visit our website at www.willoughby-ind.com
5105 West 78th Street • Indianapolis, IN. 46268
(317) 875-0830 • Fax: (317) 875-0837 • (800) 428-4065



MADE IN THE U.S.A.