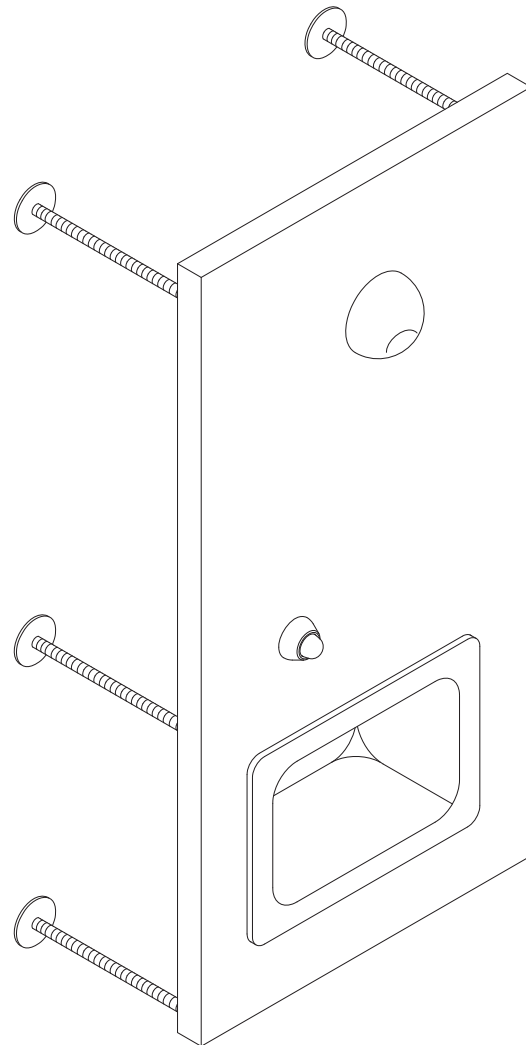


ASWRS Series Ligature-resistant Rear Mounted Recessed Shower Panel



(Unit may be shown with optional features)

Recommended Specifications

Ligature-resistant, Rear Mounted, Recessed Shower Panel shall be: Willoughby Model No. **ASWRS**
(Select from model number and options list on next page)

Shower panel shall be fabricated from 14 gauge, Type 304 stainless steel with exposed stainless surfaces polished to a #4 satin finish.

Standard equipment shall include:

- Shower valve (Select from Valve Selection options list)
- (CSH) ligature-resistant, vandal resistant shower head

Anchoring shall be by standard 6-point system: 1/2" threaded rods, nuts and washers shall be furnished for walls up to 8" thick. Unit requires chase area for installation and maintenance.

To specify fixture and accessories, use the Model Number and Options page.

Example: To specify a Ligature-resistant, Rear Mounted, Recessed Shower Panel with single temp. pneumatic metering valve, (PBH) push button, standard 2.5 GPM flow rate, standard (CSH) shower head, in-line thermostatic mixing valve, and recessed mounted soap dish

Use the following Willoughby Model Number:

ASWRS-PML1-PBH-2.5GPM-CSH-TMV-RD

visit our website at www.willoughby-ind.com

5105 West 78th Street • Indianapolis, IN. 46268

(317) 875-0830 • Fax: (317) 875-0837 • (800) 428-4065



MADE IN THE U.S.A.

MODEL NUMBER AND OPTIONS:

1.) Base Model Number:

ASWRS Ligature-resistant, Rear Mounted, Recessed Shower Panel

5.) Electronic Controls* (Must Use Electronic Push Button):

WUSC-2200 WUSC-2400 Pneutronic WMS II

2.) Valve Selection:

- NV No Valve
- PML1 Single Temp. Pneumatic Metering
- PML2 Dual Temp. Pneumatic Metering
- E1L1 Single Temp. Electronic (Pick Control)*
- E1L2 Dual Temp. Electronic (Pick Control)*

Valve Manifold Option:

Pneumatic or Electronic Valves Only:

(See the Manifold Option Page at the end of Catalog Section S5 for further information)

MA2

6.) Shower Head Selection:

CSH Ligature-resistant Shower Head (Standard)

7.) Options:

- TMV In-line Thermostatic Mixing Valve
- TF24H Hard-wired Transformer, 110VAC to 24VAC*
- TF24P Plug-in Transformer, 110VAC to 24VAC*
- RD Recessed Mounted Soap Dish
- WS Wall Sleeve (Requires Accessible Chase)
- MT Wall Template
- Other _____
- Other _____

* (Req. 110V power through ground fault interrupter (GFCI) receptacle)

3.) Push Button Selection:

Pneumatic or Electronic Valves Only:

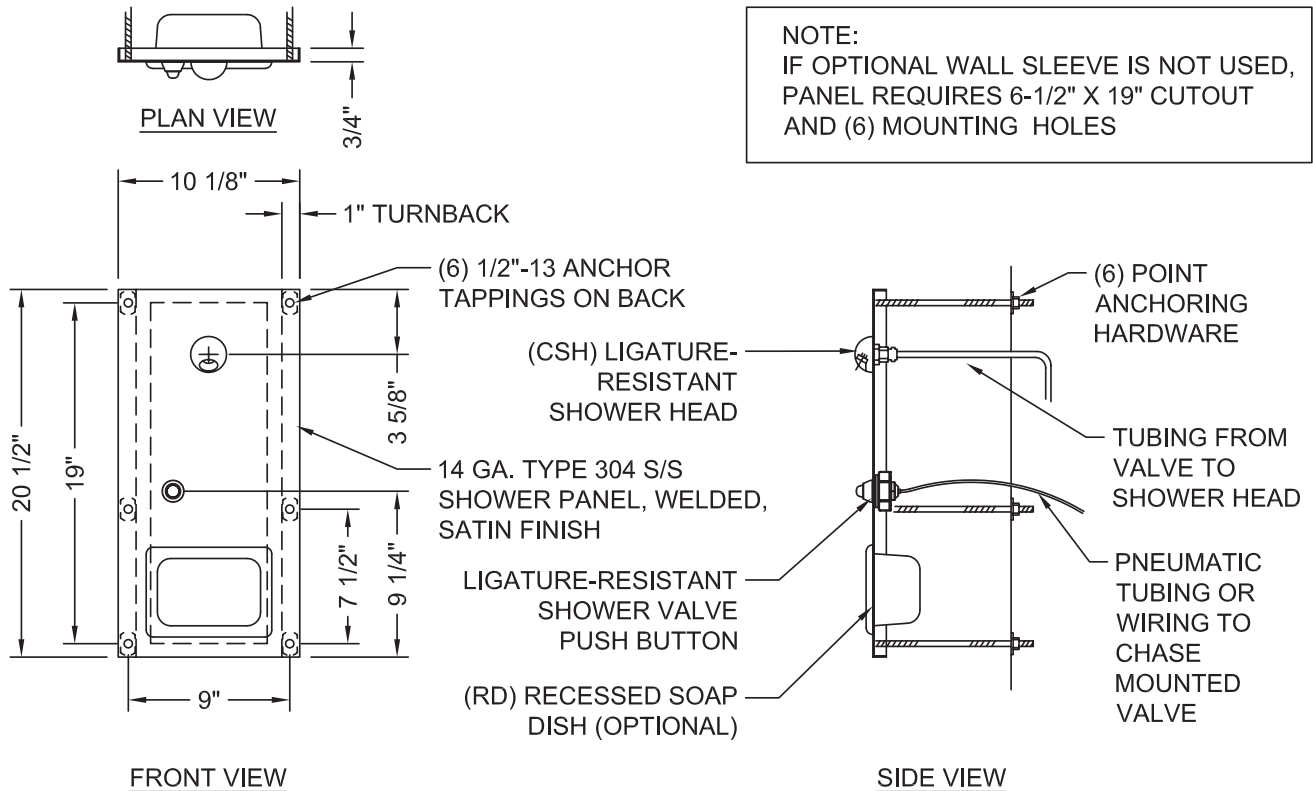
- PBH Ligature-resistant Push Buttons
- EPBH Ligature-resistant Electronic Push Buttons*
- PZPB Piezo Push Buttons*

4.) Flow Rates:

- 2.5 GPM (Standard)
- 2.0 GPM
- 1.5 GPM

Approved For Manufacturing By: _____ Date: _____ Company: _____
 Wall Thickness: _____ Wall Type: _____

VERIFY ALL DIMENSIONS WITH FACTORY PRIOR TO ROUGH-IN
 WILLOUGHBY RESERVES THE RIGHT TO MAKE CHANGES IN DESIGN AND DIMENSIONS WITHOUT FORMAL NOTICE AND WITHOUT INCURRING OBLIGATION.



NOTE:
 IF OPTIONAL WALL SLEEVE IS NOT USED, PANEL REQUIRES 6-1/2" X 19" CUTOUT AND (6) MOUNTING HOLES

visit our website at www.willoughby-ind.com
 5105 West 78th Street • Indianapolis, IN. 46268
 (317) 875-0830 • Fax: (317) 875-0837 • (800) 428-4065



MADE IN THE U.S.A.