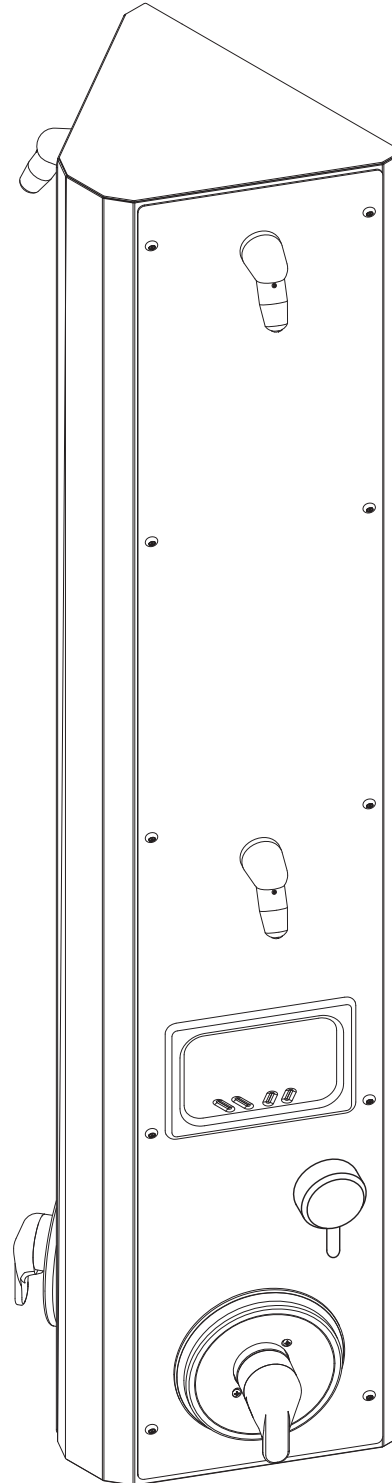


## CWDS-HCA Series Handicap Accessible Two Station Surface Mounted Wall Shower



### Recommended Specifications

Handicap Accessible, Two Station, Surface Mounted Wall Shower shall be: Willoughby Model No. **CWDS-HCA**  
(Select from model number and options list on next page)

Shower cabinet shall be fabricated from 16 gauge, Type 304 stainless steel with exposed stainless surfaces polished to a #4 satin finish. Wall bracket shall be fabricated from 16 gauge, Type 304 stainless steel.

Standard equipment shall include:

- Shower valves (from Valve Selection options list)
- Shower heads (from Shower Head Selection options list)
- Mounting bracket

Shower face plate shall attach to mounting bracket with vandal resistant stainless steel security screws. Mounting bracket anchoring hardware by others. Unit requires no chase area for installation and maintenance.

#### **Handicap Accessible:**

The CWDS-HCA surface mounted shower will conform to most, but not all, ADA requirements.

(Compliance shall be subject to the requirements of the local code authority based on installation-specific details and is the responsibility of the installer.)

*(Unit may be shown with optional features)*

To specify fixture and accessories, use the Model Number and Options page.

Example: To specify a Handicap Accessible, Two Station, Surface Mounted Wall Shower with temp./ pressure-balancing mixing valve, diverter valve, standard 2.5 GPM flow rate, (2) APS adjustable vandal-resistant shower heads, and recessed soap dish

Use the following Willoughby Model Number:

**CWKS-HCA-TPV-DV-2.5-APS-2HD-RD**

visit our website at [www.willoughby-ind.com](http://www.willoughby-ind.com)  
5105 West 78th Street • Indianapolis, IN. 46268  
(317) 875-0830 • Fax: (317) 875-0837 • (800) 428-4065



MADE IN THE U.S.A.

# MODEL NUMBER AND OPTIONS:

## 1.) Base Model Number:

- CWDS-HCA Handicap Accessible, Two Station, Surface Mounted Wall Shower

## 2.) Valve Selection:

- NV No Valve  
 PML1 Single Temp. Pneumatic Metering  
 PML2 Dual Temp. Pneumatic Metering  
 E1L1 Single Temp. Electronic (w/ Pneutronic Control)\*  
 E1L2 Dual Temp. Electronic (w/ Pneutronic Control)\*  
 PBV Pressure-Balancing Mixing Valve  
 TPV Temperature/Pressure-Balancing Mixing Valve  
 TPLR Ligature-resistant Temp/Pressure-balancing Mixing Valve  
 SVC Single Temp. Compression Valve  
 DVC Dual Temp. Compression Valves

## 3.) Diverter Valve:

- DV Diverter Valve  
 DVLR Ligature-resistant Diverter Valve  
 PML1-MA2 Two Single Temp. Pneumatic Metering Valves (Used to divert water flow to either upper, lower, or both shower heads; for use with Mixing Valve options above)

## 4.) Push Button Selection:

*Pneumatic or Electronic Valves Only:*

- PPB Pneumatic Push Buttons  
 PBH Ligature-resistant Push Buttons  
 EPB Electronic Push Buttons\*  
 EPBH Ligature-resistant Electronic Push Buttons\*  
 PZPB Piezo Electronic Push Buttons\*

## 5.) Flow Rates:

- 2.5 GPM (Standard)  2.0 GPM  1.5 GPM

## 6.) Electronic Control\* (Must Use Electronic Push Button):

- WUSC-2200  WUSC-2400  Pneutronic

## 7.) Shower Head Selection:

- APS Adjustable Vandal-resistant Shower Head  
 NPS Non-Adjustable Vandal-resistant Shower Head  
 UBJ Universal Ball Joint Shower Head  
 LBJ Lockable Ball Joint Shower Head  
 CSH Ligature-resistant Shower Head  
 FX Hand-held Flexshower Head (w/ quick disconnect, vacuum breaker, and (1) hook)  
 2HD Dual Fixed Shower Heads (replaces (FX) Flexshower head w/ second of the selected fixed Shower Head)

## 8.) Other Options:

- TF24H Hard-wired Transformer, 110VAC to 24VAC\* (Standard)  
 TF24P Plug-in Transformer, 110VAC to 24VAC\*  
 TMV Inline Thermostatic Mixing Valve  
 HL Hi-Lo (2 Hooks For Flexshower)  
 SLB24 24" Adjustable Slide Bar (for Flexshower, Wall Mounted)  
 SD Surface Mounted Soap Dish  
 RD Recessed Mounted Soap Dish  
 GB Grab Bar (Wall Mounted, Specify Dimensions):

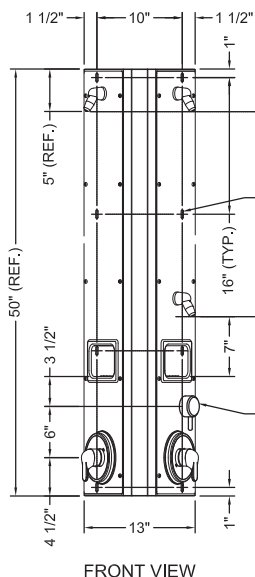
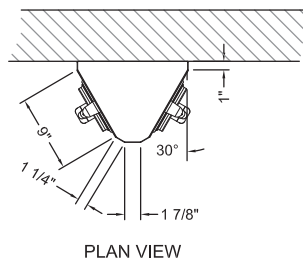
- PS Pipe Shroud (Specify Length): \_\_\_\_\_

- Other \_\_\_\_\_

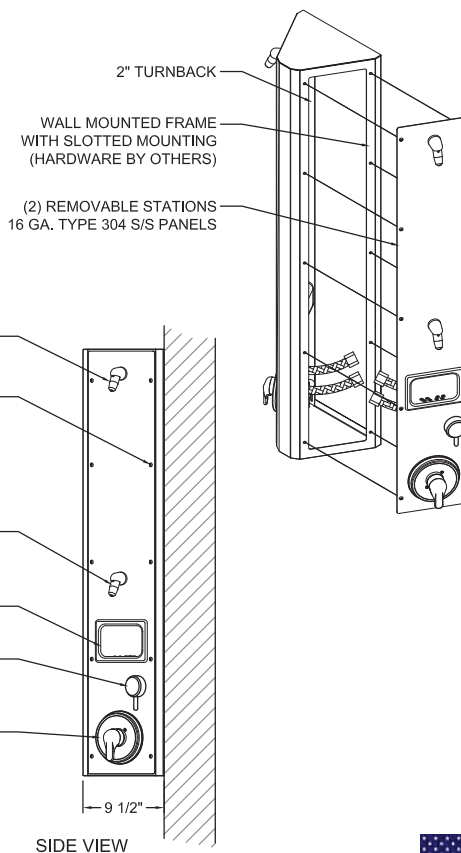
\*(Req. 110V power through ground fault interrupter (GFCI) receptacle)

Approved For Manufacturing By: \_\_\_\_\_ Date: \_\_\_\_\_ Company: \_\_\_\_\_  
 Wall Thickness: \_\_\_\_\_ Wall Type: \_\_\_\_\_

**VERIFY ALL DIMENSIONS WITH FACTORY PRIOR TO ROUGH-IN**  
 WILLOUGHBY RESERVES THE RIGHT TO MAKE CHANGES IN DESIGN AND DIMENSIONS WITHOUT FORMAL NOTICE AND WITHOUT INCURRING OBLIGATION.



- (APS) ADJUSTABLE VANDAL RESISTANT SHOWER HEAD  
 1/4"-20 x 3/4" S/S SECURITY SCREWS SECURE PANELS TO FRAME W/ NUTS (INCLUDED)  
 (8) 1" x 1/4" WALL MOUNTING SLOTS  
 (APS) ADJUSTABLE VANDAL RESISTANT SHOWER HEAD  
 (RD) RECESSED SOAP DISH  
 (DV) DIVERTER VALVE  
 HANDICAP ACCESSIBLE STATION  
 (TPV) TEMP./PRESSURE-BALANCING MIXING VALVE



visit our website at [www.willoughby-ind.com](http://www.willoughby-ind.com)  
 5105 West 78th Street • Indianapolis, IN. 46268  
 (317) 875-0830 • Fax: (317) 875-0837 • (800) 428-4065



MADE IN THE U.S.A.