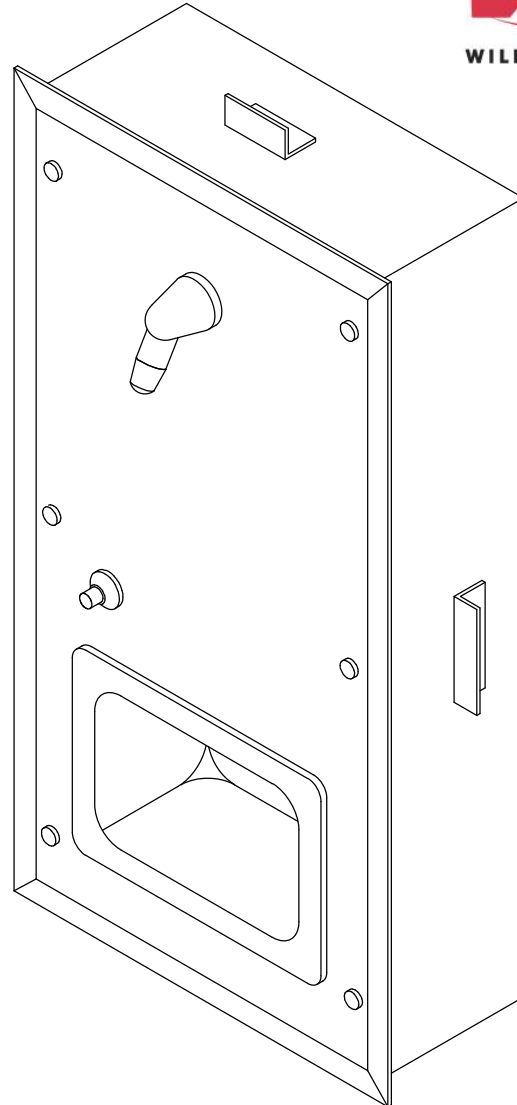


CWRS-FA Series Front Mounted Recessed Shower Panel



Recommended Specifications

Front Mounted, Recessed Shower Panel shall be:
Willoughby Model No. **CWRS-FA**
(Select from model number and options list on next page)

Shower panel shall be fabricated from 16 gauge, Type 304 stainless steel with exposed stainless surfaces polished to a #4 satin finish. In-wall mounting frame shall be fabricated from 18 gauge galvanized steel.

Standard equipment shall include:

- Shower valves (from Valve Selection options list)
- Shower head (from Shower Head Selection options list)
- In-wall mounting frame

Shower panel shall attach to in-wall mounting frame with vandal resistant stainless steel screws. Shower unit shall be factory assembled, tested for proper operation, and ready for installation by a contractor. Unit requires no chase area for installation and maintenance.

(Unit may be shown with optional features)

To specify fixture and accessories, use the Model Number and Options page.

Example: To specify a Front Mounted, Recessed Shower Panel with single temp. pneumatic metering valve, pneumatic push button, standard 2.5 GPM flow rate, APS adjustable vandal-resistant shower head, inline thermostatic mixing valve, and recessed soap dish

Use the following Willoughby Model Number:

CWRS-FA-PML1-PPB-2.5-APS-TMV-RD

MODEL NUMBER AND OPTIONS:

1.) Base Model Number:

- CWRS-FA Front Mounted, Recessed Shower Panel

5.) Electronic Control* (Must Use Electronic Push Button):

- WUSC-2200 WUSC-2400 Pneutronic

2.) Valve Selection:

- NV No Valve
- PML1 Single Temp. Pneumatic Metering
- PML2 Dual Temp. Pneumatic Metering
- E1L1 Single Temp. Electronic (w/ Pneutronic Control)*
- E1L2 Dual Temp. Electronic (w/ Pneutronic Control)*
- PBV Pressure-Balancing Mixing Valve
- TPV Temperature/Pressure-Balancing Mixing Valve
- TPLR Ligature-resistant Temperature/Pressure-Balancing Mixing Valve
- SVC Single Temp. Compression Valve
- DVC Dual Temp. Compression Valves

6.) Shower Head Selection:

- APS Adjustable Vandal-resistant Shower Head
- NPS Non-Adjustable Vandal-resistant Shower Head
- UBJ Universal Ball Joint Shower Head
- LBJ Lockable Ball Joint Shower Head
- CSH Ligature-resistant Shower Head
- FX Hand-held Flexshower Head (w/ quick disconnect, vacuum breaker, and (1) hook)

3.) Push Button Selection:

Pneumatic or Electronic Valves Only:

- PPB Pneumatic Push Buttons
- PBH Ligature-resistant Pneumatic Push Buttons
- EPB Electronic Push Buttons*
- EPBH Ligature-resistant Electronic Push Buttons*
- PZPB Piezo Electronic Push Buttons*

7.) Other Options:

- TF24H Hard-wired Transformer, 110VAC to 24VAC* (Standard)
- TF24P Plug-in Transformer, 110VAC to 24VAC*
- TMV Inline Thermostatic Mixing Valve
- SLB24 24" Adjustable Slide Bar (for Flexshower, Wall Mounted)
- SD Surface Mounted Soap Dish
- RD Recessed Mounted Soap Dish
- GB Grab Bar (Wall Mounted, Specify Dimensions):

- Other _____
- Other _____

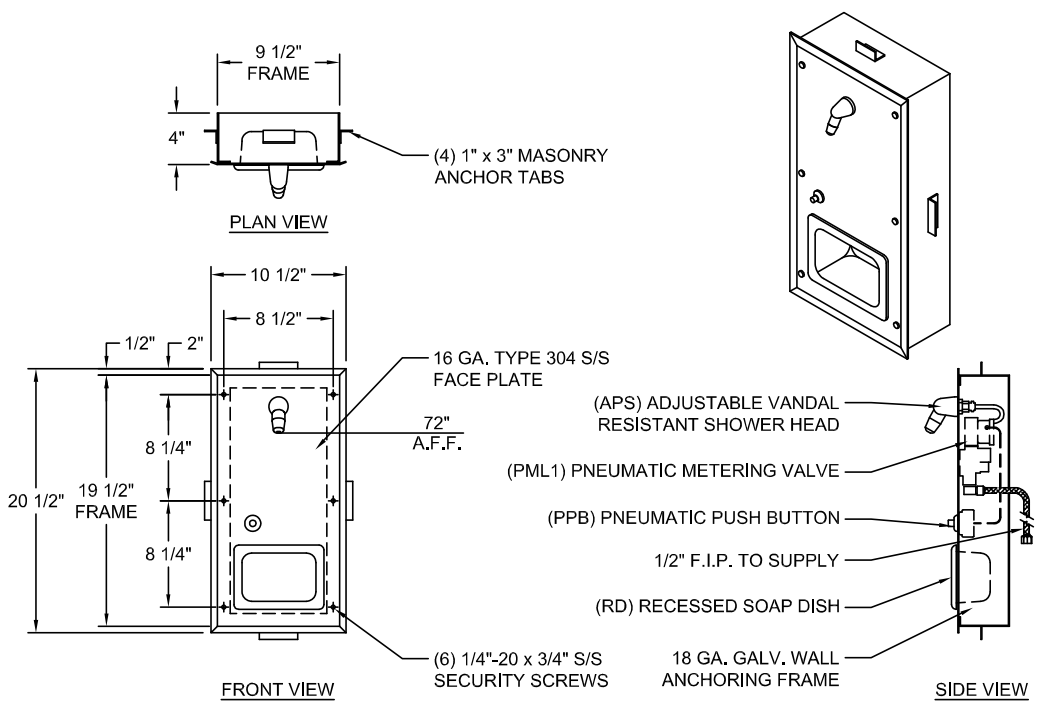
*(Req. 110V power through ground fault interrupter (GFCI) receptacle)

4.) Flow Rates:

- 2.5 GPM (Standard) 2.0 GPM 1.5 GPM

Approved For Manufacturing By: _____ Date: _____ Company: _____
 Wall Thickness: _____ Wall Type: _____

VERIFY ALL DIMENSIONS WITH FACTORY PRIOR TO ROUGH-IN
 WILLOUGHBY RESERVES THE RIGHT TO MAKE CHANGES IN DESIGN AND DIMENSIONS WITHOUT FORMAL NOTICE AND WITHOUT INCURRING OBLIGATION.



visit our website at www.willoughby-ind.com
 5105 West 78th Street • Indianapolis, IN. 46268
 (317) 875-0830 • Fax: (317) 875-0837 • (800) 428-4065



MADE IN THE U.S.A.