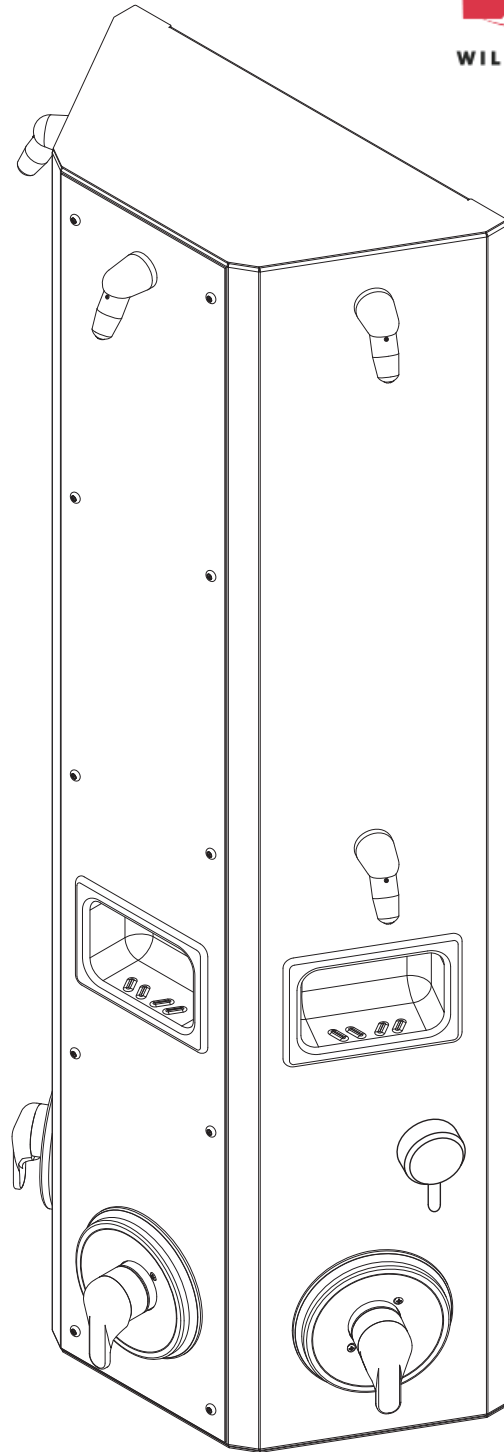


## CWTS-HCA Series Handicap Accessible Three Station Surface Mounted Wall Shower



### Recommended Specifications

Handicap Accessible, Three Station, Surface Mounted Wall Shower shall be: Willoughby Model No. **CWTS-HCA**  
(Select from model number and options list on next page)

Shower cabinet shall be fabricated from 16 gauge, Type 304 stainless steel with exposed stainless surfaces polished to a #4 satin finish. Wall bracket shall be fabricated from 16 gauge, Type 304 stainless steel.

Standard equipment shall include:

- Shower valves (from Valve Selection options list)
- Shower head (from Shower Head Selection options list)
- Mounting bracket

Shower face plate shall attach to mounting bracket with vandal resistant stainless steel security screws. Mounting bracket anchoring hardware by others. Unit requires no chase area for installation and maintenance.

#### Handicap Accessible:

The CWTS-HCA surface mounted shower will conform to most, but not all, ADA requirements.

(Compliance shall be subject to the requirements of the local code authority based on installation-specific details and is the responsibility of the installer.)

**RIGHT HAND HCA STATION SHOWN**  
**(Unit may be shown with optional features)**

To specify fixture and accessories, use the Model Number and Options page.

Example: To specify a Handicap Accessible, Three Station, Surface Mounted Wall Shower with right hand HCA shower station, temp./pressure-balancing mixing valve, diverter valve, 2.5 GPM flow rate, (2) APS adjustable vandal-resistant shower heads, and recessed soap dish

Use the following Willoughby Model Number:

**CWTS-HCA-R-TPV-DV-2.5-APS-2HD-RD**

visit our website at [www.willoughby-ind.com](http://www.willoughby-ind.com)  
5105 West 78th Street • Indianapolis, IN. 46268  
(317) 875-0830 • Fax: (317) 875-0837 • (800) 428-4065



MADE IN THE U.S.A.

# MODEL NUMBER AND OPTIONS:

## 1.) Base Model Number:

- CWTS-HCA-R Handicap Accessible, Three Station, Surface Mounted Wall Shower, Right Hand HCA Shower Station
- CWTS-HCA-L Handicap Accessible, Three Station, Surface Mounted Wall Shower, Left Hand HCA Shower Station

## 2.) Valve Selection:

- NV No Valve
- PML1 Single Temp. Pneumatic Metering
- PML2 Dual Temp. Pneumatic Metering
- E1L1 Single Temp. Electronic (w/ Pneutronic Control)\*
- E1L2 Dual Temp. Electronic (w/ Pneutronic Control)\*
- PBV Pressure-Balancing Mixing Valve
- TPV Temperature/Pressure-Balancing Mixing Valve
- TPLR Ligature-resistant Temp/Pressure-balancing Mixing Valve
- SVC Single Temp. Compression Valve
- DVC Dual Temp. Compression Valves

## 3.) Diverter Valve:

- DV Diverter Valve
- DVLR Ligature-resistant Diverter Valve
- PML1-MA2 Two Single Temp. Pneumatic Metering Valves (Used to divert water flow to either upper, lower, or both shower heads; for use with Mixing Valve options above)

## 4.) Push Button Selection:

*Pneumatic or Electronic Valves Only:*

- PPB Pneumatic Push Buttons
- PBH Ligature-resistant Push Buttons
- EPB Electronic Push Buttons\*
- EPBH Ligature-resistant Electronic Push Buttons\*
- PZPB Piezo Electronic Push Buttons\*

## 5.) Flow Rates:

- 2.5 GPM (Standard)
- 2.0 GPM
- 1.5 GPM

## 6.) Electronic Control\* (Must Use Electronic Push Button):

- WUSC-2200
- WUSC-2400
- Pneutronic

## 7.) Shower Head Selection:

- APS Adjustable Vandal-resistant Shower Head
- NPS Non-Adjustable Vandal-resistant Shower Head
- UBJ Universal Ball Joint Shower Head
- LBJ Lockable Ball Joint Shower Head
- CSH Ligature-resistant Shower Head
- FX Hand-held Flexshower Head (w/ quick disconnect, vacuum breaker, and (1) hook)
- 2HD Dual Fixed Shower Heads (replaces (FX) Flexshower head w/ second of the selected fixed Shower Head)

## 8.) Other Options:

- TF24H Hard-wired Transformer, 110VAC to 24VAC\* (Standard)
- TF24P Plug-in Transformer, 110VAC to 24VAC\*
- TMV Inline Thermostatic Mixing Valve
- HL Hi-Lo (2 Hooks For Flexshower)
- SLB24 24" Adjustable Slide Bar (for Flexshower, Wall Mounted)
- SD Surface Mounted Soap Dish
- RD Recessed Mounted Soap Dish
- GB Grab Bar (Wall Mounted, Specify Dimensions):

- PS Pipe Shroud (Specify Length): \_\_\_\_\_

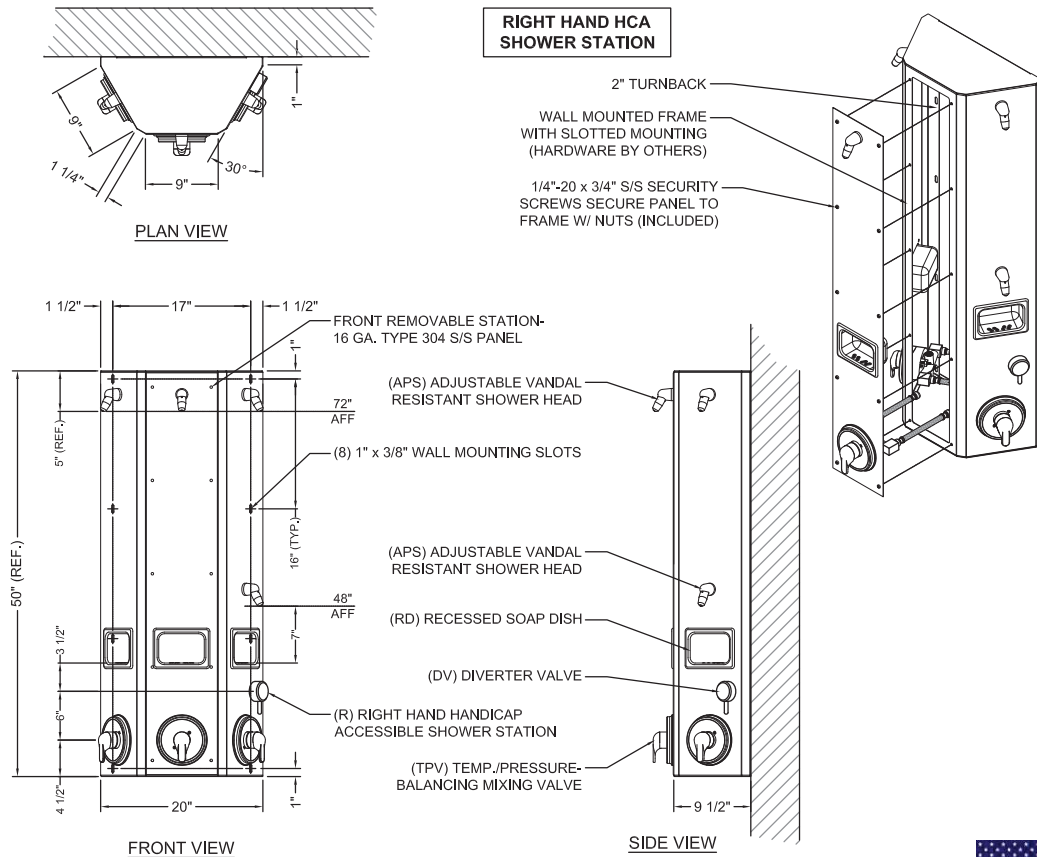
- Other \_\_\_\_\_

\*(Req. 110V power through ground fault interrupter (GFCI) receptacle)

Approved For Manufacturing By: \_\_\_\_\_ Date: \_\_\_\_\_ Company: \_\_\_\_\_

Wall Thickness: \_\_\_\_\_ Wall Type: \_\_\_\_\_

**VERIFY ALL DIMENSIONS WITH FACTORY PRIOR TO ROUGH-IN**  
 WILLOUGHBY RESERVES THE RIGHT TO MAKE CHANGES IN DESIGN AND DIMENSIONS WITHOUT FORMAL NOTICE AND WITHOUT INCURRING OBLIGATION.



visit our website at [www.willoughby-ind.com](http://www.willoughby-ind.com)

5105 West 78th Street • Indianapolis, IN. 46268

(317) 875-0830 • Fax: (317) 875-0837 • (800) 428-4065



MADE IN THE U.S.A.