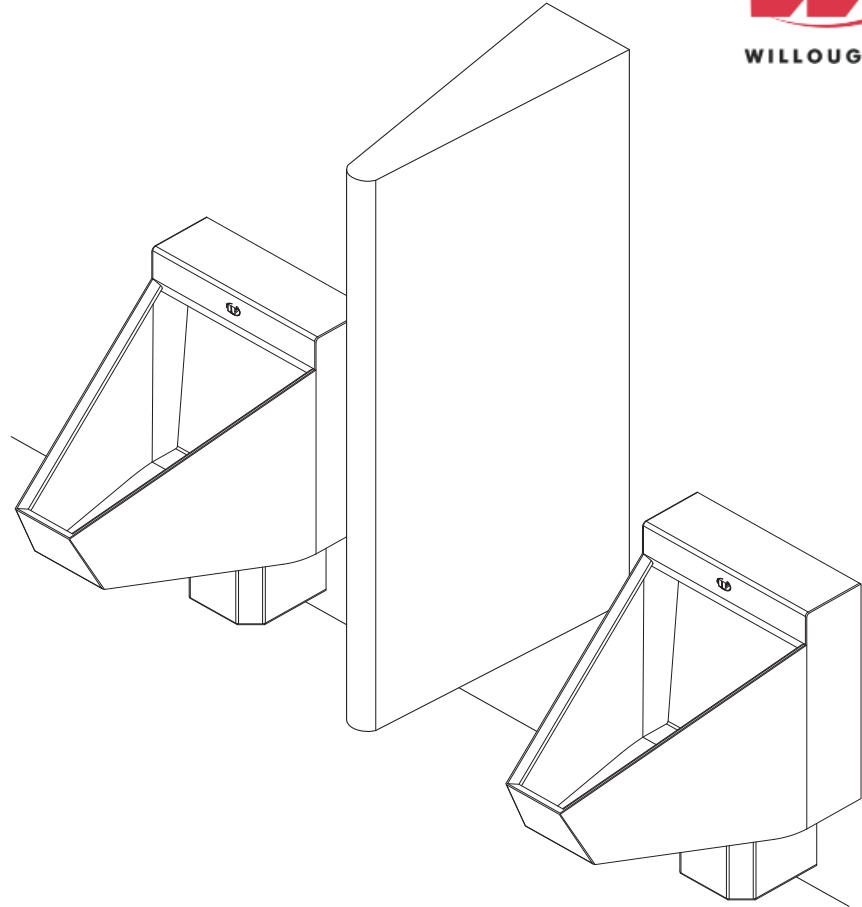


URS-1836 Urinal Screen



(Unit may be shown with optional features. Urinals not included)

To specify fixture and accessories, use the Model Number and Options page.

Example: To specify a Urinal Screen

Use the following Willoughby Model Number:

URS-1836

Recommended Specifications

Urinal Screen shall be:
Willoughby Model No. **URS-1836**
(Select from model number and options list on next page)

Screen is fabricated from 14 GA., Type 304 stainless steel. The construction shall be all-welded with exposed stainless surfaces polished to a #4 satin finish.

Screen interior shall be sound deadened with fire resistant material.

Anchoring shall be by standard 6 point system: threaded rods, nuts and washers furnished for walls up to 8" thick.

Screen requires chase area for installation.

visit our website at www.willoughby-ind.com
5105 West 78th Street • Indianapolis, IN. 46268
(317) 875-0830 • Fax: (317) 875-0837 • (800) 428-4065



MADE IN THE U.S.A.

MODEL NUMBER AND OPTIONS:

1.) Base Model Number:

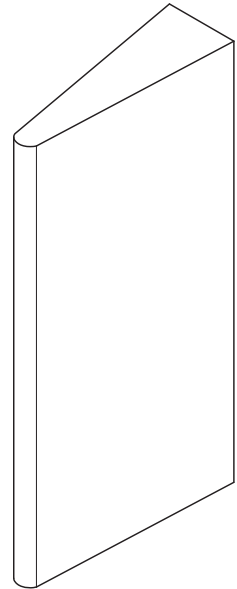
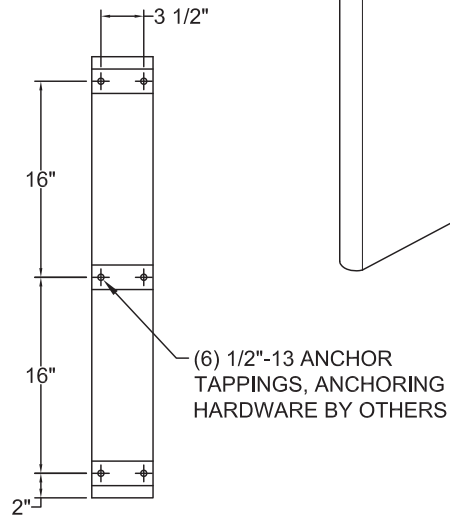
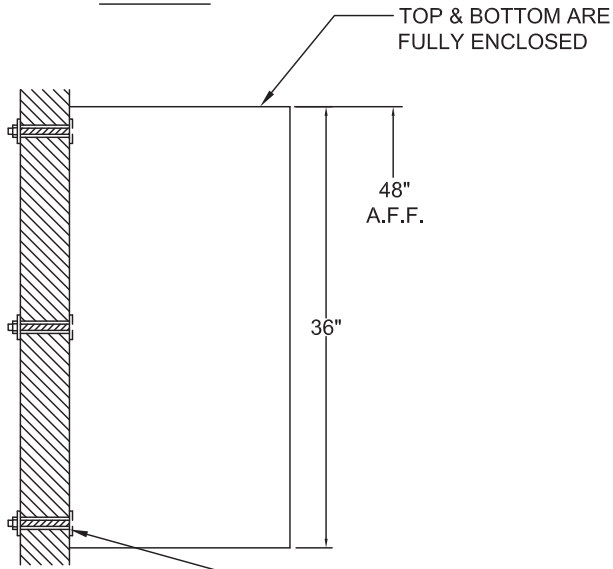
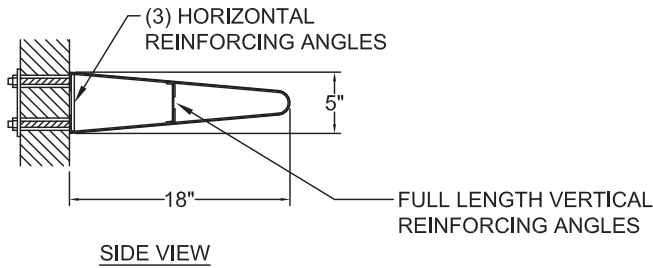
URS-1836 Urinal Screen

2.) Options:

- FA Front Mounted (Does not require chase)
- Other _____
- Other _____

Approved For Manufacturing By: _____ Date: _____ Company: _____
 Wall Thickness: _____ Wall Type: _____

VERIFY ALL DIMENSIONS WITH FACTORY PRIOR TO ROUGH-IN
 WILLOUGHBY RESERVES THE RIGHT TO MAKE CHANGES IN DESIGN AND DIMENSIONS WITHOUT FORMAL NOTICE AND WITHOUT INCURRING OBLIGATION.



SIDE VIEW

REAR VIEW

visit our website at www.willoughby-ind.com
 5105 West 78th Street • Indianapolis, IN. 46268
 (317) 875-0830 • Fax: (317) 875-0837 • (800) 428-4065



MADE IN THE U.S.A.