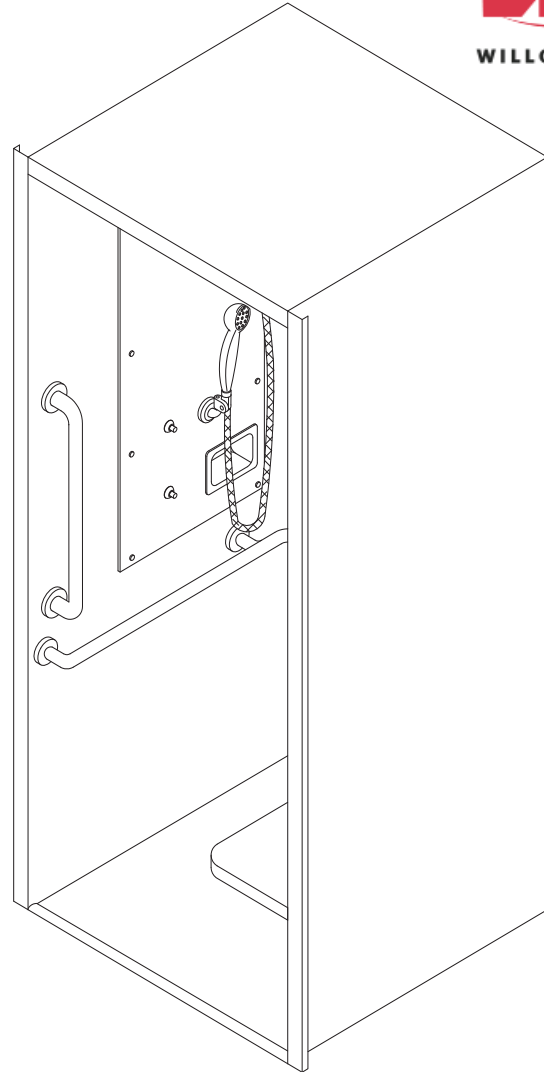


Front Access Handicap Cabinet Shower



**Please provide shower finish schedule upon ordering.
(Unit may be shown with optional features)**

Recommended Specifications

Front Access Handicap Cabinet Shower shall be:
Willoughby Model No. **S- 3636-HC-FA**
(Select from model number and options list on next page)

Shower cabinet shall be fabricated from 14 gauge, Type 304 stainless steel. Shower floor shall be fabricated from 11 gauge, Type 304 stainless steel. The construction shall be **all-welded** (unitized models only, not applicable to knockdown models), exposed stainless surfaces polished to a #4 satin finish, except shower floor which shall have a non-slip glass blast finish.

Standard equipment shall include:

- (ICD) Inside caulk drain (2") with removable strainer
- (GB3318) 18" x 33" Horizontally-mounted L-shaped grab bar
- (GB24V) 24" Vertically-mounted grab bar
- (FSS) Fold-up stainless steel shower seat

Unit requires no chase area for installation and maintenance. Shower valve and shower head shall be mounted on removable access panel secured with security screws.

Underside of shower floor shall be sound deadened with fire resistant material.

To specify fixture and accessories, use the Model Number and Options page.

Example: To specify a unitized 36" x 36" Front Access Handicap Cabinet Shower with left hand shower head/push button/valving, polished front, single temp. pneumatic metering valves, standard pneumatic push buttons, 2.5 GPM flow rate, non-adjustable penel shower head and hand held Flex-shower, standard inside caulk drain, and recessed mounted soap dish

Use the following Willoughby Model Number:

US-3636-HC-FA-L-B3-PML1-MA2-PPB-2.5GPM-NPS-FX-ICD-RD

Unit requires 2" recess in floor.

Fixture shall be free-standing, no anchoring required.

To specify Knockdown Cabinet Shower: Select the "KS" model number from the list on the Model Number and Options page.



MODEL NUMBER AND OPTIONS:

1.) Base Model Number:

Unitized Handicap Front Access Cabinet Shower:

- US-3636-HC-FA 36"L x 36"W Cabinet Shower **Knockdown Handicap Front Access Cabinet Shower:**
- KS-3636-HC-FA 36"L x 36"W Cabinet Shower

2.) Shower Head/ Push Button/ Valve Orientation:

- L Left Hand
- R Right Hand

3.) Cabinet Side Exterior Finish Schedule:

(Based on Chase Wall Orientation; see the Options Pages at the end of Catalog Section for diagram)

For (LCS) Left Wall:

- B2 Polished Front & Right Side
- B3 Polished Front only

For (RCS) Right Wall:

- C2 Polished Front & Left Side
- C3 Polished Front only

4.) Valve Selection:

- NV No Valve
- PML1 Single Temp. Pneumatic Metering
- PML2 Dual Temp. Pneumatic Metering
- E1L1 Single Temp. Electronic (Pick Control)*
- E1L2 Dual Temp. Electronic (Pick Control)*
- PBV Pressure-Balancing Mixing Valve
- TPV Temp/Pressure-Balancing Mixing Valve
- TPLR Ligature-resistant Temp/Pressure-Balancing Mixing Valve

Valve Manifold Option:

Pneumatic or Electronic Valves Only: (See the Manifold Option Page at the end of Catalog Section S5 for further information)

- MA2

5.) Diverter Valve:

- DV Diverter Valve
- DVLR Ligature-resistant Diverter Valve
- PML1-MA2 Two Single Temp. Pneumatic Metering Valves in Lieu of Diverter Valve

6.) Push Button Selection:

- Pneumatic or Electronic Valves Only:*
- PPB Pneumatic Push Buttons
 - PBH Ligature-resistant Push Buttons
 - EPB Electronic Push Buttons*
 - EPBH Ligature-resistant Electronic Push Buttons*
 - PZPB Piezo Push Buttons*

7.) Flow Rates:

- 2.5 GPM (Standard)
- 2.0 GPM
- 1.5 GPM

8.) Electronic Controls*

- (Must Use Electronic Push Button):**
- WUSC-2200 WUSC-2400
 - Pneutronic WMS II

9.) Shower Head Selection:

- NPS Non-adjustable Penal Shower Head
- FX Hand Held Flexshower w/ Quick Disconnect and Vacuum Breaker
- APS Adjustable Penal Shower Head
- CSH Ligature-resistant Shower Head
- 2HD (2) Fixed Shower Heads, Replaces (FX)

10.) Drain Selection:

- ICD Inside Caulk Cabinet Shower Drain (2") (Standard)

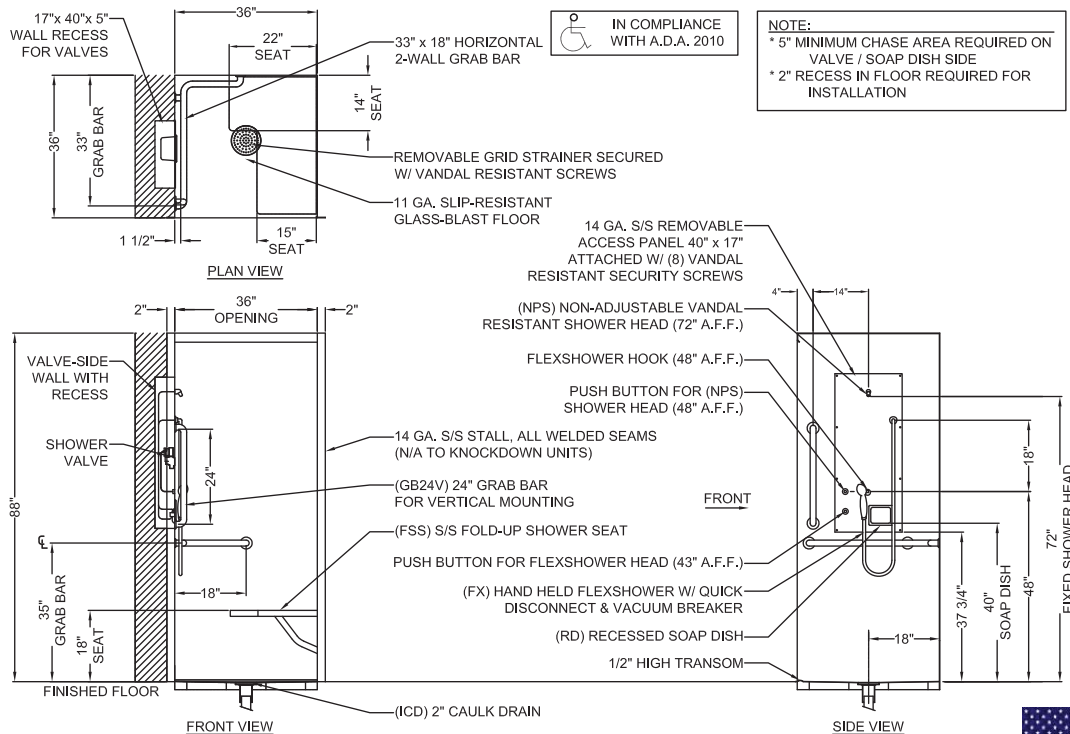
11.) Options:

- VG Ventilation Grille (Specify Free Area and Location; Standard Grille Dimensions: 8-3/4" x 8-3/4" with 15-3/4 in² open area)
- CP Closure Panels (Specify Dimensions and Locations)
- STC Sloping Top Closure
- MD_ Modesty Door (Not ADA-Compliant)
 - L Hinged Left
 - R Hinged Right
- CR Curtain Rod
- TH1 Release Towel Hook
- GBC Grab Bar Closure Plate
- RD Recessed Mounted Soap Dish (Standard)
- SD Surface Mounted Soap Dish
- TA Threshold Anchors
- TMV In-line Thermostatic Mixing Valve
- TF24H Hard-wired Transformer, 110VAC to 24VAC*
- TF24P Plug-in Transformer, 110VAC to 24VAC*
- LFSS Less Fold-up Stainless Steel Shower Seat (NOTE: FSS Fold-up Shower Seat is required for ADA Compliance)
- LGB3318 Less 18" x 33" Horizontally-mounted L-Shaped Grab Bar
- LGB24V Less 24" Vertically-mounted Grab Bar
- Other _____
- Other _____

*(Req. 110V power through ground fault interrupter (GFCI) receptacle)

Approved For Manufacturing By: _____ Date: _____ Company: _____
 Wall Thickness: _____ Wall Type: _____

VERIFY ALL DIMENSIONS WITH FACTORY PRIOR TO ROUGH-IN
 WILLOUGHBY RESERVES THE RIGHT TO MAKE CHANGES IN DESIGN AND DIMENSIONS WITHOUT FORMAL NOTICE AND WITHOUT INCURRING OBLIGATION.



IN COMPLIANCE WITH A.D.A., 2010

NOTE:
 * 5" MINIMUM CHASE AREA REQUIRED ON VALVE / SOAP DISH SIDE
 * 2" RECESS IN FLOOR REQUIRED FOR INSTALLATION

visit our website at www.willoughby-ind.com
 5105 West 78th Street • Indianapolis, IN. 46268
 (317) 875-0830 • Fax: (317) 875-0837 • (800) 428-4065



MADE IN THE U.S.A.