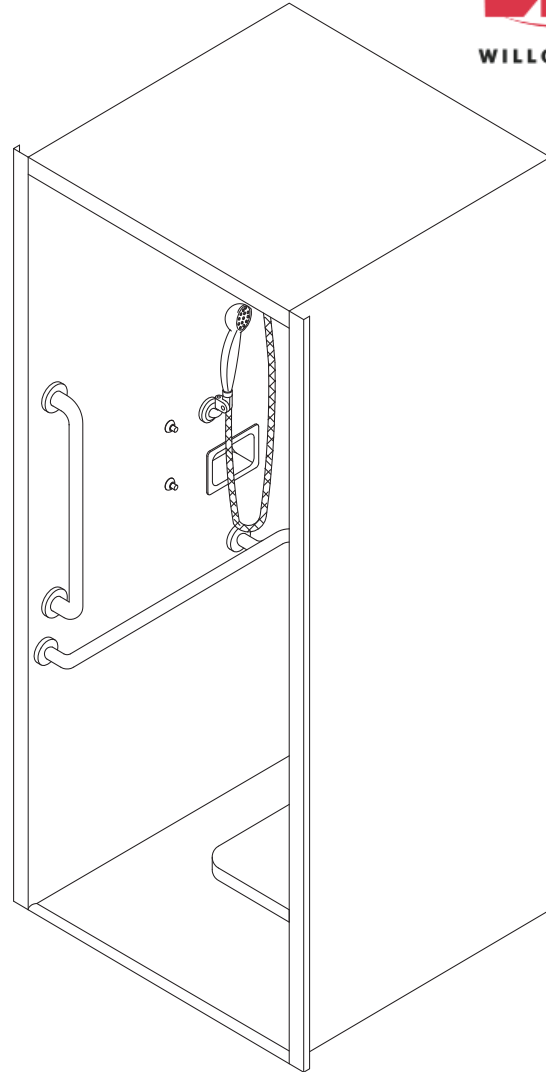


## Handicap Cabinet Shower



### Recommended Specifications

Handicap Cabinet Shower shall be:  
Willoughby Model No. **\_\_\_S- 3636-HC**  
(Select from model number and options list on next page)

Shower cabinet shall be fabricated from 14 gauge, Type 304 stainless steel. Shower floor shall be fabricated from 11 gauge, Type 304 stainless steel. The construction shall be **all-welded** (unitized models only, not applicable to knockdown models), exposed stainless surfaces polished to a #4 satin finish, except shower floor which shall have a non-slip glass blast finish.

- Standard equipment shall include:
- (ICD) Inside caulk drain (2") with removable strainer
  - (GB3318) 18" x 33" Horizontally-mounted L-shaped grab bar
  - (GB24V) 24" Vertically-mounted grab bar
  - (FSS) Fold-up stainless steel shower seat

Underside of shower floor shall be sound deadened with fire resistant material.

Unit requires chase area for installation and maintenance.

**Please provide shower finish schedule upon ordering.**  
***(Unit may be shown with optional features)***

To specify fixture and accessories, use the Model Number and Options page.

Example: To specify a unitized 36" x 36" Handicap Cabinet Shower with left hand chase /shower head/valving, polished front, single temp. pneumatic metering valves, standard pneumatic push buttons, 2.5 GPM flow rate, non-adjustable penel shower head and hand held Flexshower, standard inside caulk drain, and recessed mounted soap dish.

Use the following Willoughby Model Number:  
**US-3636-HC-L-B3-PML1-MA2-PPB-2.5GPM-NPS-FX-ICD-RD**

**Unit requires 2" recess in floor.**

Fixture shall be free-standing, no anchoring required.

**To specify Knockdown Cabinet Shower:** Select the "KS" model number from the list on the Model Number and Options page.



# MODEL NUMBER AND OPTIONS:

## 1.) Base Model Number:

- Unitized Handicap Cabinet Shower:**  
 US-3636-HC 36"L x 36"W Cabinet Shower  
**Knockdown Handicap Cabinet Shower:**  
 KS-3636-HC 36"L x 36"W Cabinet Shower

## 2.) Chase Wall/ Shower Head/Valve Orientation:

- L Left Hand (LCS- Left Chase)  
 R Right Hand (RCS- Right Chase)

## 3.) Cabinet Side Exterior Finish Schedule:

*(Based on Chase Wall Orientation; see the Options Pages at the end of Catalog Section for diagram)*

### For (LCS) Left Chase:

- B2 Polished Front & Right Side  
 B3 Polished Front only

### For (RCS) Right Chase:

- C2 Polished Front & Left Side  
 C3 Polished Front only

## 4.) Valve Selection:

- NV No Valve  
 PML1 Single Temp. Pneumatic Metering  
 PML2 Dual Temp. Pneumatic Metering  
 E1L1 Single Temp. Electronic (Pick Control)\*  
 E1L2 Dual Temp. Electronic (Pick Control)\*  
 PBV Pressure-Balancing Mixing Valve  
 TPV Temp/Pressure-Balancing Mixing Valve  
 TPLR Ligature-resistant Temp/Pressure-Balancing Mixing Valve

### Valve Manifold Option:

*Pneumatic or Electronic Valves Only:*

*(See the Manifold Option Page at the end of Catalog Section S5 for further information)*

- MA2

## 5.) Diverter Valve:

- DV Diverter Valve  
 DVLR Ligature-resistant Diverter Valve  
 PML1-MA2 Two Single Temp. Pneumatic Metering Valves in Lieu of Diverter Valve

## 6.) Push Button Selection:

*Pneumatic or Electronic Valves Only:*

- PPB Pneumatic Push Buttons  
 PBH Ligature-resistant Push Buttons  
 EPB Electronic Push Buttons\*  
 EPBH Ligature-resistant Electronic Push Buttons\*  
 PZPB Piezo Push Buttons\*

## 7.) Flow Rates:

- 2.5 GPM (Standard)  
 2.0 GPM  
 1.5 GPM

## 8.) Electronic Controls\*

**(Must Use Electronic Push Button):**

- WUSC-2200  WUSC-2400  
 Pneutronic  WMS II

## 9.) Shower Head Selection:

- NPS Non-adjustable Penal Shower Head  
 FX Hand Held Flexshower w/ Quick Disconnect and Vacuum Breaker  
 APS Adjustable Penal Shower Head  
 CSH Ligature-resistant Shower Head  
 2HD (2) Fixed Shower Heads, Replaces (FX)

## 10.) Drain Selection:

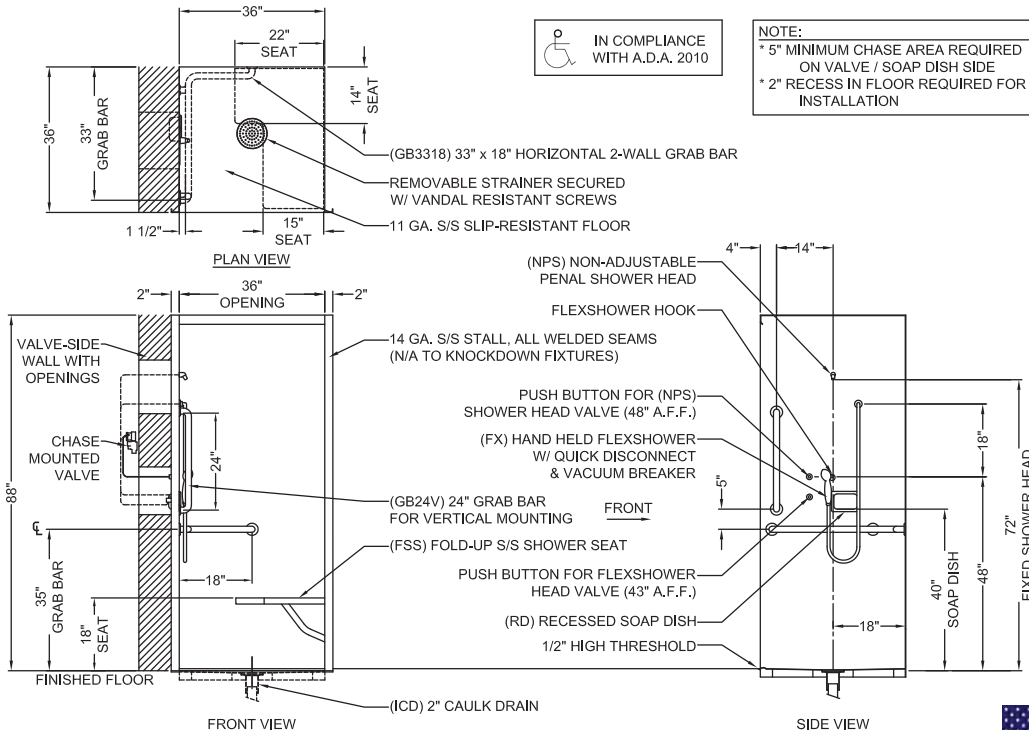
- ICD Inside Caulk Cabinet Shower Drain (2") (Standard)

## 10.) Options:

- VG Ventilation Grille (Specify Free Area and Location; Standard Grille Dimensions: 8-3/4" x 8-3/4" with 15-3/4 in<sup>2</sup> open area)  
 CP Closure Panels (Specify Dimensions and Locations)  
 STC Sloping Top Closure  
 MD Modesty Door (Not ADA-Compliant)  
 L Hinged Left  
 R Hinged Right  
 CR Curtain Rod  
 TH1 Release Towel Hook  
 GBC Grab Bar Closure Plate  
 RD Recessed Mounted Soap Dish  
 SD Surface Mounted Soap Dish  
 TA Threshold Anchors  
 TMV In-line Thermostatic Mixing Valve  
 TF24H Hard-wired Transformer, 110VAC to 24VAC\*  
 TF24P Plug-in Transformer, 110VAC to 24VAC\*  
 LFSS Less Fold-up Stainless Steel Shower Seat (NOTE: FSS Fold-up Shower Seat is required for ADA Compliance)  
 LGB3318 Less 18" x 33" Horizontally-mounted L-Shaped Grab Bar  
 LGB24V Less 24" Vertically-mounted Grab Bar  
 Other \_\_\_\_\_  
 Other \_\_\_\_\_  
 \*(Req. 110V power through ground fault interrupter (GFCI) receptacle)

Approved For Manufacturing By: \_\_\_\_\_ Date: \_\_\_\_\_ Company: \_\_\_\_\_  
 Wall Thickness: \_\_\_\_\_ Wall Type: \_\_\_\_\_

**VERIFY ALL DIMENSIONS WITH FACTORY PRIOR TO ROUGH-IN**  
 WILLOUGHBY RESERVES THE RIGHT TO MAKE CHANGES IN DESIGN AND DIMENSIONS WITHOUT FORMAL NOTICE AND WITHOUT INCURRING OBLIGATION.



IN COMPLIANCE WITH A.D.A. 2010

NOTE:  
 \* 5" MINIMUM CHASE AREA REQUIRED ON VALVE / SOAP DISH SIDE  
 \* 2" RECESS IN FLOOR REQUIRED FOR INSTALLATION

visit our website at [www.willoughby-ind.com](http://www.willoughby-ind.com)  
 5105 West 78th Street • Indianapolis, IN. 46268  
 (317) 875-0830 • Fax: (317) 875-0837 • (800) 428-4065



MADE IN THE U.S.A.