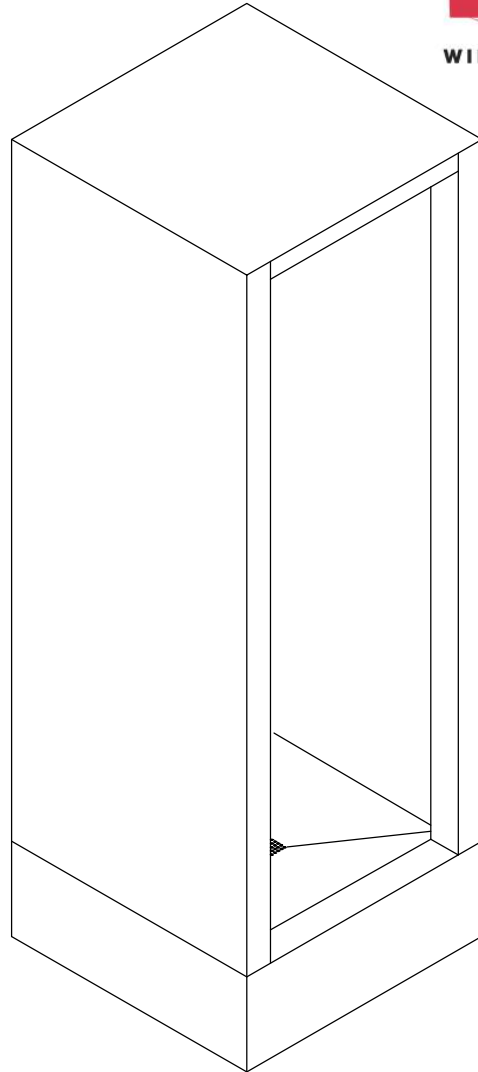


## Cabinet Shower



**Please provide shower finish schedule upon ordering.**  
**(Unit may be shown with optional features)**

### Recommended Specifications

Cabinet Shower shall be:  
Willoughby Model No.    S-     
(Select from model number and options list on next page)

Shower cabinet shall be fabricated from 14 gauge, Type 304 stainless steel. Shower floor shall be fabricated from 11 gauge, Type 304 stainless steel. The construction shall be **all welded** (unitized models only, not applicable to knockdown models), exposed stainless surfaces polished to a #4 satin finish, except shower floor which shall have a non-slip glass blast finish.

Standard equipment shall include:

- (NPS) non-adjustable penal shower head, mounted in front corner panel (plumbed through the side mullion, under shower floor, and to chase wall)
- (EBD) Integral strainer drain with elbow waste (2" F.I.P.) extending to chase wall

Unit requires chase area for installation and maintenance.

Underside of shower floor shall be sound deadened with fire resistant material.

To specify fixture and accessories, use the Model Number and Options page.

Example: To specify a unitized 36" x 36" Cabinet Shower with left hand shower head, back chase/valving, polished front, single temp. pneumatic metering valve, standard pneumatic push button, 2.5 GPM flow rate, standard non-adjustable penal shower head, standard elbow waste drain and recessed mounted soap dish

Use the following Willoughby Model Number:

**US-3636-L-BCS-A4-PML1-PPB-2.5GPM-NPS-EBD-RD**

**To specify Knockdown Cabinet Shower:** Select the "KS" model number from the list on the Model Number and Options page.

visit our website at [www.willoughby-ind.com](http://www.willoughby-ind.com)

5105 West 78th Street • Indianapolis, IN. 46268

(317) 875-0830 • Fax: (317) 875-0837 • (800) 428-4065



MADE IN THE U.S.A.

# MODEL NUMBER AND OPTIONS:

## 1.) Base Model Number:

- Unitized Cabinet Showers:**
- US-3030 30"L x 30"W Cabinet Shower
  - US-3232 32"L x 32"W Cabinet Shower
  - US-3636 36"L x 36"W Cabinet Shower
- Knockdown Cabinet Showers:**
- KS-3030 30"L x 30"W Cabinet Shower
  - KS-3232 32"L x 32"W Cabinet Shower
  - KS-3636 36"L x 36"W Cabinet Shower

## 2.) Shower Head Orientation:

- L Left Hand
- R Right Hand

## 3.) Chase Wall/Valve Orientation:

- BCS Back Chase
- LCS Left Chase
- RCS Right Chase

## 4.) Cabinet Side Exterior Finish Schedule:

*(Based on Chase Wall Orientation; see the Options Pages at the end of Catalog Section for diagram)*

### For (BCS) Back Chase:

- A1 Polished Front, Left Side, & Right Side
- A2 Polished Front & Right Side
- A3 Polished Front & Left Side
- A4 Polished Front only

### For (LCS) Left Chase:

- B1 Polished Front, Back Side, & Right Side
- B2 Polished Front & Right Side
- B3 Polished Front only

### For (RCS) Right Chase:

- C1 Polished Front, Back Side, & Left Side
- C2 Polished Front & Left Side
- C3 Polished Front only

## 5.) Valve Selection:

- NV No Valve
- PML1 Single Temp. Pneumatic Metering
- PML2 Dual Temp. Pneumatic Metering
- E1L1 Single Temp. Electronic (Pick Control)\*
- E1L2 Dual Temp. Electronic (Pick Control)\*
- PBV Pressure-Balancing Mixing Valve
- TPV Temp/Pressure-Balancing Mixing Valve
- TPLR Ligature-resistant Temp/Pressure-Balancing Mixing Valve

### Valve Manifold Option:

*Pneumatic or Electronic Valves Only:*

*(See the Manifold Option Page at the end of Catalog Section S5 for further information)*

- MA2

## 6.) Push Button Selection:

*Pneumatic or Electronic Valves Only:*

- PPB Pneumatic Push Buttons
- PBH Ligature-resistant Push Buttons
- EPB Electronic Push Buttons\*
- EPBH Ligature-resistant Electronic Push Buttons\*
- PZPB Piezo Push Buttons\*

## 7.) Flow Rates:

- 2.5 GPM (Standard)
- 2.0 GPM
- 1.5 GPM

## 8.) Electronic Controls\*

**(Must Use Electronic Push Button):**

- WUSC-2200  WUSC-2400
- Pneutronic  WMS II

## 9.) Shower Head Selection:

- NPS Non-adjustable Penal Shower Head (Standard)
- APS Adjustable Penal Shower Head
- CSH Ligature-resistant Shower Head

## 10.) Drain Selection:

- EBD Elbow waste for Cabinet Shower (2" FIP) (Standard)
- PTD Integral 'P'-Trap Cabinet Shower Drain (2" FIP)
- NHD No-hub Cabinet Shower Drain (2")
- ICD Inside Caulk Cabinet Shower Drain (2")

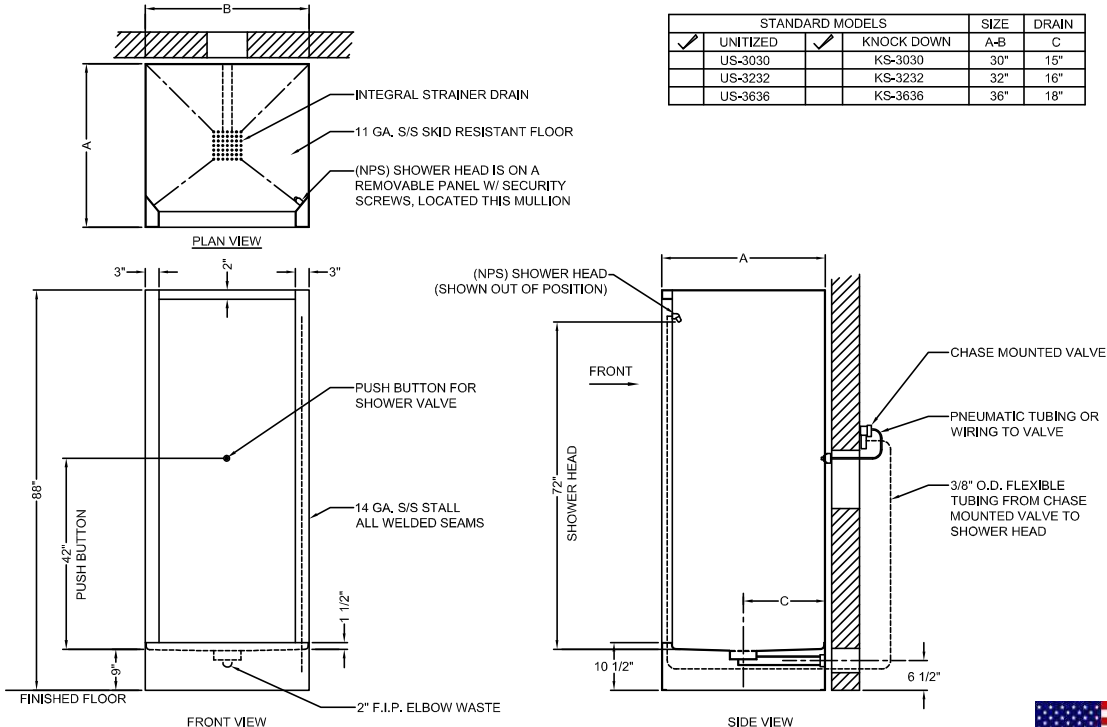
## 11.) Options:

- VG Ventilation Grille (Specify Free Area and Location; Standard Grille Dimensions: 8-3/4" x 8-3/4" with 15-3/4 in<sup>2</sup> open area)
- CP Closure Panels (Specify Dimensions and Locations)
- STC Sloping Top Closure
- MD Modesty Door (Not ADA-Compliant)
  - L Hinged Left
  - R Hinged Right
- CR Curtain Rod
- DR Drying Receptor
- TH1 Release Towel Hook
- RD Recessed Mounted Soap Dish
- SD Surface Mounted Soap Dish
- ZC 'Z'-Clip Floor Mounting
- TMV In-line Thermostatic Mixing Valve
- TF24H Hard-wired Transformer, 110VAC to 24VAC\*
- TF24P Plug-in Transformer, 110VAC to 24VAC\*
- Other \_\_\_\_\_
- Other \_\_\_\_\_

\*(Req. 110V power through ground fault interrupter (GFCI) receptacle)

Approved For Manufacturing By: \_\_\_\_\_ Date: \_\_\_\_\_ Company: \_\_\_\_\_  
 Wall Thickness: \_\_\_\_\_ Wall Type: \_\_\_\_\_

**VERIFY ALL DIMENSIONS WITH FACTORY PRIOR TO ROUGH-IN**  
 WILLOUGHBY RESERVES THE RIGHT TO MAKE CHANGES IN DESIGN AND DIMENSIONS WITHOUT FORMAL NOTICE AND WITHOUT INCURRING OBLIGATION.



STANDARD MODELS				SIZE	DRAIN
<input checked="" type="checkbox"/>	UNITIZED	<input checked="" type="checkbox"/>	KNOCK DOWN	A-B	C
<input type="checkbox"/>	US-3030	<input type="checkbox"/>	KS-3030	30"	15"
<input type="checkbox"/>	US-3232	<input type="checkbox"/>	KS-3232	32"	16"
<input type="checkbox"/>	US-3636	<input type="checkbox"/>	KS-3636	36"	18"

visit our website at [www.willoughby-ind.com](http://www.willoughby-ind.com)  
 5105 West 78th Street • Indianapolis, IN. 46268  
 (317) 875-0830 • Fax: (317) 875-0837 • (800) 428-4065



MADE IN THE U.S.A.